

Process ID. 80964
 Vol. 4618 fol 449
 R.P.O Vol. 42 Fol. 443
 C.T. Vol. 636 Fol. 317

1331

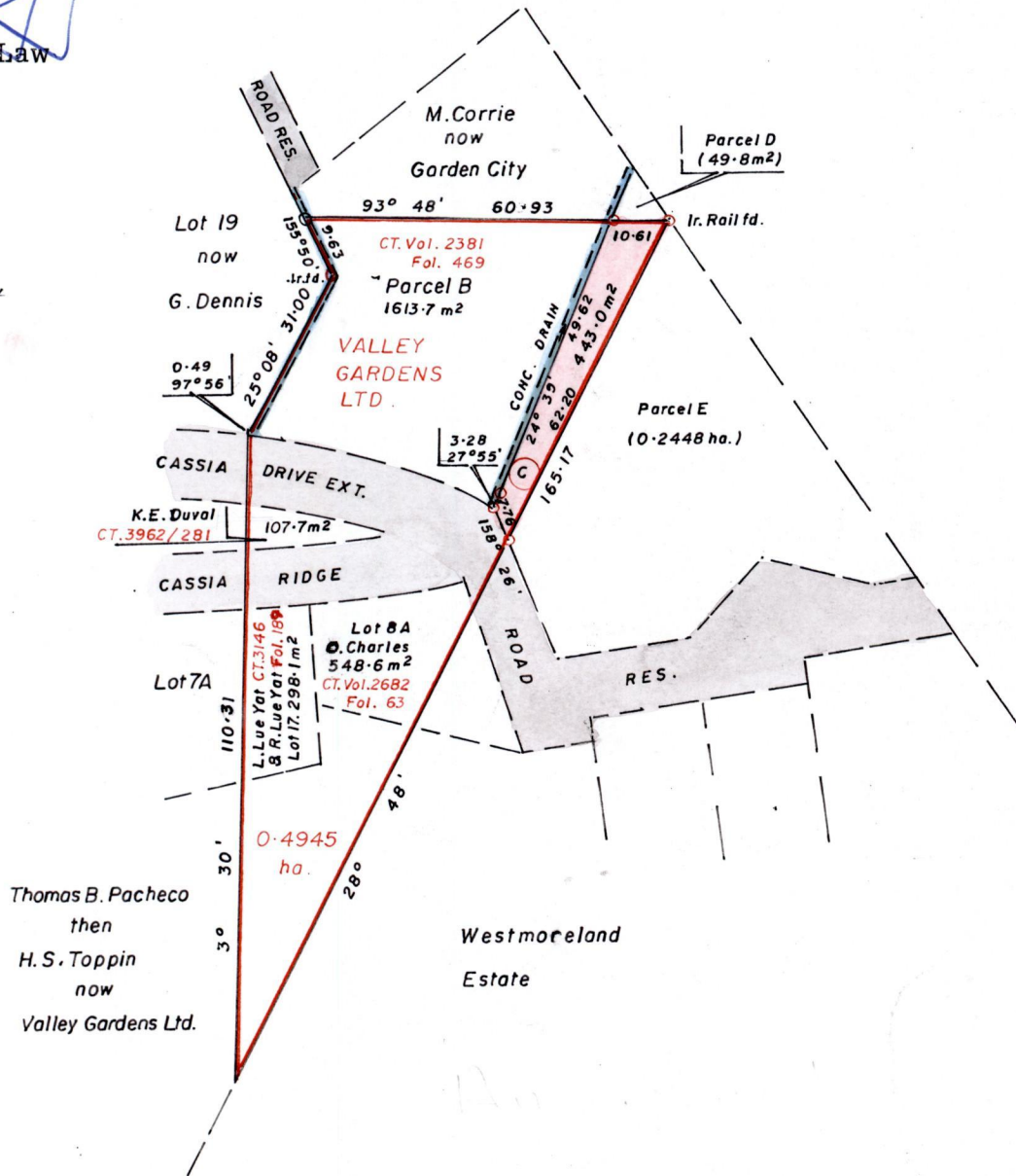
41

Cadastral Sheet A.14.L. 13A
 3/c
 Ward of Diego Martin
 County of St. George

"X"

This is the Plan marked "X" referred to in the annexed Memorandum of Transfer dated the 11th day of October 2004.

Attorney-at-Law



Approved
[Signature]
 Director of Surveys
 2004.9.15

Anex Investment to



NOTE: Parcels C and D to be amalgamated to Parcel E

Iron put at each corner except otherwise indicated

SCALE : 1 / 1250

Note: To obtain compass bearings subtract 3 minutes.

Distances are in metres

PLAN of a Parcel of land coloured pink in the Ward of Diego Martin
 Containing four hundred and forty three point zero square metres
 Surveyed by me with due authority in July 2000.

In accordance with Regulation 25(1) of the Land Surveyors' Regulations 1998,
 I certify that this plan is correct.

Checked by E.10.9.04

[Signature]
 Michael Boucaud T.T.S.

Entered. C.M.S. 05-03-2015
[Signature]

Trinidad & Tobago Land Surveyor 15th March 2004