

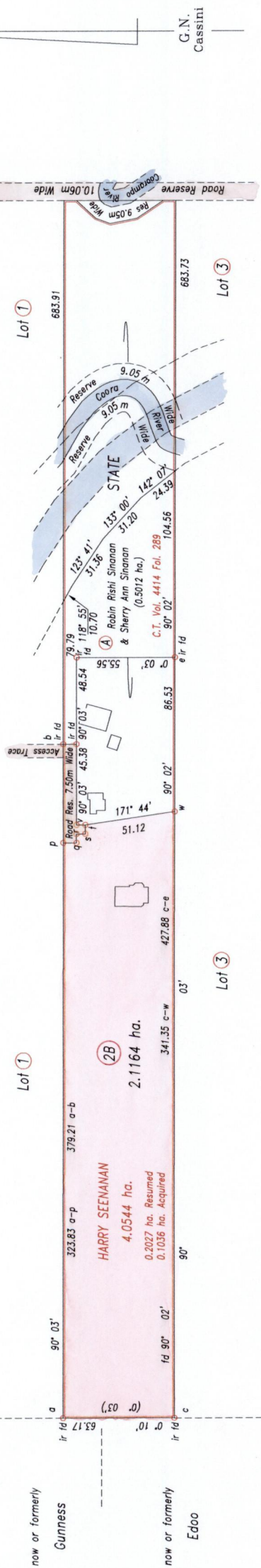
Ward of Siparia
County of St. Patrick
Cadastral Sheet G.13.I. 63E
4/a

R.P.O. Vol. 122 Fol. 227
C.T. Vol. 1514 Fol. 447

U.P.R.N. No.:

Vol 4848 Fol 477

Process SDA 80827



Legend	
P - q	180° 03' 7.50
q - r	90° 03' 5.00
r - s	180° 03' 5.00
s - f	90° 03' 5.00
f - v	0° 03' 5.00

SCALE 1:3000

References: Plan M.J. 63
Bk.944 Fol.16
Bk.470 Fol.51

Distances are in metres

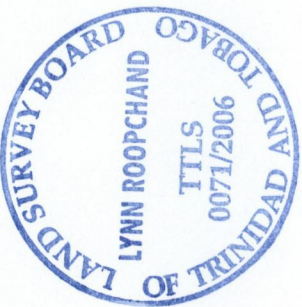
○ Denotes iron put except otherwise stated

Bearings are Cassini Grid based on Solar Observations

In accordance with Regulation 25(1) of the Land Surveyors' Regulations 1998, I certify that this plan is correct.

PLAN of a parcel of land coloured pink in the Ward of Siparia
Containing two point one six four hectares
Surveyed by me, with due authority, in February 2005

Approved
[Signature]
Director of Surveys 2006.2.21



Checked by *[Signature]*
Entered *[Signature]*
Trinidad & Tobago Land Surveyor 6/2/2006