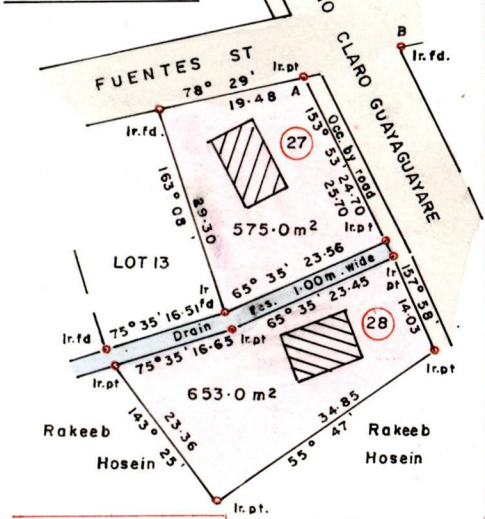


Vol. 4515 fol. 473

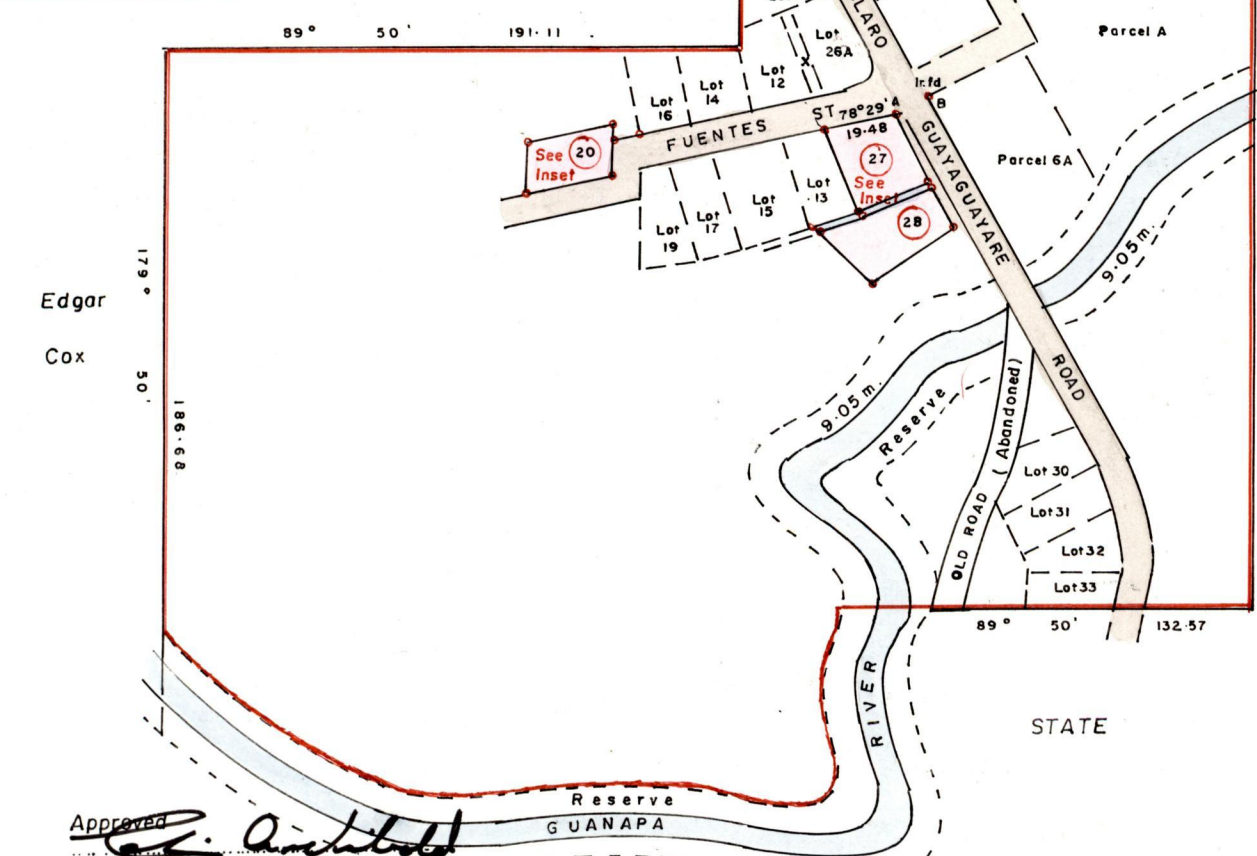
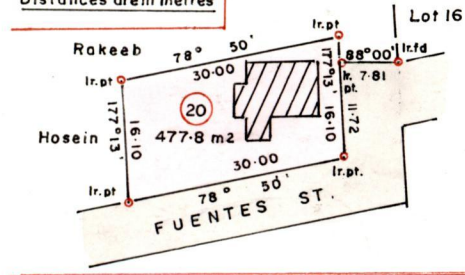
INSET

A - B = 74° 22' 12.63



SCALE: 1/1000

Distances are in metres



Approved *[Signature]*
 Director of Surveys
 980120

SCALE: 1/2500

Distances are in metres

To obtain compass bearings add 10 minutes

Plan of 3 parcels of land coloured pink in the Ward of Cocal
 Containing together one thousand seven hundred and five point eight square metres.

Surveyed by me, with due authority in December 1995

I certify that I have complied with Rule 76 under Section 14 (2) (d) of
 the Land Surveyors' Ordinance 1952, and that this plan is correct.

Checked by *[Signature]*

Entered.....

[Signature]
 Land Surveyor, Trinidad

14/3/97

"SEE OVER"

20. -

25. -

28. - VOL. 4575. FOL. 479 SHERIFFE, ROSE ANN, & RYAN ANTHONY ALI

LOTS	NAMES	AREAS	C. of. T.
23A 24A&25A	Shaffie Hosein	902.1 m ²	Vol. 1934 Fol. 275
26A	Rakeeb Hosein	551.4 m ²	ii 2155 # 313
8	Kassim Hosein	485.7 m ²	" 1934 " 251
5	Habib Mohammed & Jainab Mohammed	550.6 m ²	" 1934 " 281
6A	Shaheed Hosein & ors.	2088.1 m ²	" 1934 " 269
3	Shaheed Hosein & ors	512.4 m ²	" 1934 " 257
9	Younus Hosein	500.1 m ²	" 1934 " 263
A	Younus Hosein & ors	0.4831 ha	" 2155 " 321
4	Khiron Hosein & ors.	1773.0 m ²	" 3448 " 215
32	Jurah Ramnarine	482.5 m ²	" 3665 " 323
31	Shirley N. Mohammed	468.6 m ²	" 3797 " 257

