

Process ID# 80917

R.P.O. Vol. 556 Fol. 343

C.T. Vol. 1682 Fol. 297

Vol. 4823 Fol. 117

Bk. 1163 fol. 157

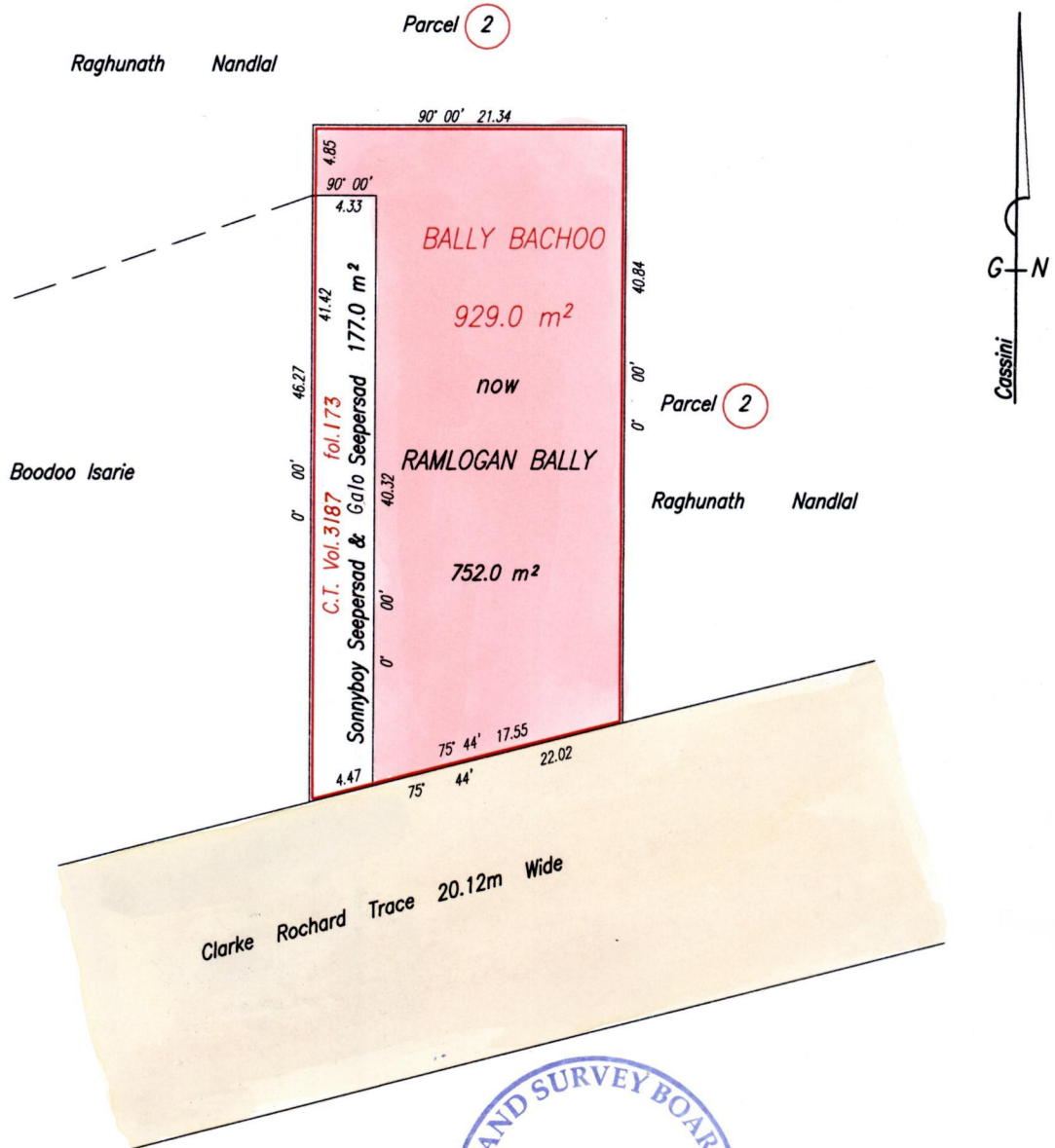
Bk. 980 fol. 126

REMAINING PORTION

Ward of Siparia

County of St. Patrick

Cadastral Sheet G.14.I. 64D
3/a



Approved : *[Signature]*
 Director of Surveys
 2006.7.20



RAMLOGAN BALLY

SCALE 1:500

Distances are in Metres

Bearings are Cassini Grid. To obtain compass bearings add 0 minutes.

This is a true copy of a diagram of nine hundred and twenty nine point zero square metres originally transferred to Bally Bachoo, showing a portion coloured pink and containing seven hundred and fifty two point zero square metres being the remainder after one previous transfer of another portion of land.

In accordance with Regulation 25(1) of the Land Surveyors' Regulations 1998,

I certify that this plan is correct.

Checked by *[Signature]* 15/7/06

Entered *[Signature]*
9.12.2014

[Signature]
 Trinidad & Tobago Land Surveyor 19th March 2006