

Process ID # 80916

1331

30

REMAINING PORTION

R.P.O. Vol. 125 Fol. 651

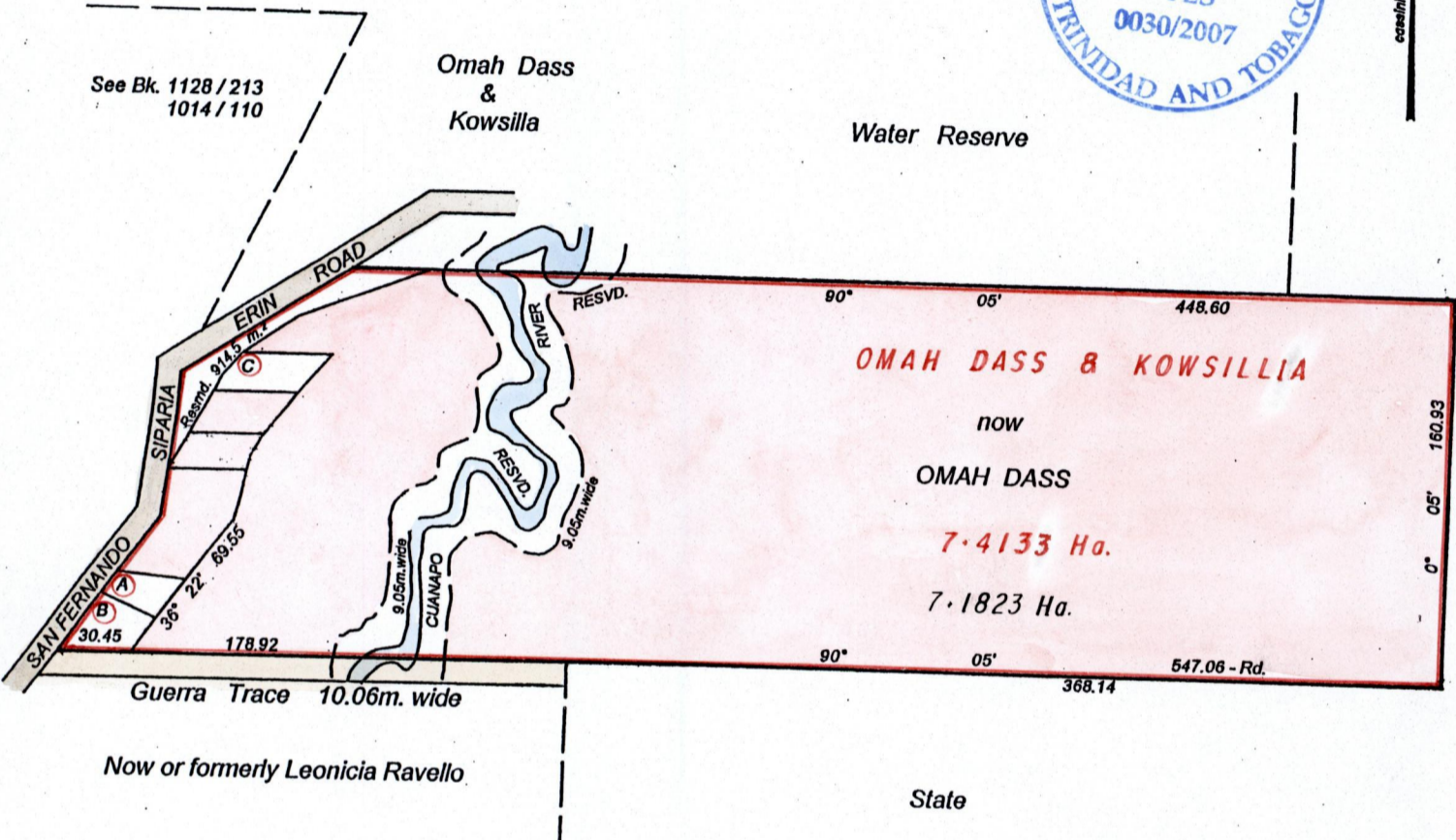
C. T. Vol. 1296 Fol. 435

Vol 4986 Fol 371

Ward of Siparia

County of St. Patrick

Cadastral Sheet G.17.B.  $\frac{73A}{2a}$



Lot A & B - Ramgoolam & Jintee Deonarine 929.0 m <sup>2</sup>	C.T. Vol. 1921 / 529 Bk. 1128 Fol. 213
Lot C S. Ramsahal 464.8 m <sup>2</sup>	C.T. Vol. 2732/391

*Sookram Chingadeen*

Approved *[Signature]*  
Director of Surveys  
2007.12.18

SCALE: 1 / 3000  
Distances are in metres

Note: Bearings are Cassini Grid based on Solar observations

This is a true copy of a diagram of seven point four one three one hectares originally transferred to OMAH DASS & KOWSILLA containing seven point one eight two three hectares the remainder after two (2) transfers and one (1) resumption of another portion of the land in accordance with Regulation 25(1) of the Land Surveyors' Regulations 1998, I certify that this plan is correct.

Checked by *[Signature]* 12/12/07

Entered on ..... Trinidad & Tobago Land Surveyor *[Signature]* 26-09-2007