

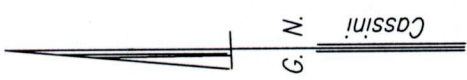


R.P.O. Vol. 49 Fol. 231
 C.T. Vol. 3257 Fol. 319
 Vol. 4826 Fol. 395

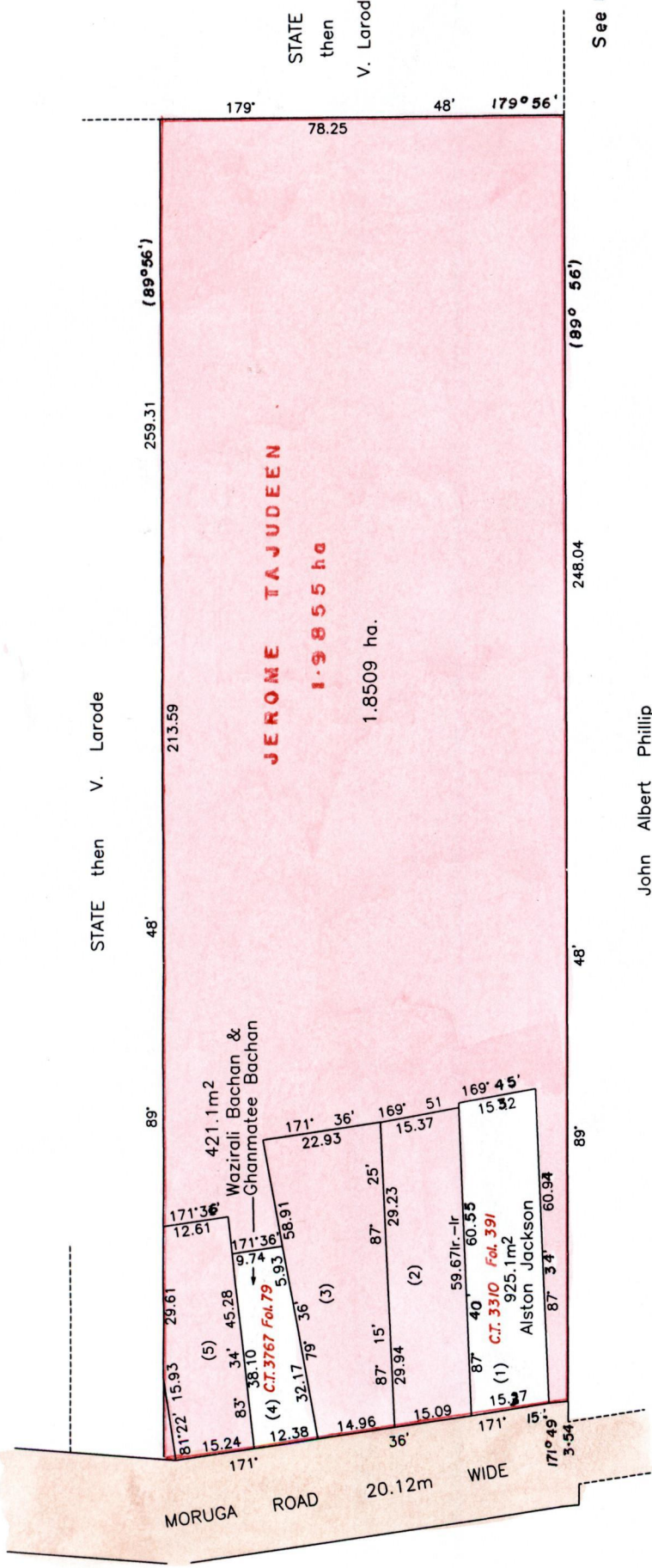
Process 80805

REMAINING PORTION

Cadastral Sheet (G.20.H.) 74 C
 1/c
 Ward of Moruga
 County of Victoria



1331



STATE then V. Larode

JEROME TAJUDEEN
 1.9855 ha
 1.8509 ha.

See Bk. 315 / 59
 Bk. 1179 / 188
 Bk 1227 / 134



SCALE 1/5000
 Distances are in metres

John Albert Phillip

Approved by *[Signature]*
 Director of Surveys 2006.2.3

Note to obtain compass bearings add/subtract minutes

This is a true copy of a diagram of one point nine eight five five hectares Originally

granted to JEROME TAJUDEEN showing a portion

coloured pink and containing one point eight five zero nine hectares being the remainder

after TWO previous transfers of another portion of land.

In accordance with Regulation 25 (1) of the Land Surveyors' Regulations 1998,

I certify that this plan is correct.

Checked by *[Signature]*

Entered on Trinidad and Tobago Land Surveyor *[Signature]* 2005

3

1331