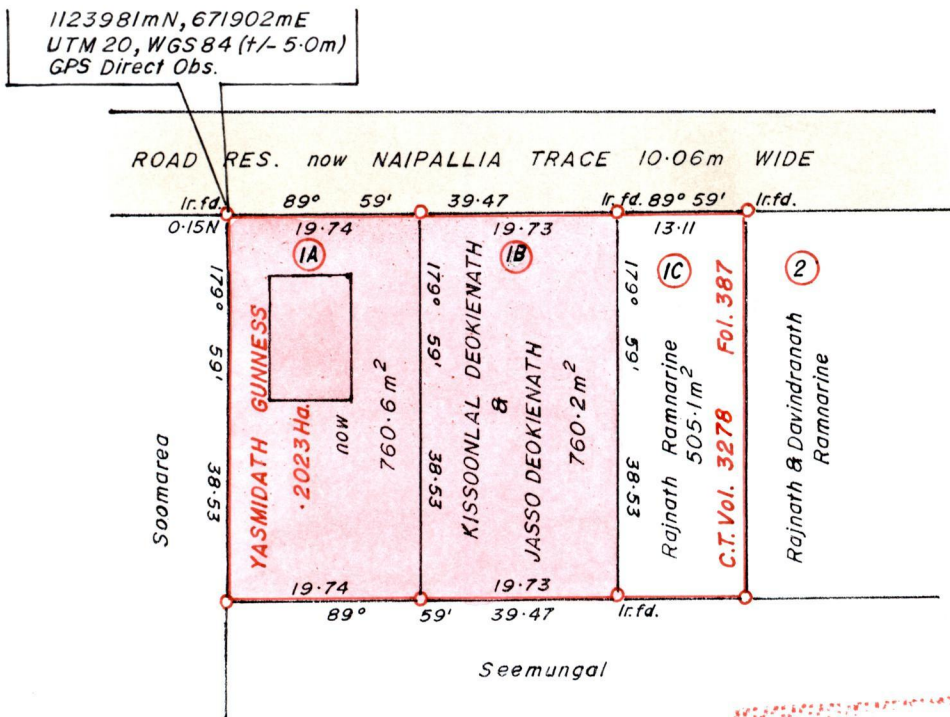


R.P.O Vol. 241 Fol. 433
C.T. Vol. 2488 Fol. 365

Ward of Siparia.
County of St. Patrick.
Cadastral Sheet G.13.K. 63F

Vol 5033 Fol 391

4/c



Bk. 1110:37
" 1175:196

SCALE 1 : 750.

Distances are in METRES

Denotes Iron Put except otherwise stated
Bearings are Cassini Grid based on Solar Observations.

Approved Director of Surveys. 2008-6-4

PLAN of 2 Parcels of land coloured PINK in the Ward of Siparia.

Containing together zero point one five two one hectare.

Surveyed by me, with due authority, in August 2007

**In accordance with Reg. 25(1) of the Land Surveyors' Regulations 1998,
I certify that this plan is correct.**

Checked by 28/5/08

3rd September 2007

Entered Trinidad and Tobago Land Surveyor 2007.

Original Survey BK. 1110 fol. 37

1A Vol 5033 Fol 395 Kissonlal & Jasso Desaienath.

1B Vol. 5042 Fol. 241 Rajindra Kissonlal and Ors.