

Vol. 4579
R.P.O. Vol. 1
C.T. Vol. 2737

Fol. 293
Fol. 329
Fol. 155

1331

22

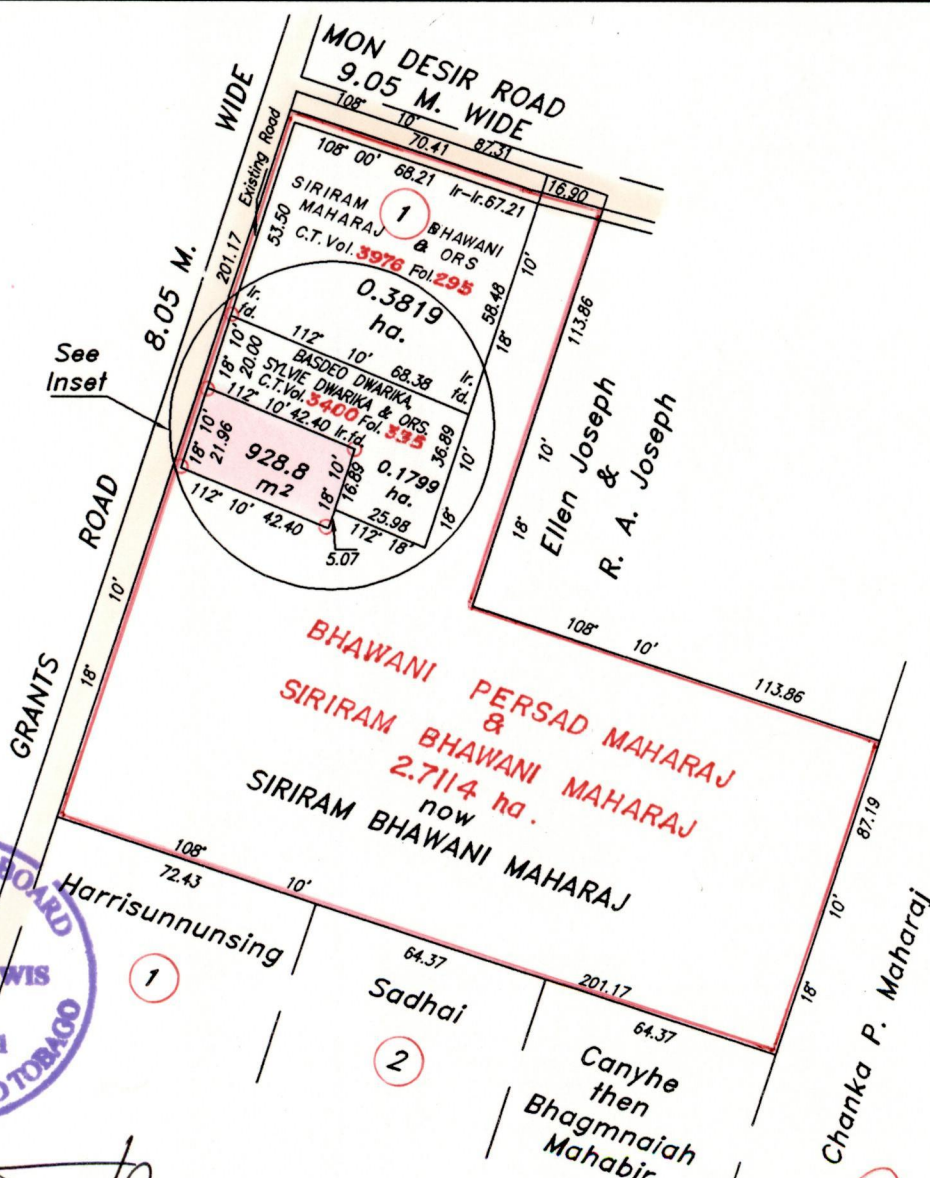
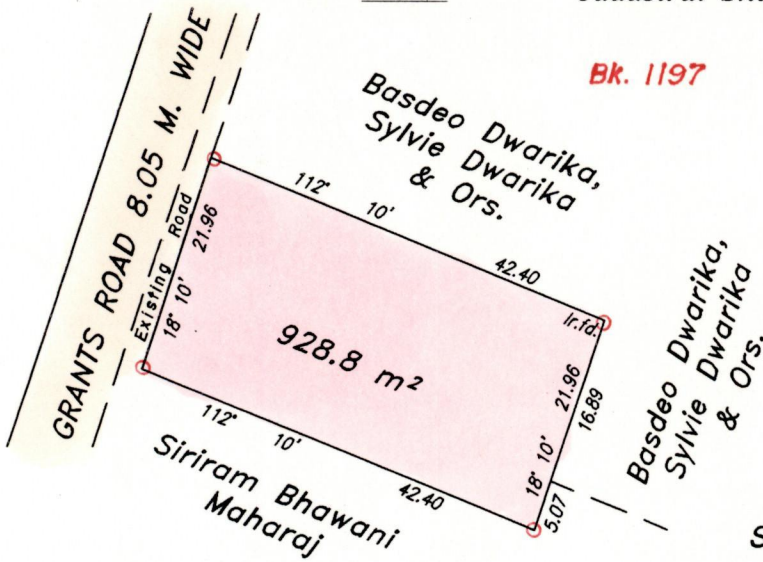
Ward of La Brea
County of St. Patrick
Cadastral Sheet G.6.N. 62.C.
3/d&4/c

U.P.R.N No.

Process Set# 80872

INSET

Bk. 1197 Fol. 188



Approved *[Signature]*
Director of Surveys
2002-08-06

Dane Ramkissoon

SCALE 1/2000
Distances are in metres

○ Denotes Iron put unless otherwise stated.
Bearings are Cassini Grid based on Solar Observations
Plan of a Parcel of land coloured pink in the Ward of La Brea
Containing nine hundred and twenty eight point eight square metres
Surveyed by me with due authority, in August 2000
In accordance with ^{Regulation} Rule 25 (1) of the Land Surveyors' Regulations 1998,
I certify that this plan is correct.

Checked by... *[Signature]* 02-07-22
Entered by Trinidad & Tobago, Land Surveyor... 15/11/02