

R.P.O. Vol.

C.T. Vol. 4618

Fol.

Fol. 427

City of Port of Spain  
County of St. George

Vol. 4700

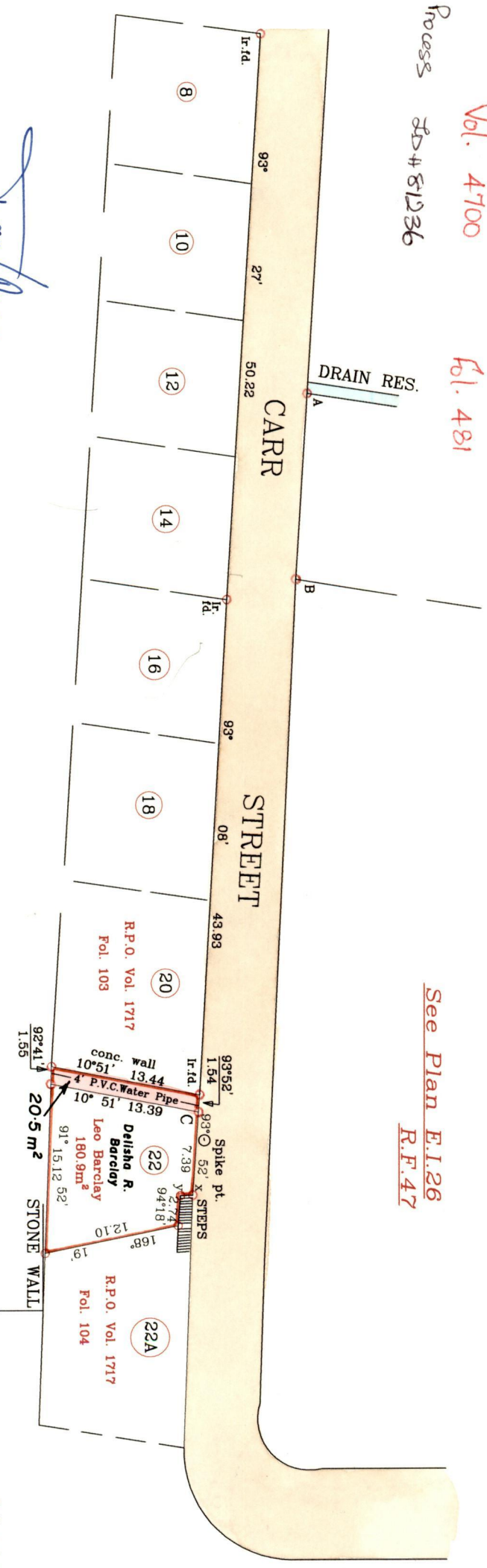
Fol. 481

Process 8D4 81236

See Plan E.I.26  
R.F.47

1331

1331



Approved.....  
 Director of Surveys

NATIONAL HOUSING  
 AUTHORITY

SCALE: 1/500

Delisha Ramcharan Barclay

Spike pt. - A 277° 52' 66.77  
 Spike pt. - B 279° 17' 50.31  
 Spike pt. - C 257° 59' 2.56  
 Spike pt. - I.r.d. 263° 57' 4.06  
 x-y 177° 41' 1.10

Denotes iron put unless otherwise stated  
 Bearings based on solar observations.  
 Note : To obtain compass bearing subtract 00 minutes Distances are in metres.

PLAN of a parcel of land coloured pink in the City of Port of Spain  
 Containing twenty point five square metres. Being portion of Lot No. 22.  
 Surveyed by me, with due authority, in March, 2002 for W.A.S.A.

In accordance with regulation 25 (1) of the Land Surveyors, Regulations 1998,  
 I certify that this plan is correct.

Checked by: M. O'Neil

Winston J. Sylvester

Entered on .....

Trinidad & Tobago Land Surveyor 5-8-02



219