

REMAINING PORTION

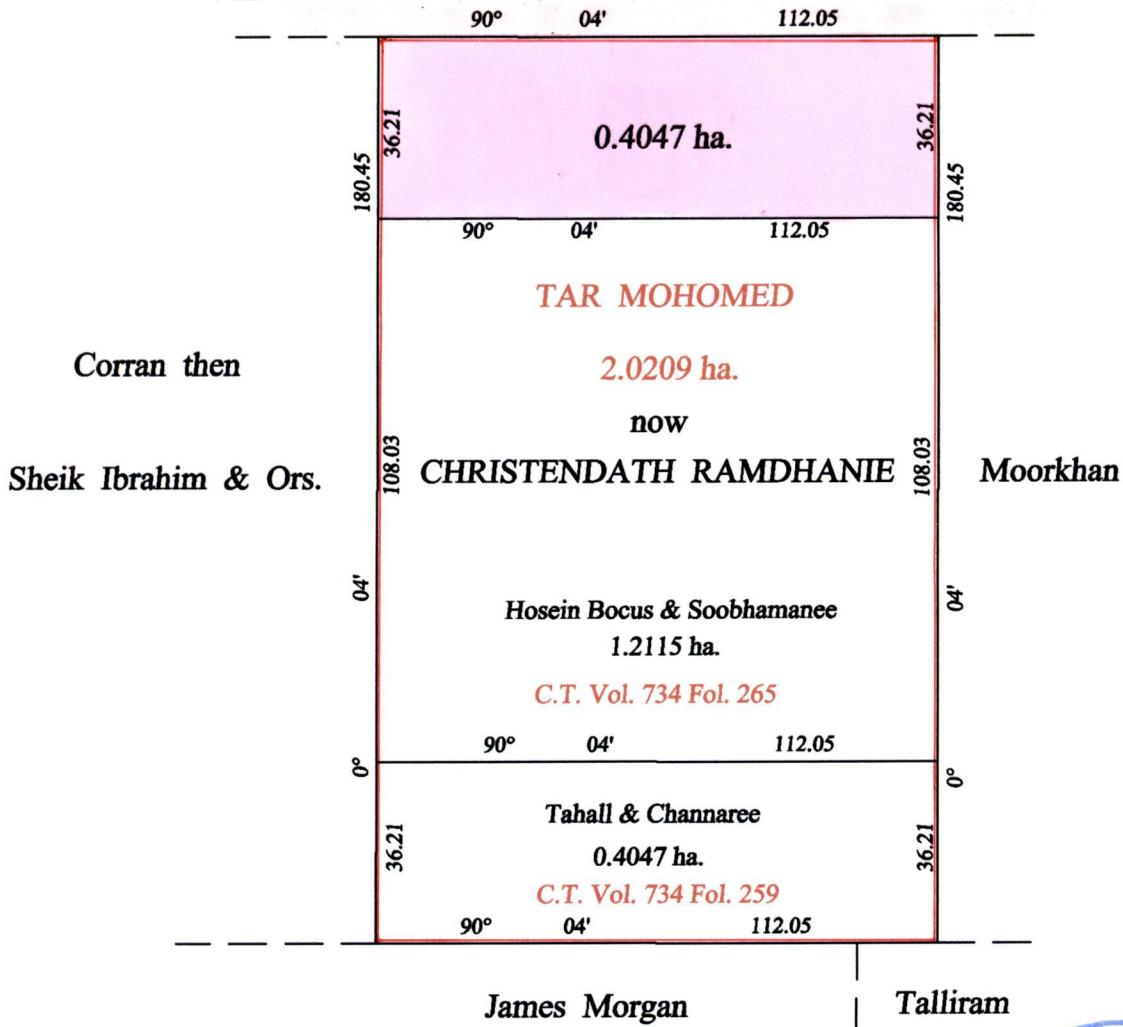
R.P.O. Vol. 92 Fol. 97
C.T. Vol. 734 Fol. 253

Ward of Siparia
County of St. Patrick
Cadastral Sheet (G.13.F) 63.F.
1/d

Vol. 4923 Fol. 207

Process ID 81194

ROAD RESERVE now PATIRAM TRACE 8.05 m. WIDE



Vide Bk. 944 fol. 158
Bk. 724 fol. 229

Approved *[Signature]*
.....
Director of Surveys
2006.6.13

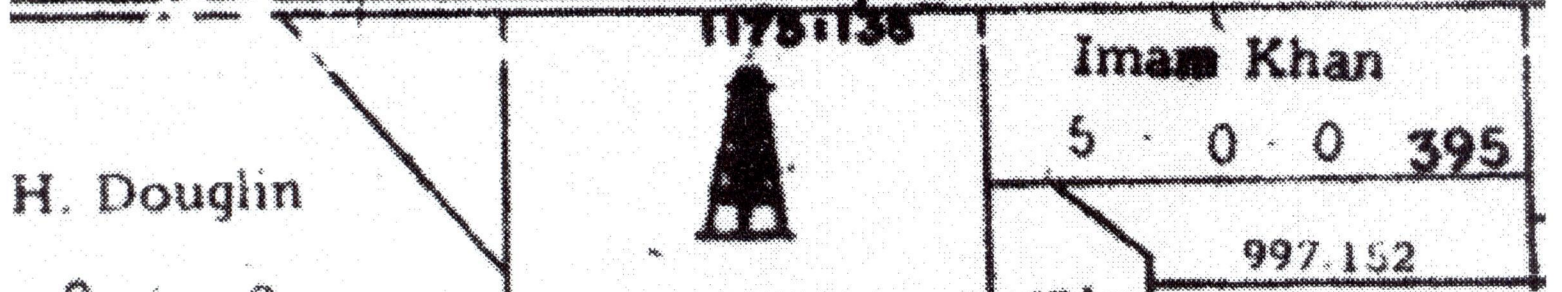
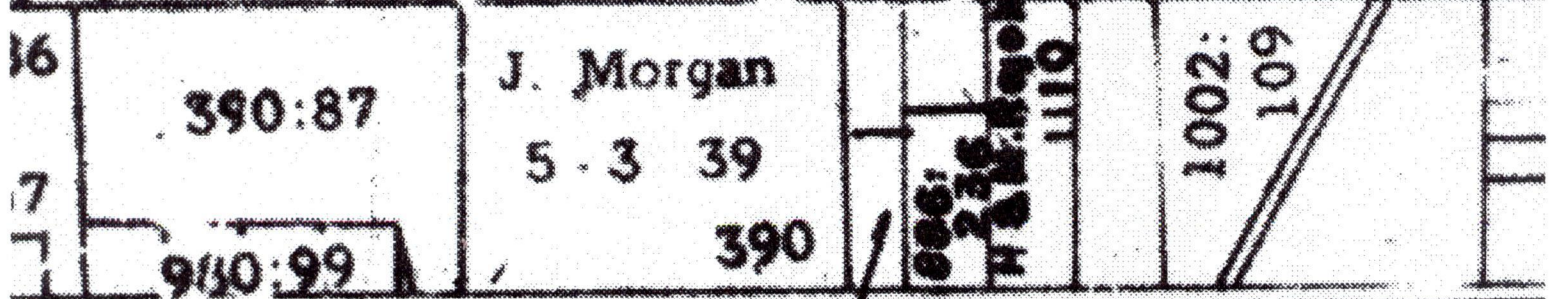
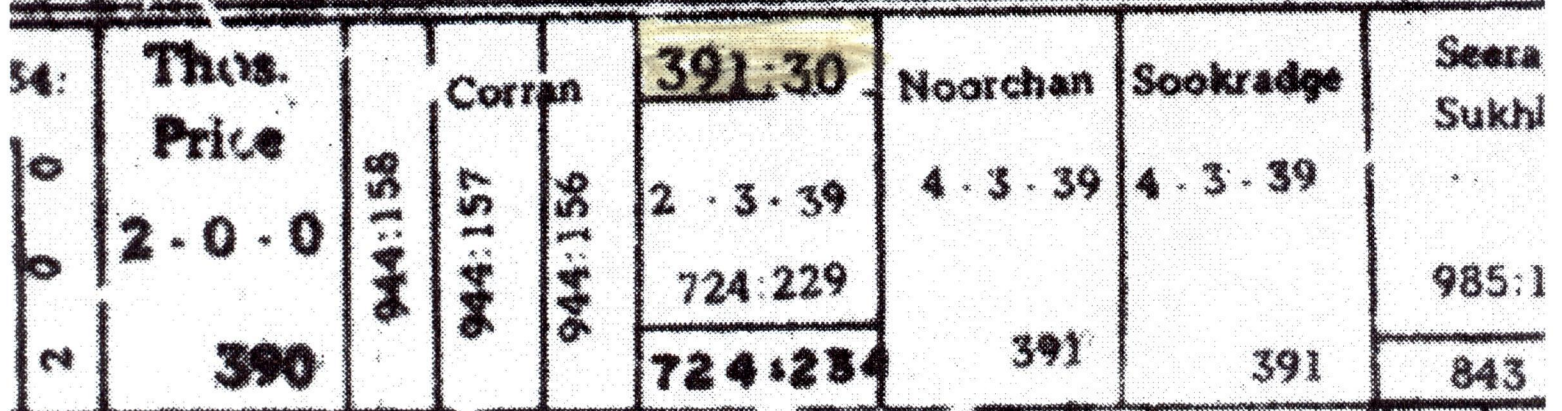
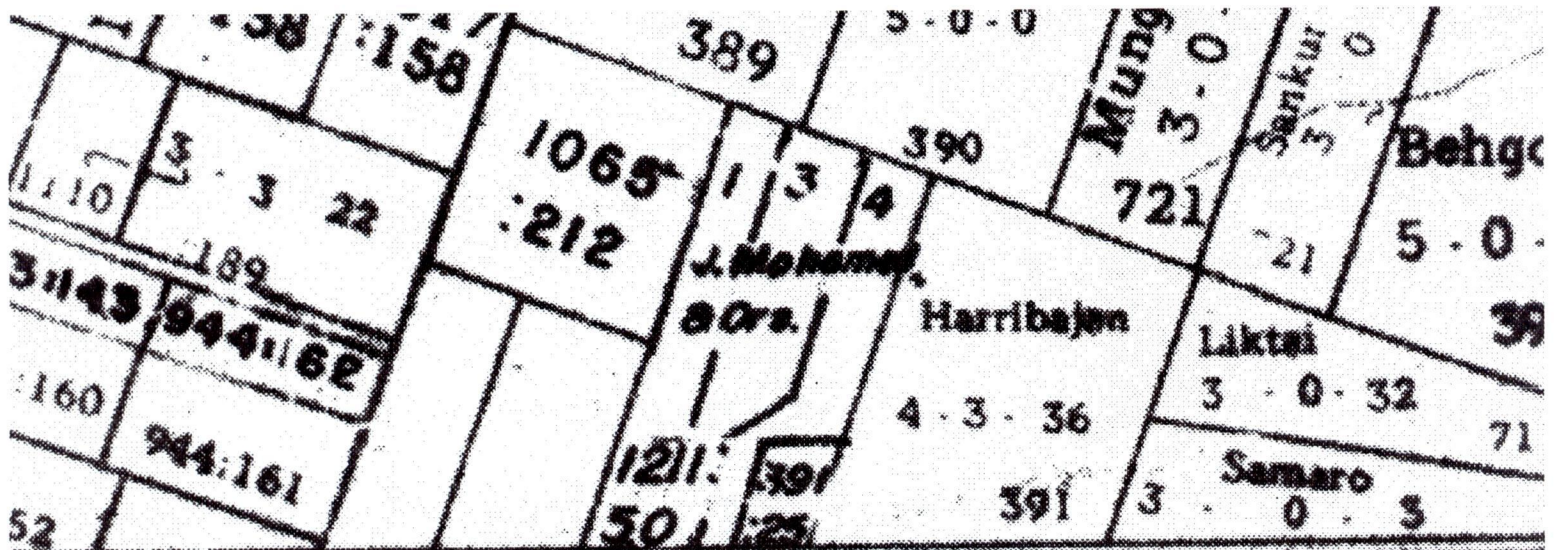
Christendath Ramdhanie

SCALE : 1:1500

Note: Bearings are cassini grid based on solar observations Distances are in metres
This is a true copy of a diagram of two point zero two zero nine hectares, originally transferred to TAR MOHOMED, shewing a portion coloured pink and containing zero point four zero four seven hectares being the remainder after two (2) previous transfers of other portions of the land. In accordance with Regulation 25 (1) of the Land Surveyors' Regulations 1998, I certify that this plan is correct.

Checked by *[Signature]* *Winston Ramcharan*
.....

Entered on Trinidad & Tobago Land Surveyor .. 4th de April .. 2006



63F.
71d