

Process ID# 81191

R.P.O. Vol. 500 Fol. 263

C.T. Vol. 3481 Fol. 475

U.P.I.N. No.

Vol. 4824 Fol. 261



Cadastral Sheet 25D / 2/d, E. 1. A.

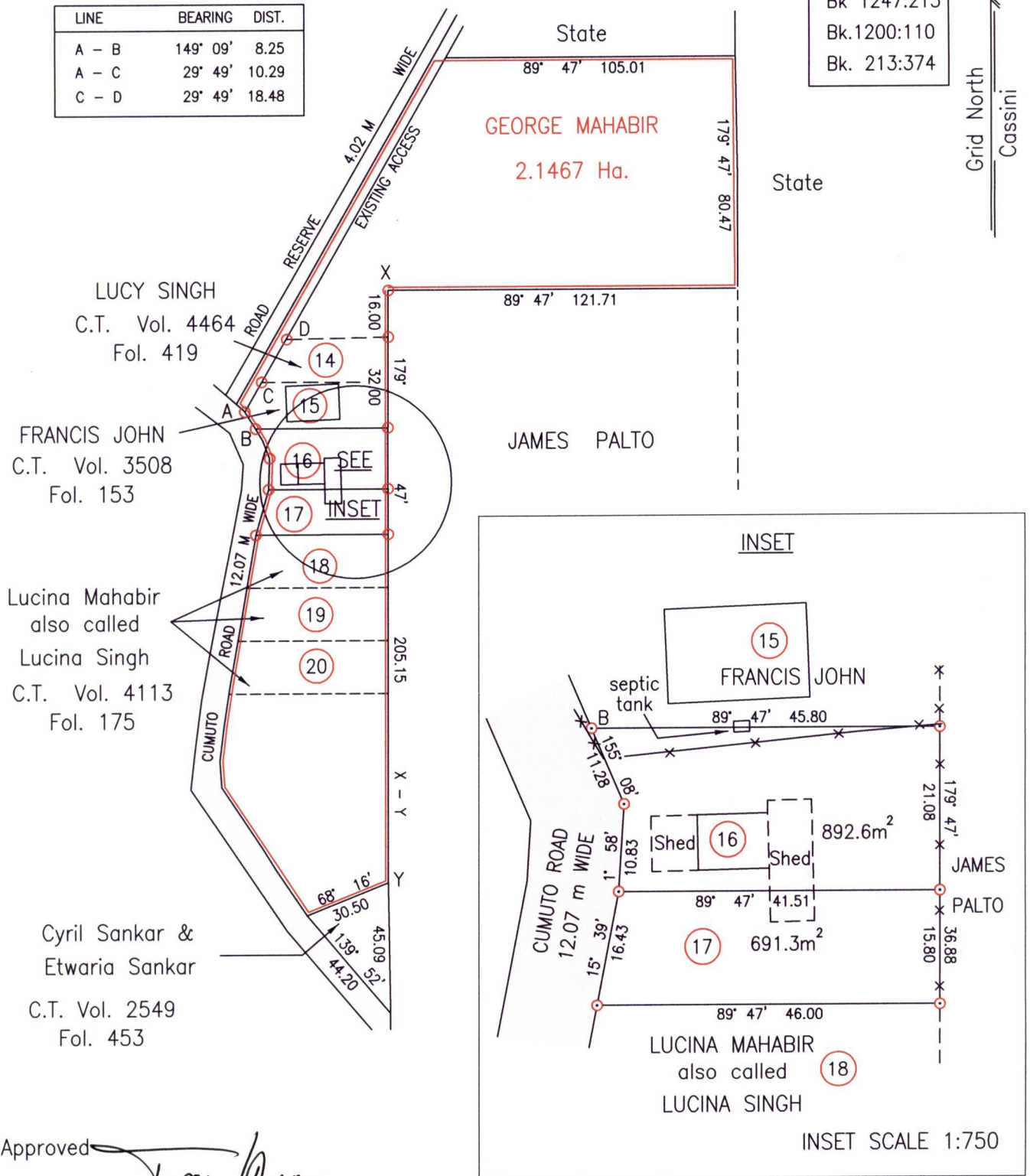
Ward of Tamana

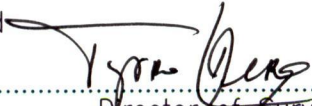
County of St Andrew

LINE	BEARING	DIST.
A - B	149° 09'	8.25
A - C	29° 49'	10.29
C - D	29° 49'	18.48

Vide
Bk 1247:215
Bk.1200:110
Bk. 213:374

Grid North
Cassini



Approved 
 Director of Surveys
 2006.7.20

SCALE 1:2000

Bearings are Cassini Grid based on Solar Obs.

Distances are in Metres

To obtain compass bearing add 13 minutes

---x---x---x--- Denotes chain link wire fence

o Denotes Iron Found unless otherwise stated


Plan of 2 Parcels of land coloured pink in the Ward of Tamana

Containing together one thousand five hundred and eighty three point nine square metres

Surveyed by me, with due authority, in April 2003

In accordance with Regulation 25(1) of the Land Surveyors' Regulations 1998,

I certify that this plan is correct.

Checked by  18/7/06



Entered on CMIS 29-12-2017

Trinidad & Tobago Land Surveyor 26th April 2006

16 - Vol. 4909 Fol. 483 John Mahabir

17 - Vol. 4909 Fol. 485 John Mahabir



1375/50