

Process ID #81177

Vol. 4981 Fol. 513

R.P.O. Vol. 278 Fol. 1

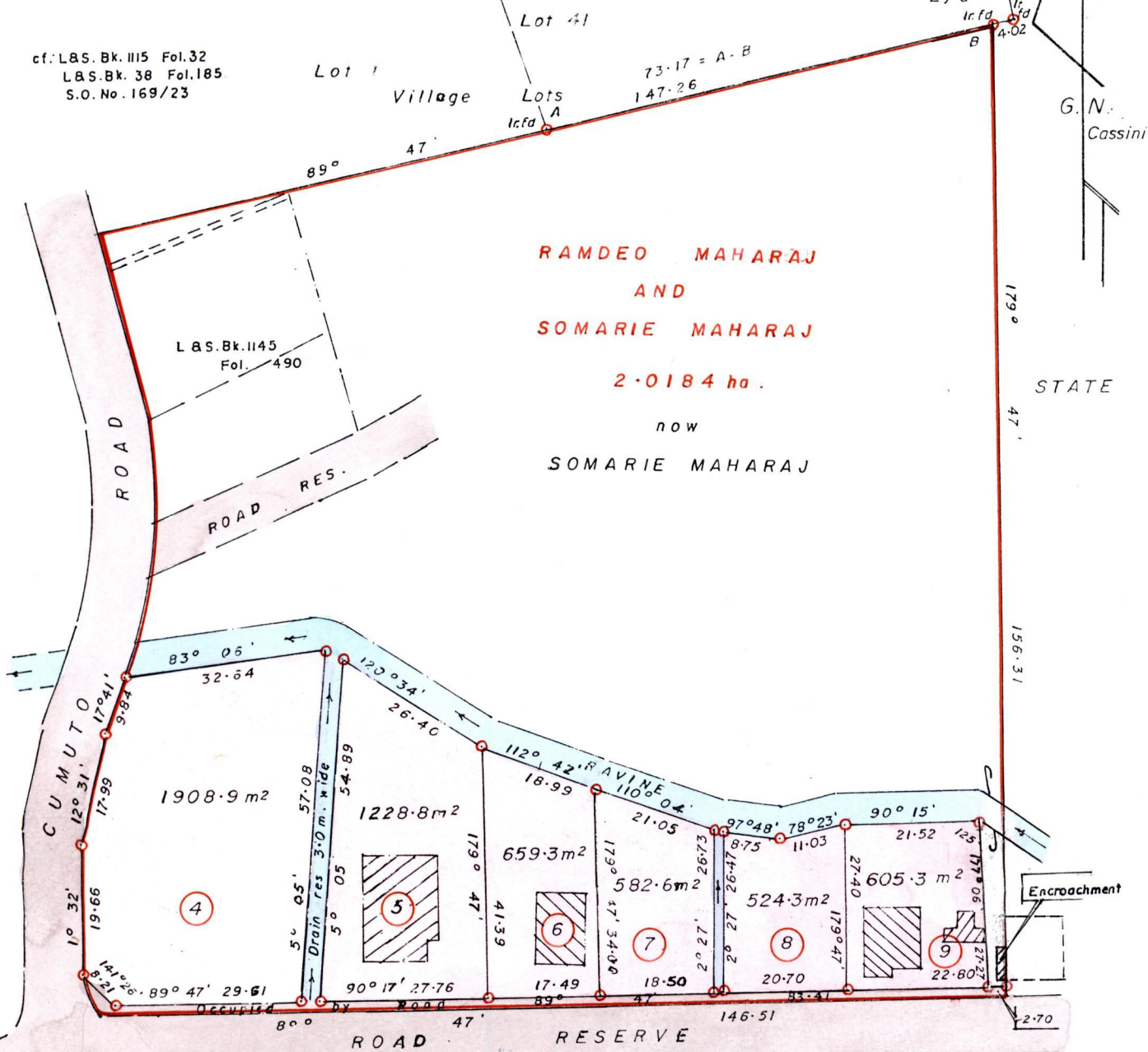
C.T. Vol. 4652 Fol. 141

cf. L.S. Bk. 115 Fol. 32
L.S. Bk. 38 Fol. 185
S.O. No. 169/23

Ward of Tamana

County of St. Andrew

Cadastral Sheet C.21.M. $\frac{25D}{2/d}$



Approved
[Signature]
Director of Surveys
2007-9-21



SCALE : 1 / 1000

Iron put at each corner except otherwise indicated.

Note: To obtain compass bearings ~~subtract~~ ^{add} 13 minutes.

Distances are in metres

PLAN of 6 Parcels of land coloured pink in the Ward of Tamana
Containing together five thousand five hundred and nine point two square metres
Surveyed by me with due authority in February 2005.

In accordance with Reg 25(1) of the Land Surveyors' Regulations 1998,

I certify that this plan is correct.

Checked by *[Signature]*

Arnold Ramon-Fortune

Entered C.M.S. 01-12-2014
[Signature]

Trinidad & Tobago Land Surveyor
19th January 2007

Lot #	C.T. Vol. Fol	Names.
4 -		
5 -		
6 -	Vol. 5512 fol. 371	Stephen Alleyne.
7 -	Vol. 4981 fol. 519	Ronald Charles
8 -		
9 -		



11414/09