

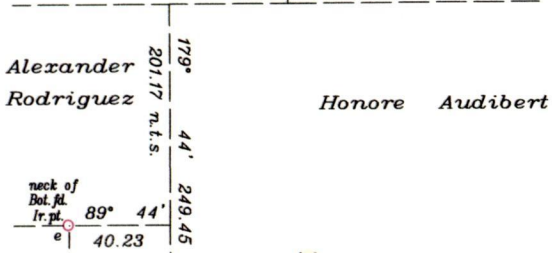
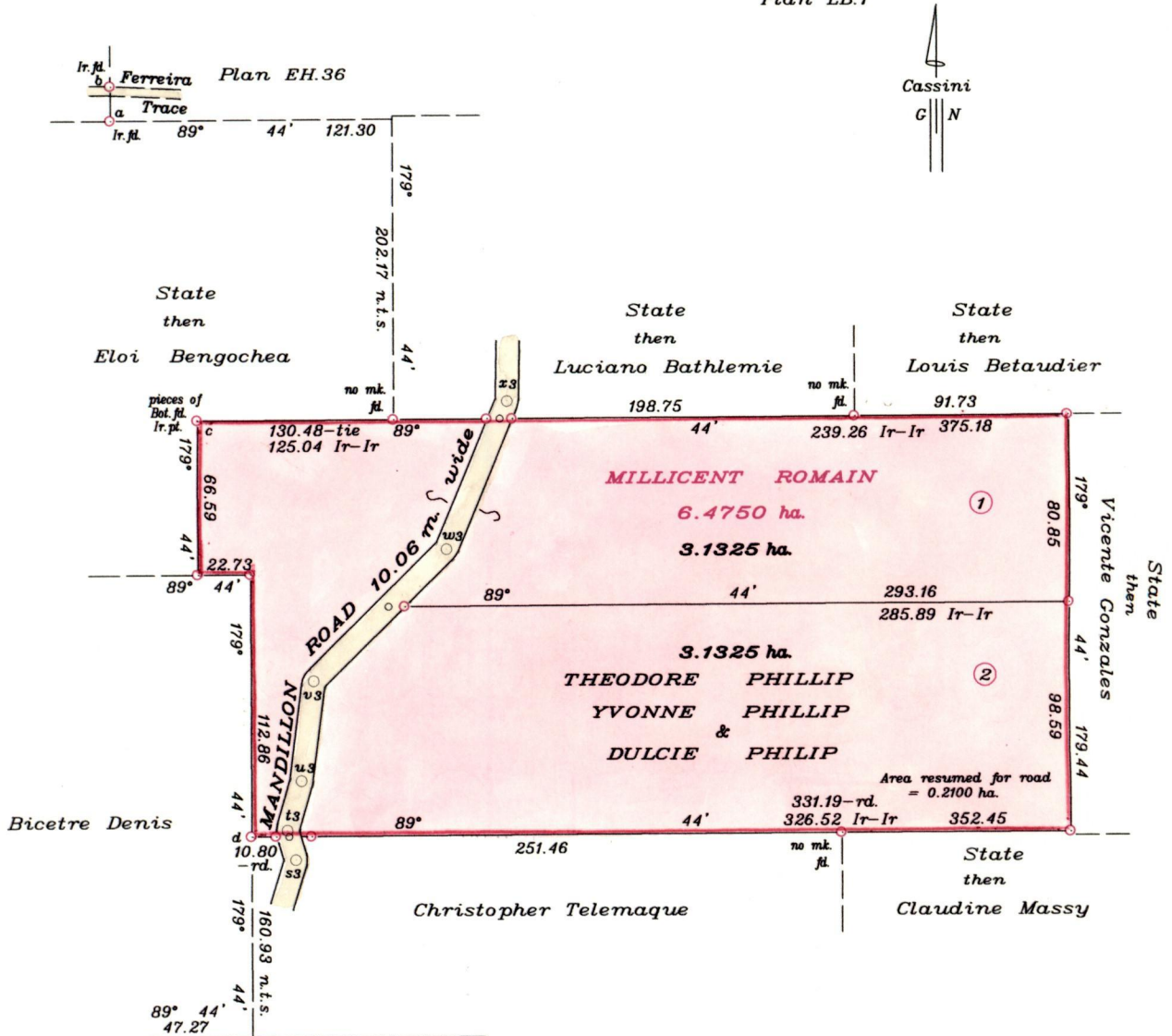
Process LD# 81176

Vol 4706 Fol 463

R.P.O. Vol. 18 Fol. 547

C.T. Vol. 1006 Fol. 419

Cadastral Sheet E.7A 35C
Ward of Turure 3/d
County of St. Andrews
Bk. 168 Fol. 170
Plan LB.1



LEGEND		
a b	00° 12'	14.93
a c	169° 28'	205.46
d e	193° 19'	372.52
e f	111° 17'	441.72
e mm	117° 12'	79.70

Approved *[Signature]*
Director of Surveys
2005.8.4



SCALE 1 : 3000
Distances are in metres

To obtain compass bearing add 16 minutes
○ Denotes Ir.pt. except otherwise stated.
Bearings are based on Solar observations.

PLAN of 2 parcels of land coloured pink in the Ward of Turure
Containing together Six point two six five zero hectares.
Surveyed by me with due authority in February & March, 2005
In accordance with Reg. 25(1) of the Land Surveyors' Regulations 1998,
I certify that this plan is correct.

Checked by *[Signature]*
Entered on *[Signature]*

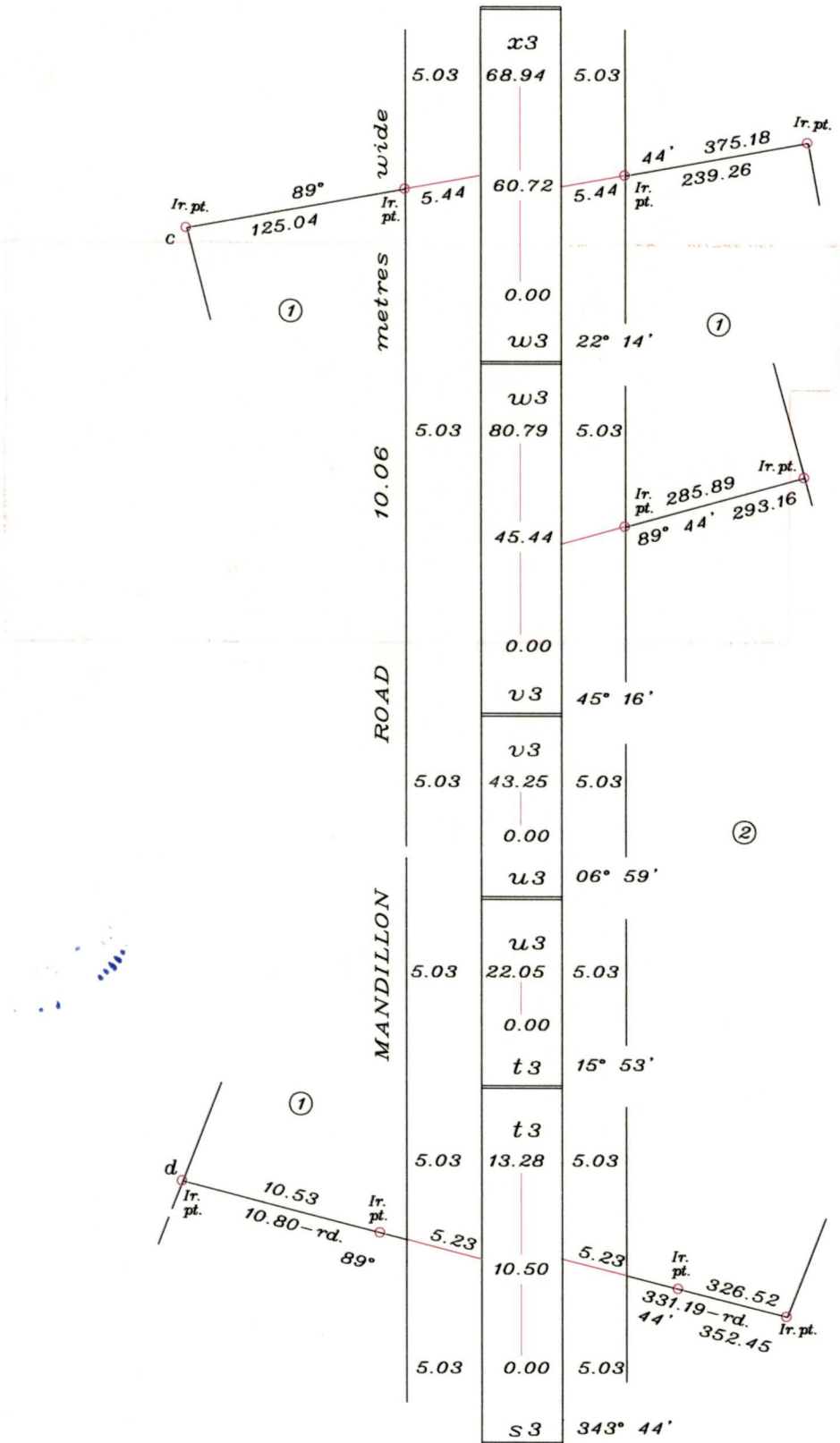
[Signature]
Trinidad & Tobago 25th July, 2005.
Land Surveyor

LOT No. Ct. VOLUME & FOLIO

NAMES

1 4706 fol. 473 THEODORE & YVONNE PHILLIP

2 4706 fol. 473 THEODORE & YVONNE PHILLIP



1195/299