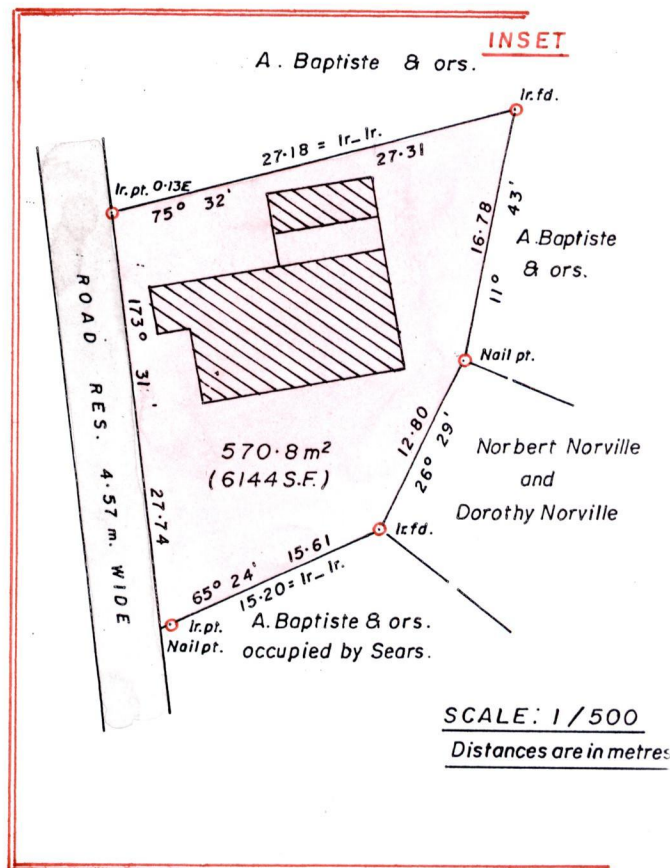
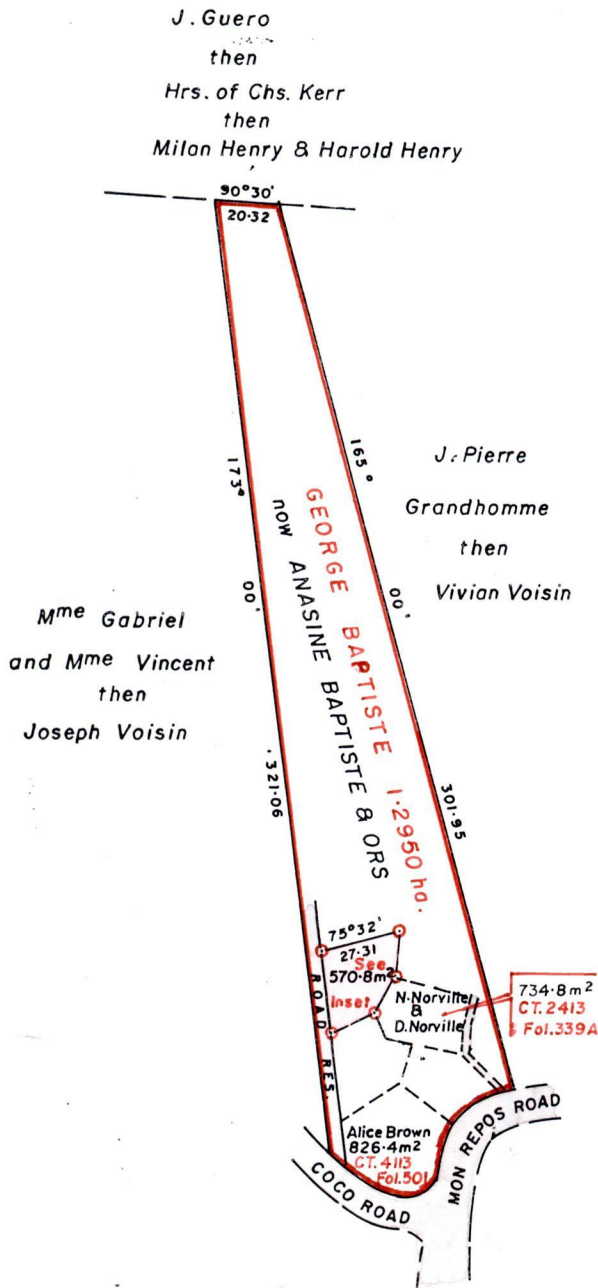


Vol 4650 Fol 497
R.P.O Vol. 57 Fol. 569
C.T. Vol. 1721 Fol. 37

Cadastral Sheet A.20.H. $\frac{13E}{4/a}$
Ward of St. Anns
County of St. George

Process ID# 21168



Approved
[Signature]
Director of Surveys
2004/12/14

SCALE : 1 / 2500

Note: To obtain compass bearings 0 minutes.

Distances are in metres

PLAN of a Parcel of land coloured pink in the Ward of St. Anns
Containing five hundred and seventy point eight square metres

Surveyed by me with due authority in October 2004

In accordance with Regulation 25(1) of the Land Surveyors' Regulations 1998,

I certify that this plan is correct.

Checked by *[Signature]*

[Signature] TTLS

Entered.....

Trinidad & Tobago Land Surveyor. 18th October 2004

