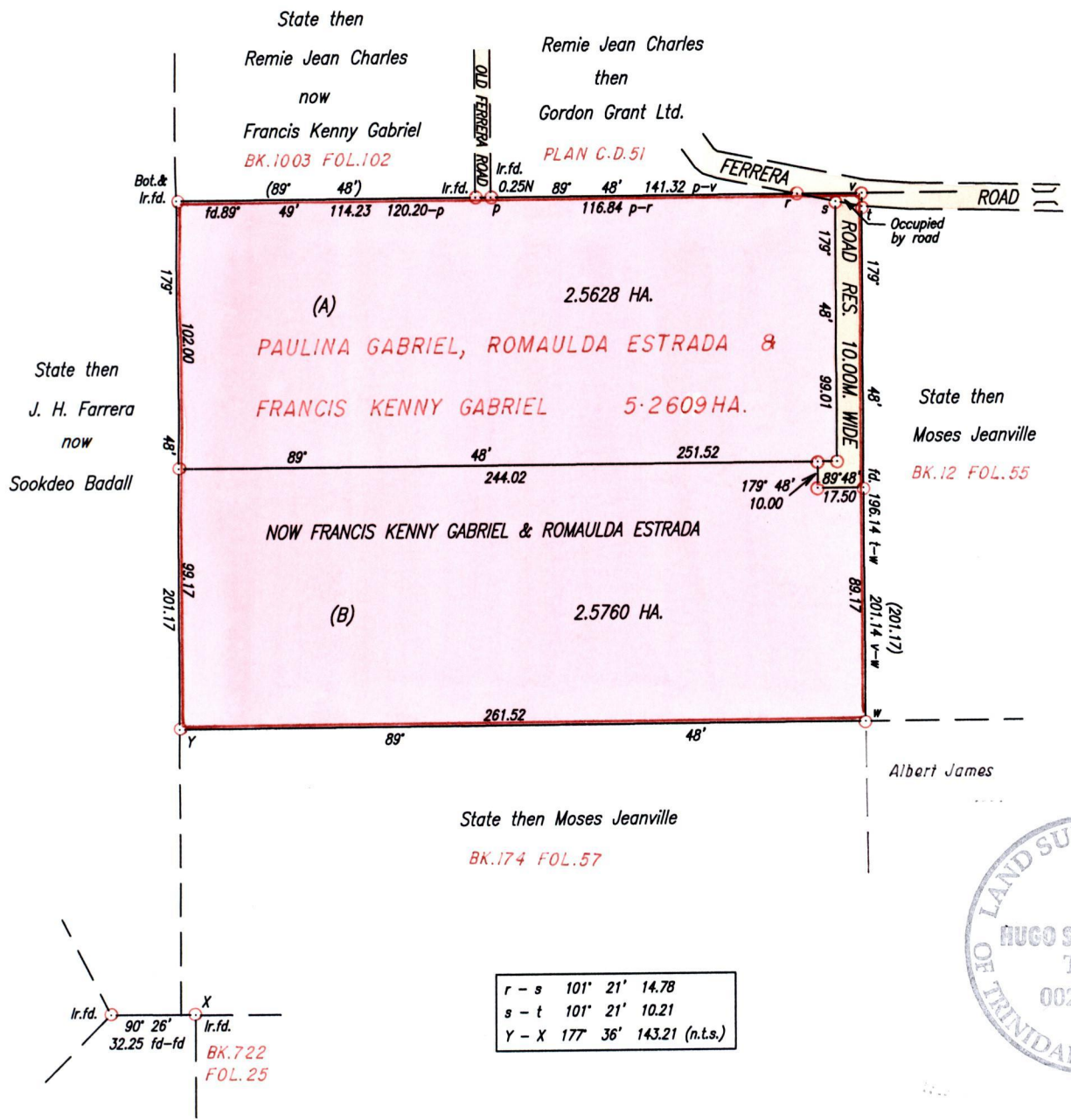


Process 81164  
 R.P.O. Vol. 1 Fol. 471  
 C.T. Vol. 2277 Fol. 89  
 VIDE BK.166 FOL.57  
 S.O. NO. 315/89

**1331**

Ward of Tamana  
 County of St. Andrew  
 Cadastral Sheet E.6.F. 35B  
 3/d

Vol. 4710 Fol. 337



SCALE 1/2500  
 Distances are in Metres.

Approved *[Signature]*  
 Director of Surveys  
 2005-3-14

○ Denotes Iron put unless otherwise stated  
 Bearings are Cassini Grid based on solar Observations

PLAN of 2 Parcels of land coloured pink in the Ward of Tamana  
 Containing together five point one three eight eight hectares  
 Surveyed by me, with due authority, on July 31st, 2004  
 In accordance with Regulation 25 (1) of The Land Surveyors' Regulations 1998.  
 I certify that this plan is correct.

Checked by *[Signature]* 21/11/05

Entered on .....

*[Signature]*  
 15th October 2004  
 Land Surveyor

Lot (A) → Vol. 4710 fol. 335

Francis Kenny Gabriel

Lot (B) → Vol. 4710 fol. 337

Francis Kenny Gabriel



1331/196  
~~195/191~~