

Process SD# 81140

Cadastral Sheet A.14.G. ^{12C}/_{4/d}

R.P.O. Vol. 1972 Fol. 355

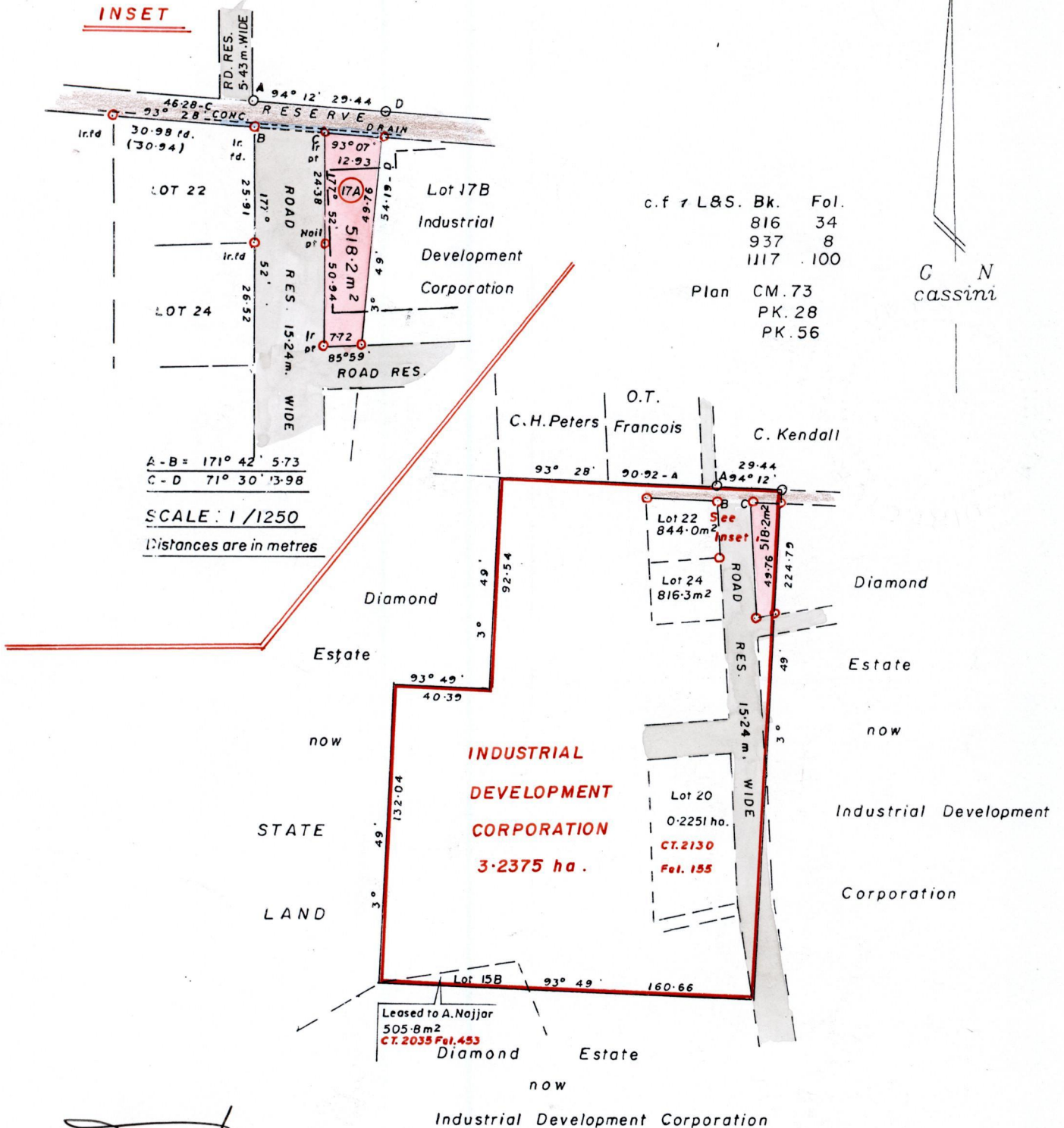
Ward of Diego Martin

C.T. Vol. Fol.

County of St. George

Vol. 4867 Fol. 265

INSET



| | |
|--------------|-------|
| c.f L&S. Bk. | Fol. |
| 816 | 34 |
| 937 | 8 |
| 1117 | 100 |
| Plan | CM.73 |
| | PK.28 |
| | PK.56 |

A-B = 171° 42' 5.73
 C-D = 71° 30' 3.98

SCALE: 1/2500
 Distances are in metres

Approved: *[Signature]*
 Director of Surveys
 2006.4.17

NOTE: Parcel 17A to be amalgamated with Parcel 17B

SCALE: 1/2500

Note: To obtain compass bearings subtract 4 minutes.

Distances are in metres

PLAN of a Parcel of land coloured pink in the Ward of Diego Martin
 Containing five hundred and eighteen point two square metres
 Surveyed by me with due authority in March 2005

In accordance with Regulation 25(1) of the Land Surveyors' Regulations 1998,
 I certify that this plan is correct.

Checked by: *[Signature]* 4/4/06

[Signature] TTLS.

Entered.....

Trinidad & Tobago Land Surveyor.....

20th April 2005

