

REMAINING PORTION

Process SD# 81132

R.P.O. Vol. 260 Fol. 485

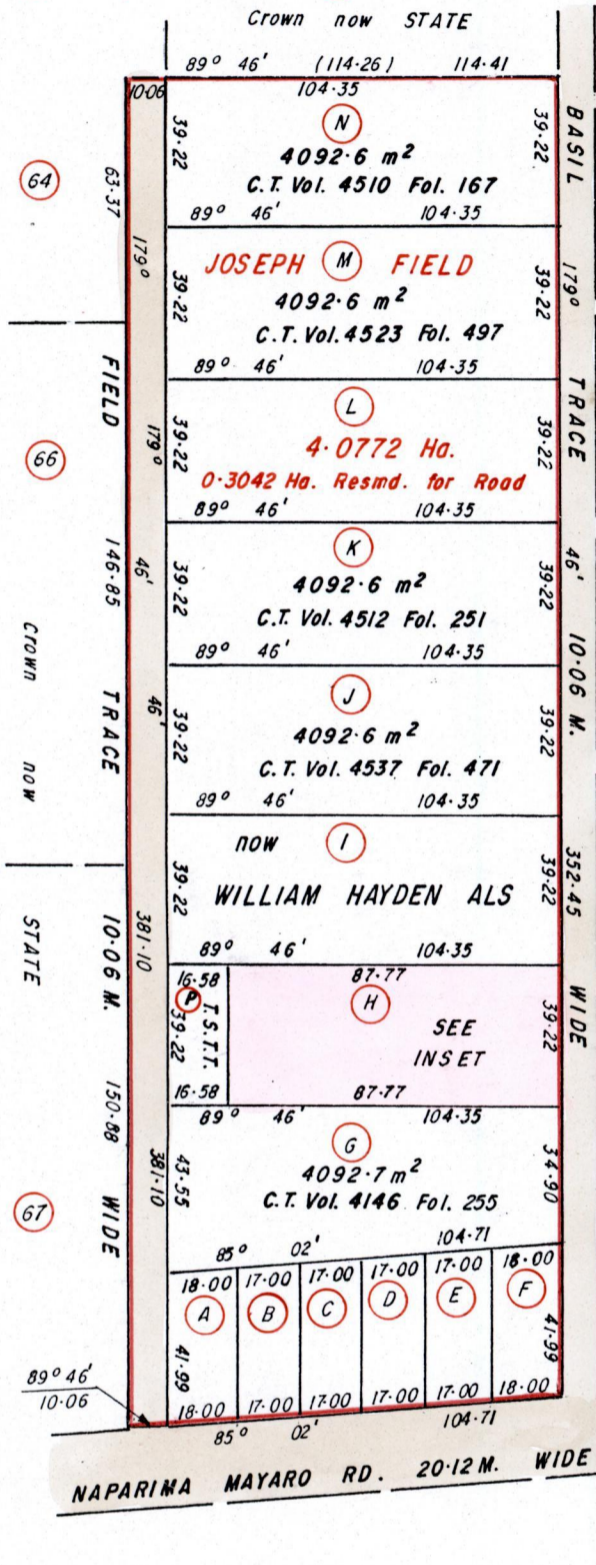
C.T. Vol. Fol.

Vol. 4759 Fol. 109 (60)

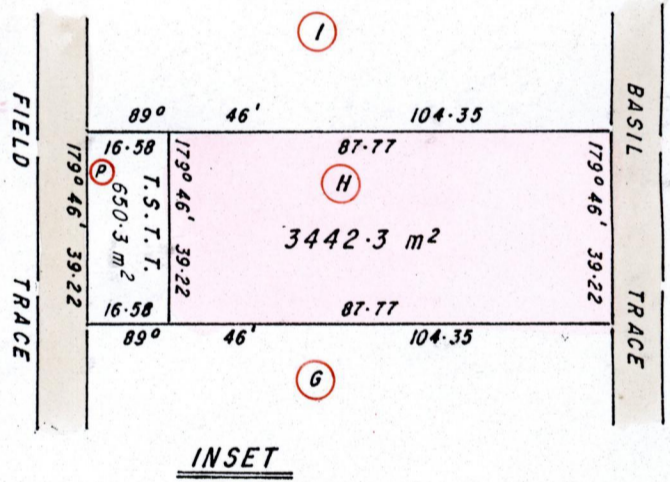
Ward of Cocoi

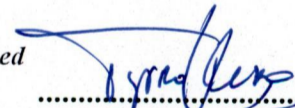
County of Nariva

Cadastral Sheet E.23.M., 56A  
4/a & 4/c



(A)	753.2 m <sup>2</sup>	C.T. Vol. 4440 Fol. 421
(B)	711.4 m <sup>2</sup>	C.T. Vol. 4534 Fol. 523
(C)	711.4 m <sup>2</sup>	C.T. Vol. 4460 Fol. 399
(D)	711.4 m <sup>2</sup>	C.T. Vol. 4534 Fol. 517
(E)	711.4 m <sup>2</sup>	C.T. Vol. 4405 Fol. 147
(F)	753.2 m <sup>2</sup>	
(I)	4092.6 m <sup>2</sup>	C.T. Vol. 4517 Fol. 121
(L)	4092.6 m <sup>2</sup>	C.T. Vol. 4523 Fol. 505
(P)	650.3 m <sup>2</sup>	C.T. Vol. 4631 Fol. 341

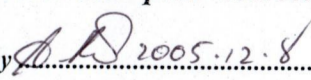
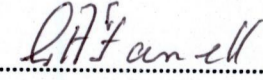


Approved   
 Director of Surveys  
 2005.12.19

Angus & Indra Dookie  
 SCALE 1/2000 & 1/1500 (INSET)  
 Distances are in METRES

Note: To Obtain compass bearings add/subtract minutes

This is a true copy of a diagram of four point zero seven seven two hectares originally transferred to Joseph Field, showing a portion coloured pink and containing zero point three four four two hectare being the remainder after one resumption & fourteen previous transfers of another portion of the land. In accordance with Regulation 25[1] of the Land Surveyors Regulations 1998, I certify that this plan correct.

Checked by  2005.12.8 

Entered ..... Trinidad and Tobago Land Surveyor 15<sup>th</sup> June 2005