

Process JD# 81125
Vol 4787 Fol 497

R.P.O. Vol. 190 Fol. 199

C.T. Vol. 3179 Fol. 517

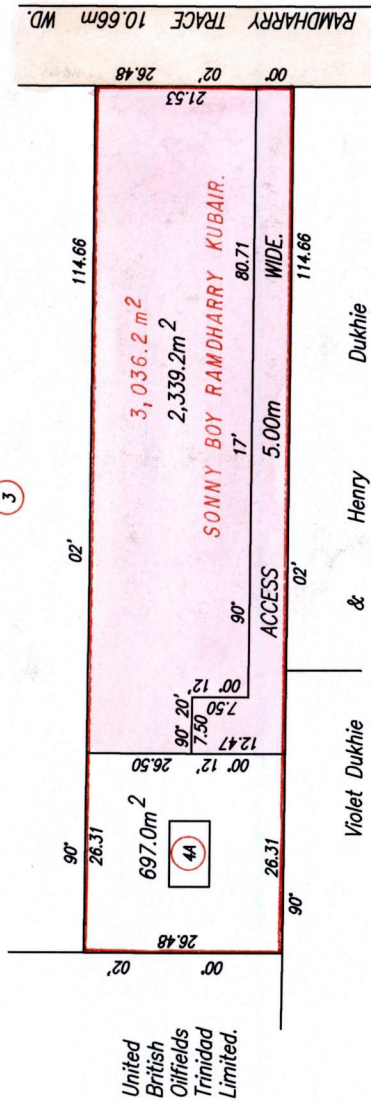
Vide Bk. 1163 fol. 169

" " 1117 " 12

" " 1195 " 54

Cadastral Sheet G.13.K. 63F
3/b
Ward of Siparia
County of St.Patrick.

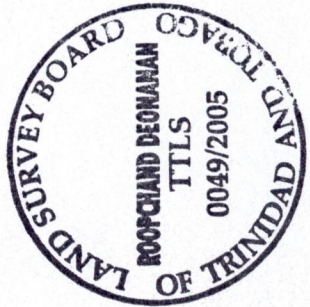
REMAINING PORTION



Approved *[Signature]*
Director of Surveys
2005.12.07

This is a true copy of a diagram of a Parcel of land in the Ward of Siparia
Containing three thousand and thirty six point two square metres.
Showing a portion coloured pink and containing two thousand, three hundred and
Remainder after one previous transfer of another portion of the land.
In accordance with Regulation 25(1) of the Land Surveyors' Regulations 1998,
I certify that this plan is correct.

Checked by *[Signature]*
Trinidad & Tobago Land Surveyor
Entered *[Signature]* 9th May 2005



Lot No.44 Ramraj Bajrangee & Luciana Bajrangee C.T. 4615 fol. 307

SCALE 1:1000
Distances are in Metres

thirty nine point two square metres being the

