

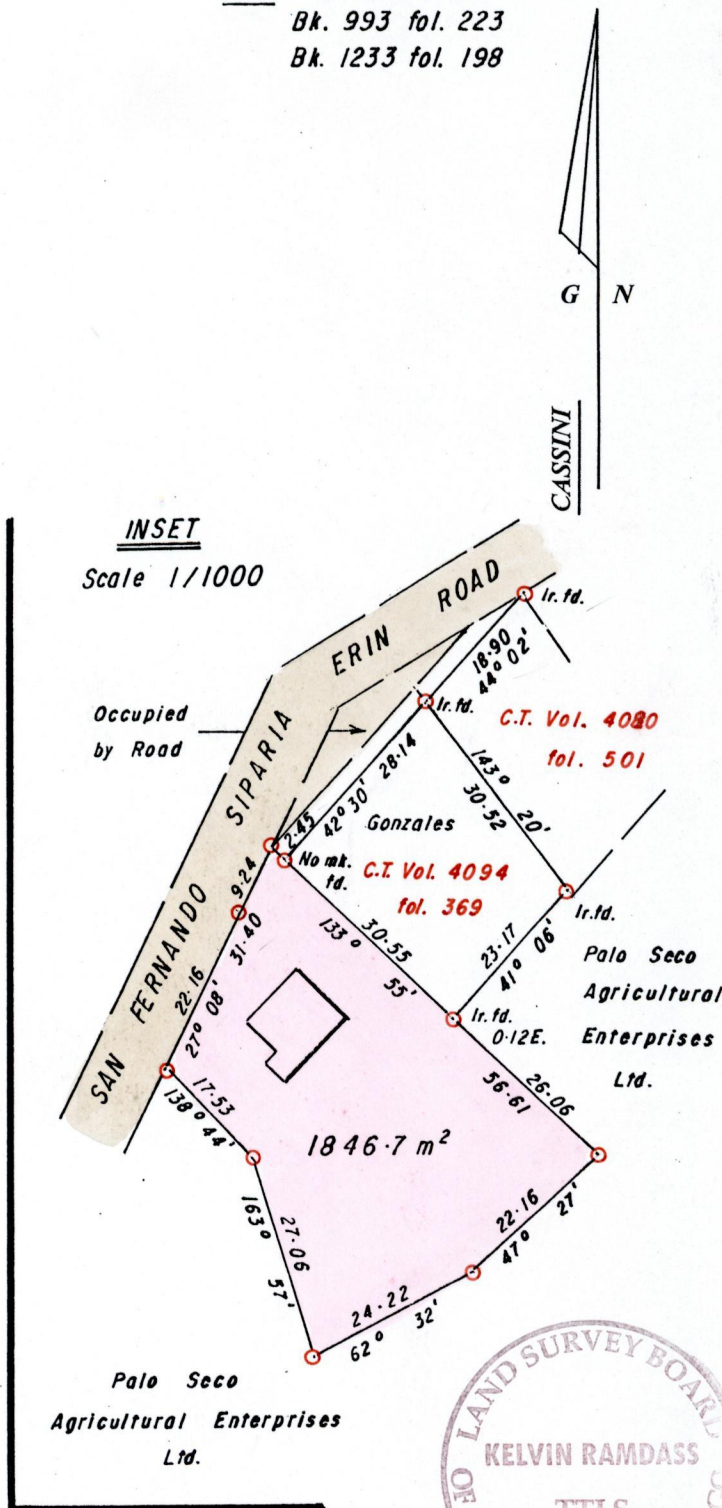
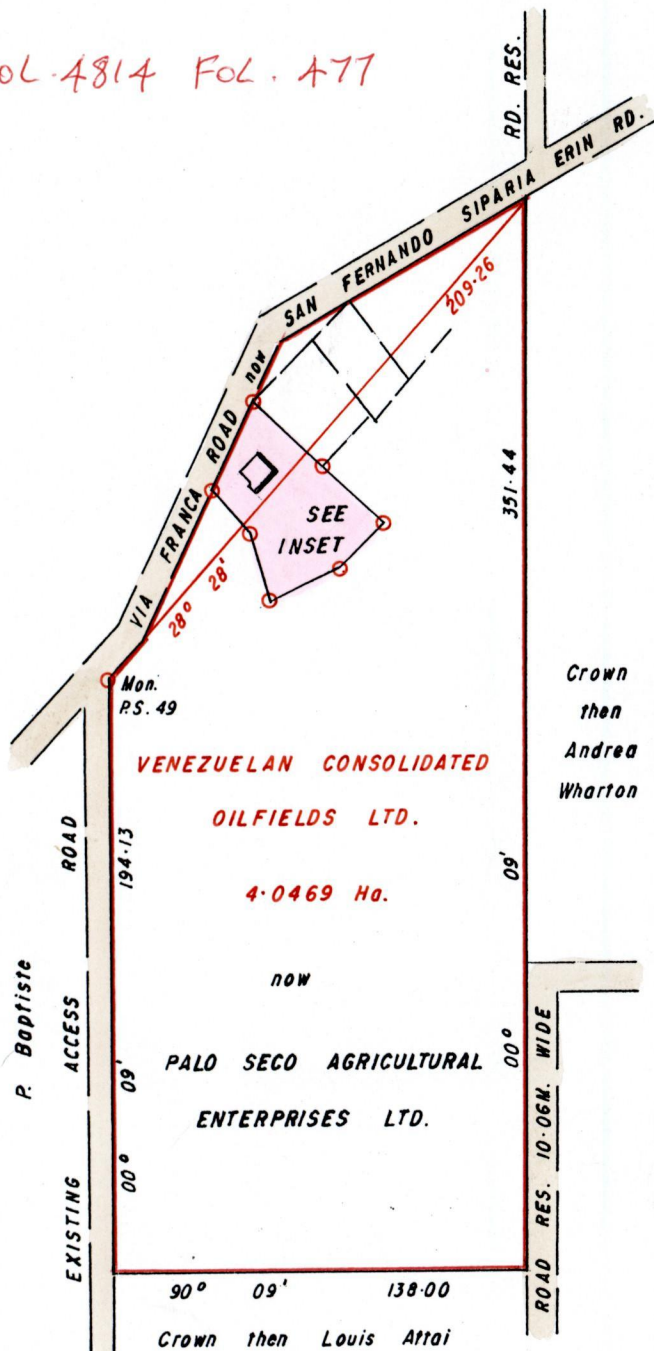
Process ID# 81118

R.P.O. 93 Fol. 611
C.T. 643 Fol. 339

Ward of Erin
County of St. Patrick
Cadastral Sheet G.16.M., 72F
& G. 21. A. 1/b

Ref. Bk. 435 fol. 225
Bk. 993 fol. 223
Bk. 1233 fol. 198

VOL-4814 Fol. 477



Approved

Kevin Ramdass
Director of Surveys 2006-3-15

○ Denotes Iron put unless otherwise stated
Bearings are Cassini Grid based on Solar Obs.
SCALE 1/2500 & 1/1000 (INSET)
Distances are in METRES

Note: To Obtain compass bearings add/subtract minutes

PLAN of a Parcel of land coloured PINK in the Ward of Erin
Containing one thousand eight hundred and forty six point seven square metres
Surveyed by me, with due authority, in February 2002
In accordance with Regulation 25 (1) of the Land Surveyors' Regulations 1998,
I certify that this plan is correct.

Checked by *LS 12.01.06*

Entered *[Signature]*

Kevin Ramdass
Trinidad and Tobago Land Surveyor..... *2006*