

Process *FD# 81096*

R.P.O. Vol. 459 Fol. 623

C.T. Vol. Fol.

Vol. 4712 Fol. 489

Ward of Savana Grande

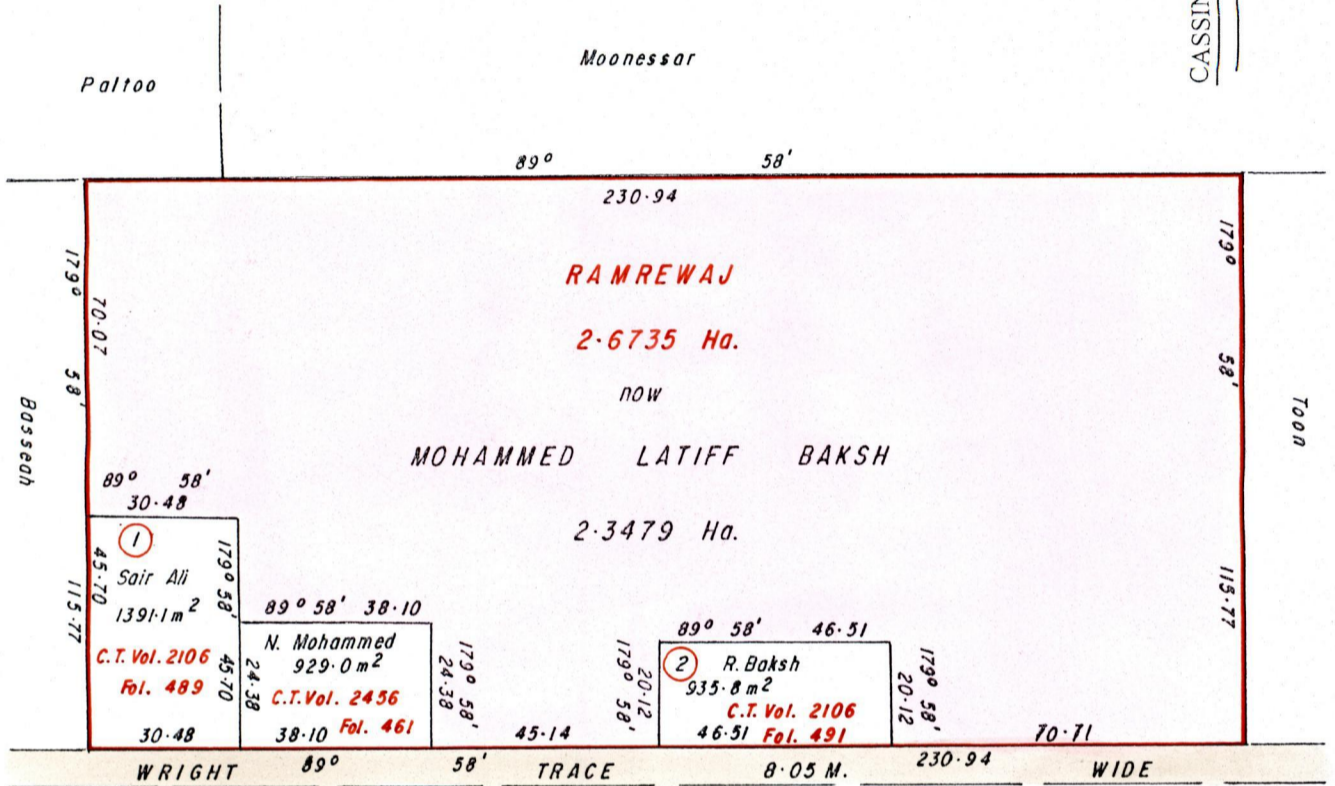
County of Victoria

Cadastral Sheet 6.14. D. & 6.15.A., 64E

1/a

Ref. Bk. 1110/19

Bk. 1002/215



Approved

[Signature]
Director of Surveys
2005.7.5

Mohammed Latiff Baksh

Note: To Obtain compass bearings add/subtract minutes

SCALE 1/1500
Distances are in METRES

This is a true copy of a diagram of two point six seven three five hectares originally transferred to RAMREWAJ, showing a portion coloured pink and containing two point three four seven nine hectares being the remainder after three previous transfer of another portion of the land. In accordance with Regulation 25[1] of the Land Surveyors Regulations 1998, I certify that this plan is correct.

Checked by *MM. 24/6/05*

[Signature]

Entered

Trinidad and Tobago Land Surveyor..... *14/6/05* 2005

LOT# G.T. Vol & Folio

Names.



1331/1631
~~1195/286~~