

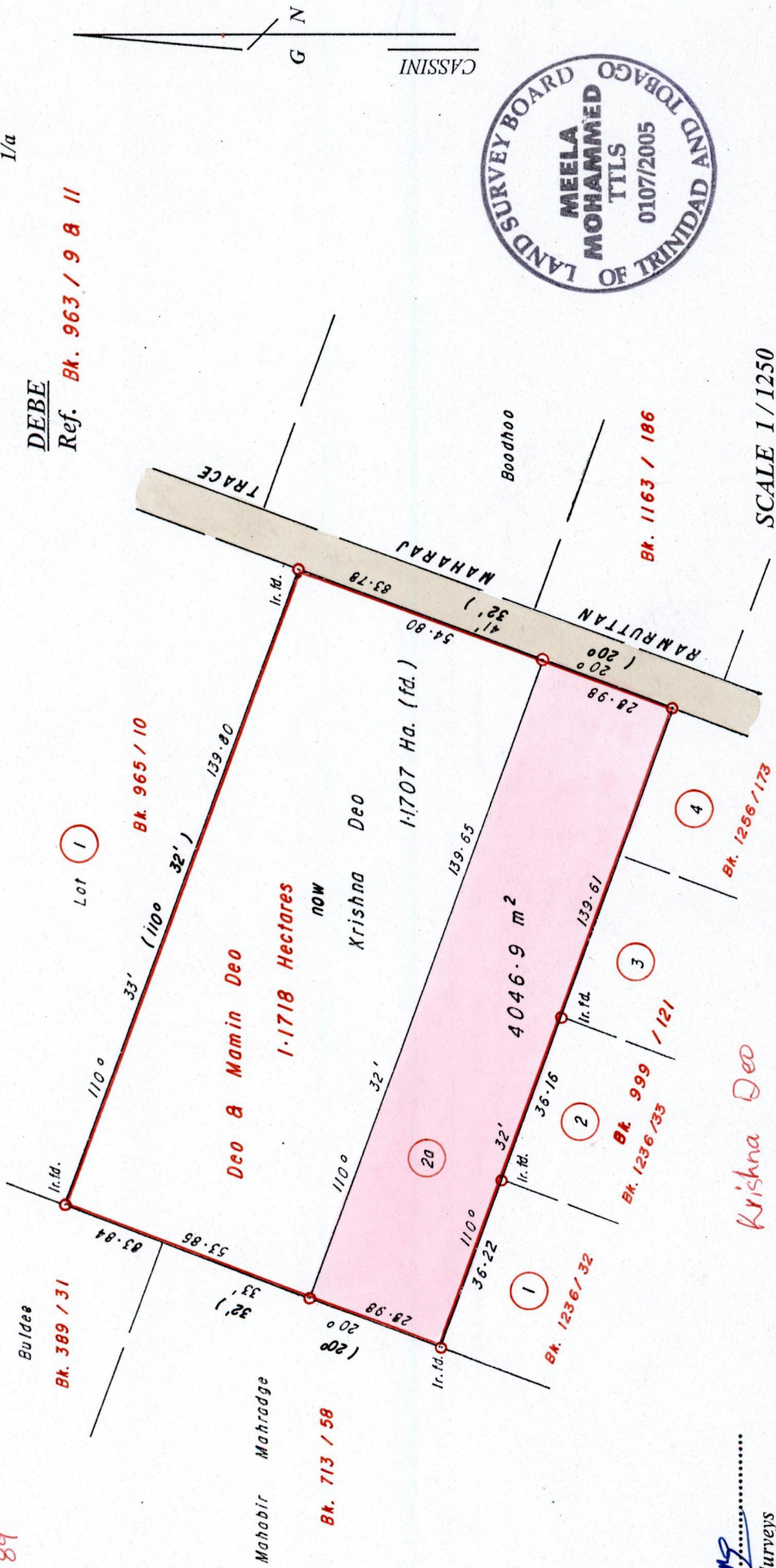
R.P.O. Vol. 56
C.T. Vol. 1600

Vol. 4693 Fol. 89

Process 81094

Ward of Naparima
County of Victoria
Cadastral Sheet G.13.B., 63F
1/a

DEBE
Ref. **Bk. 963 / 9 & 11**



SCALE 1 / 1250

Distances are in METRES
○ Denotes Iron put unless otherwise stated

Approved *[Signature]*
Director of Surveys
2005.7.8

Bearings are Cassini Grid based on Solar Obs.

PLAN of a Parcel of land coloured PINK in the Ward of Naparima
Containing four thousand and forty six point nine square metres
Surveyed by me, with due authority, in April 2005

In accordance with Regulation 25 (1) of the Land Surveyors' Regulations 1998, I certify that this plan is correct.

Checked by *an 05/07/04* Meela Mohammed

Entered
Trinidad and Tobago Land Surveyor 11 th. April 2005.

