

Cadastral Sheet C.4.H. 6C  
Ward of Toco 2/c&2/d  
County of St. David

Fol. 289

C.T. Vol. 2596

Vol. 4774 (Fol. 527)  
Process ID# 8190

See Plans: E.H147  
Bk. 1282/29&30  
G N  
Cassini

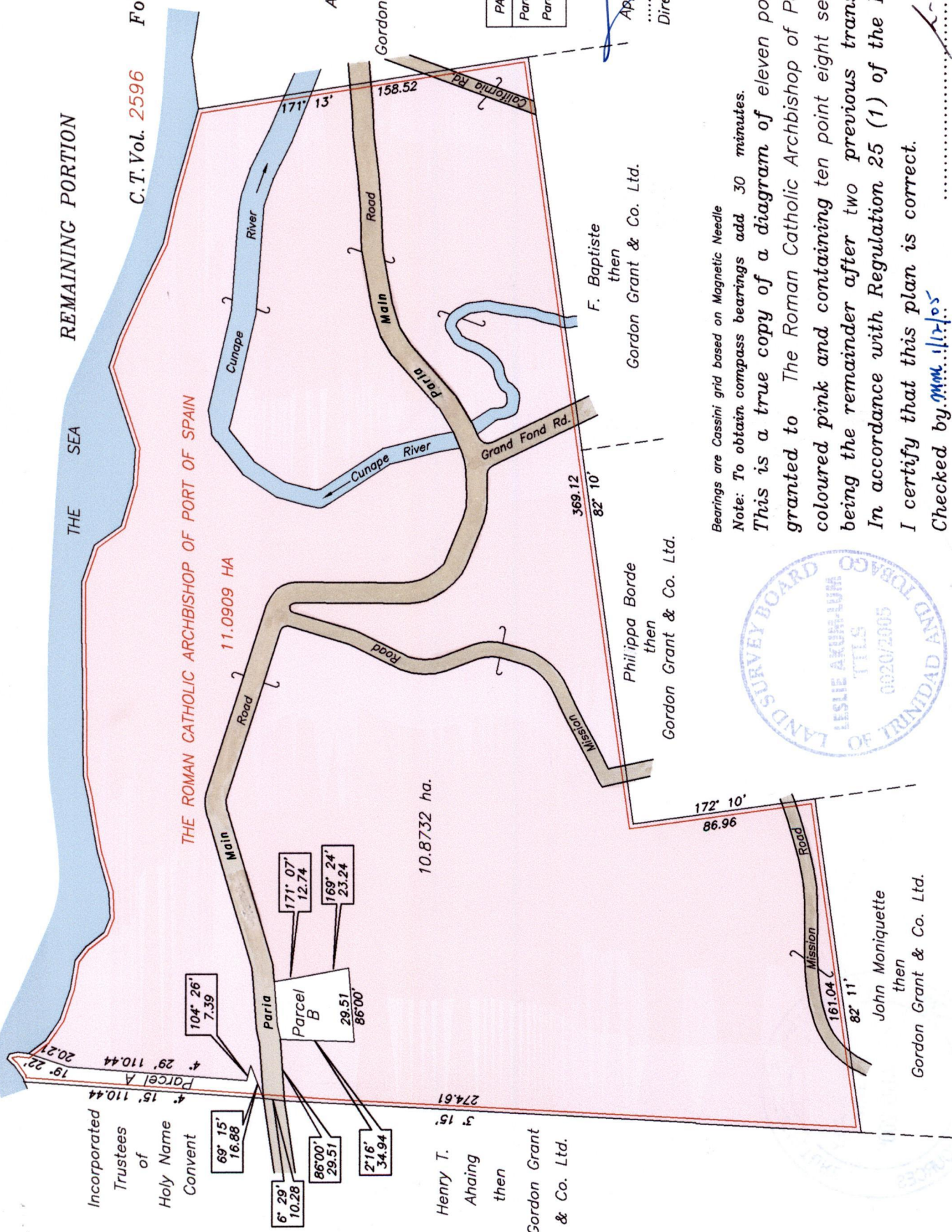
REMAINING PORTION

THE SEA

THE ROMAN CATHOLIC ARCHBISHOP OF PORT OF SPAIN

11.0909 HA

10.8732 ha.



PARCEL	AREA	NAME	CT. Vol./Fol.
Parcel A	1124.4m <sup>2</sup>	Phyllis Teresa De Four	4117/119
Parcel B	1052.5m <sup>2</sup>	Clementine Gomes & Others	4173/305

Approved  
*[Signature]*  
 Director of Surveys  
 2005.12.12

SCALE 1/2500

Distances are in metres

Bearings are Cassini grid based on Magnetic Needle  
 Note: To obtain compass bearings add 30 minutes.

This is a true copy of a diagram of eleven point zero nine nine hectares originally granted to The Roman Catholic Archbishop of Port of Spain, showing a portion coloured pink and containing ten point eight seven three two hectares being the remainder after two previous transfers of other portions of the land. In accordance with Regulation 25 (1) of the Land Surveyors' Regulations 1998, I certify that this plan is correct.



John Moniquette  
 then  
 Gordon Grant & Co. Ltd.

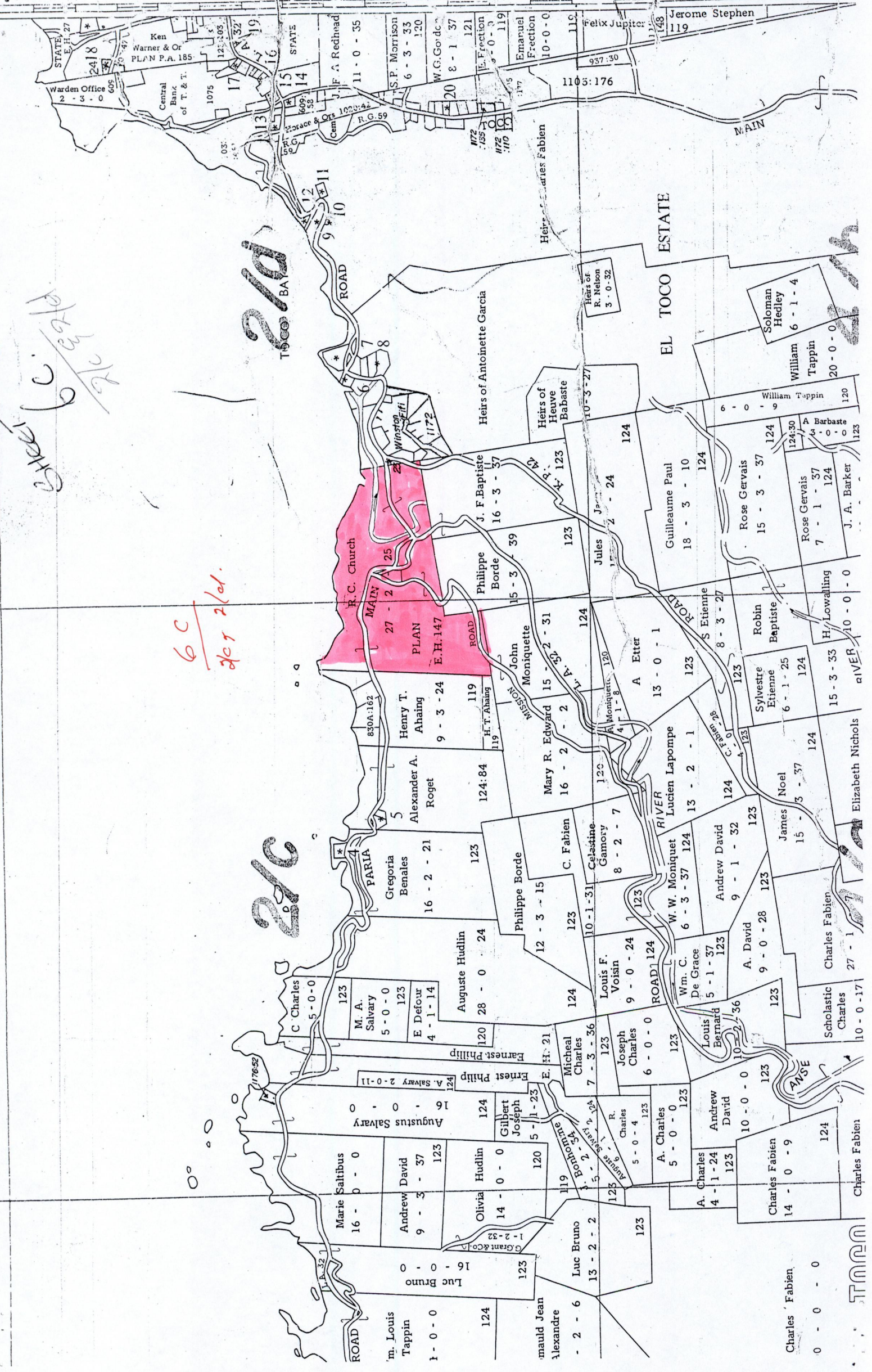
Checked by *[Signature]*  
 Entered.....  
 Trinidad & Tobago Land Surveyor  
 15th July 2005

Sheet 6C  
267 26d

6C  
267 26d.

26d

26c



T.M.M.