

Process ED#81113

Cadastral Sheet C.22.J. ^{25F}/_{2/a}

A N^o 4603

Ward of Manzanilla

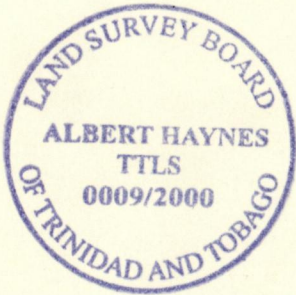
Vol. 4893 fol. 343

County of St. Andrew .

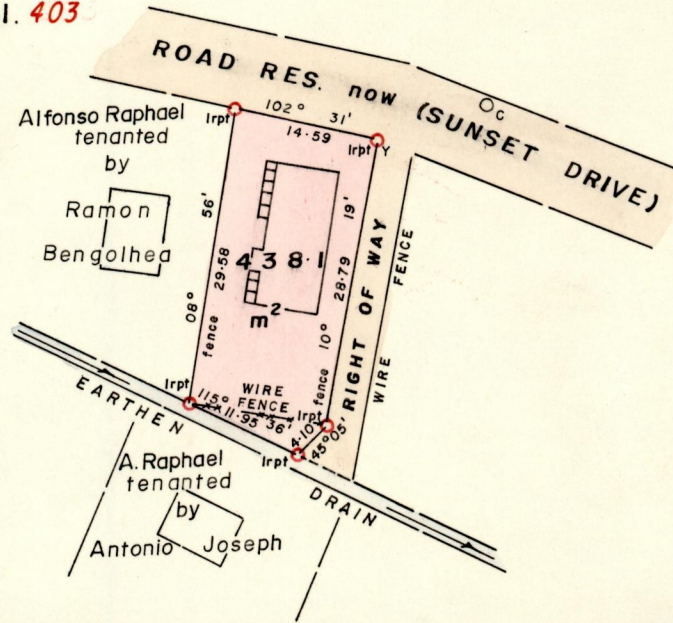
R. P. O. Vol. 7 Fol. 547

C. T. Vol. 3026 Fol. 403

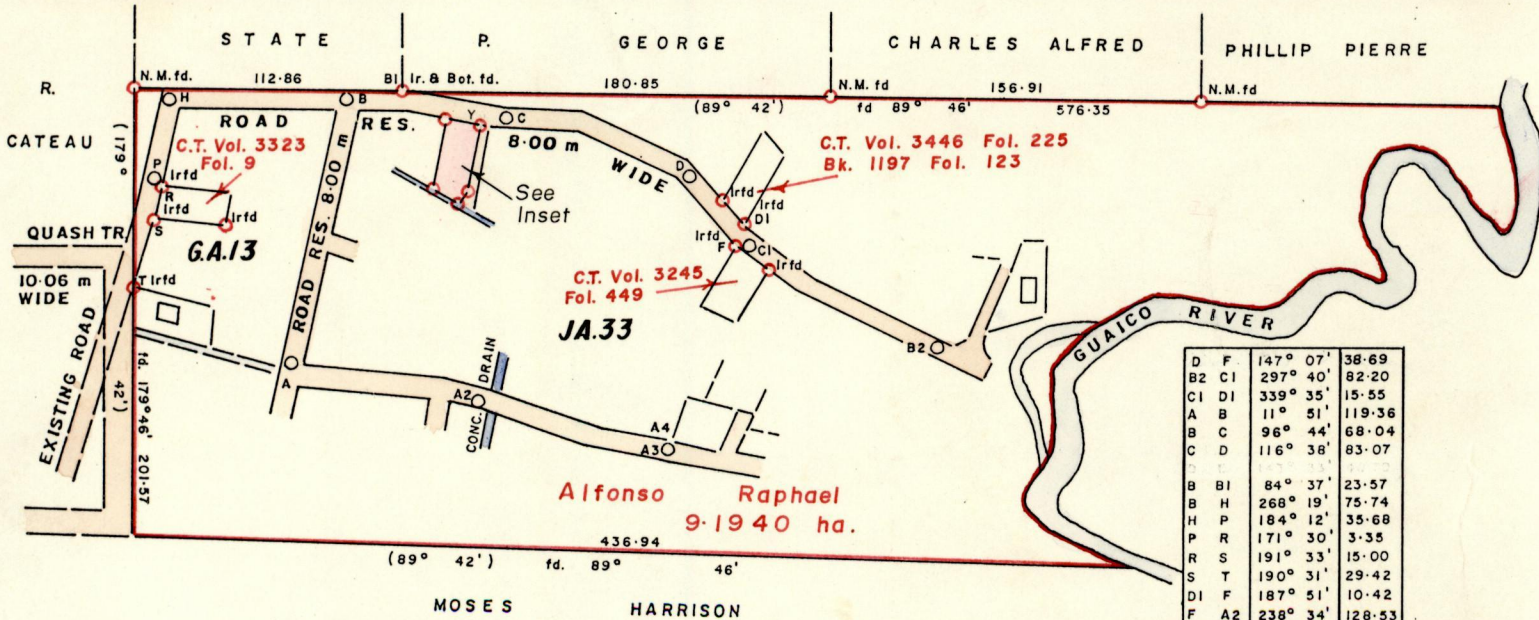
INSET



SCALE 1:750
Distances are in metres



GIN Cassini



D	F	147° 07'	38.69
B2	C1	297° 40'	82.20
C1	D1	339° 35'	15.55
A	B	11° 51'	119.36
B	C	96° 44'	68.04
C	D	116° 38'	83.07
B	B1	84° 37'	23.57
B	H	268° 19'	75.74
H	P	184° 12'	35.68
P	R	171° 30'	3.35
R	S	191° 33'	15.00
S	T	190° 31'	29.42
D1	F	187° 51'	10.42
F	A2	238° 34'	128.53
A2	A3	101° 38'	81.98
A3	A4	15° 48'	2.88
Y	C	73° 08'	11.44

Approved *[Signature]*
Director of Surveys of
2007.07.04

Carl Austin

SCALE 1:3168 (4 chains)

Note: To obtain compass bearing subtract minutes Distances are in metres .

PLAN of a Parcel of land coloured pink in the Ward of Manzanilla
Containing four hundred and thirty eight point one square metres .

Surveyed by me, with due authority, in April, 2000 for Allan Austin .
In accordance with rule 25 (I) of the Land Surveyors Regulations 1998, I certify that this plan is correct .

Checked by *[Signature]* 10.06.20
Trinidad & Tobago

Entered on *[Signature]* 02.02.2015 Land Surveyor *[Signature]* 29 April 2000..