

Process *LD#81078*

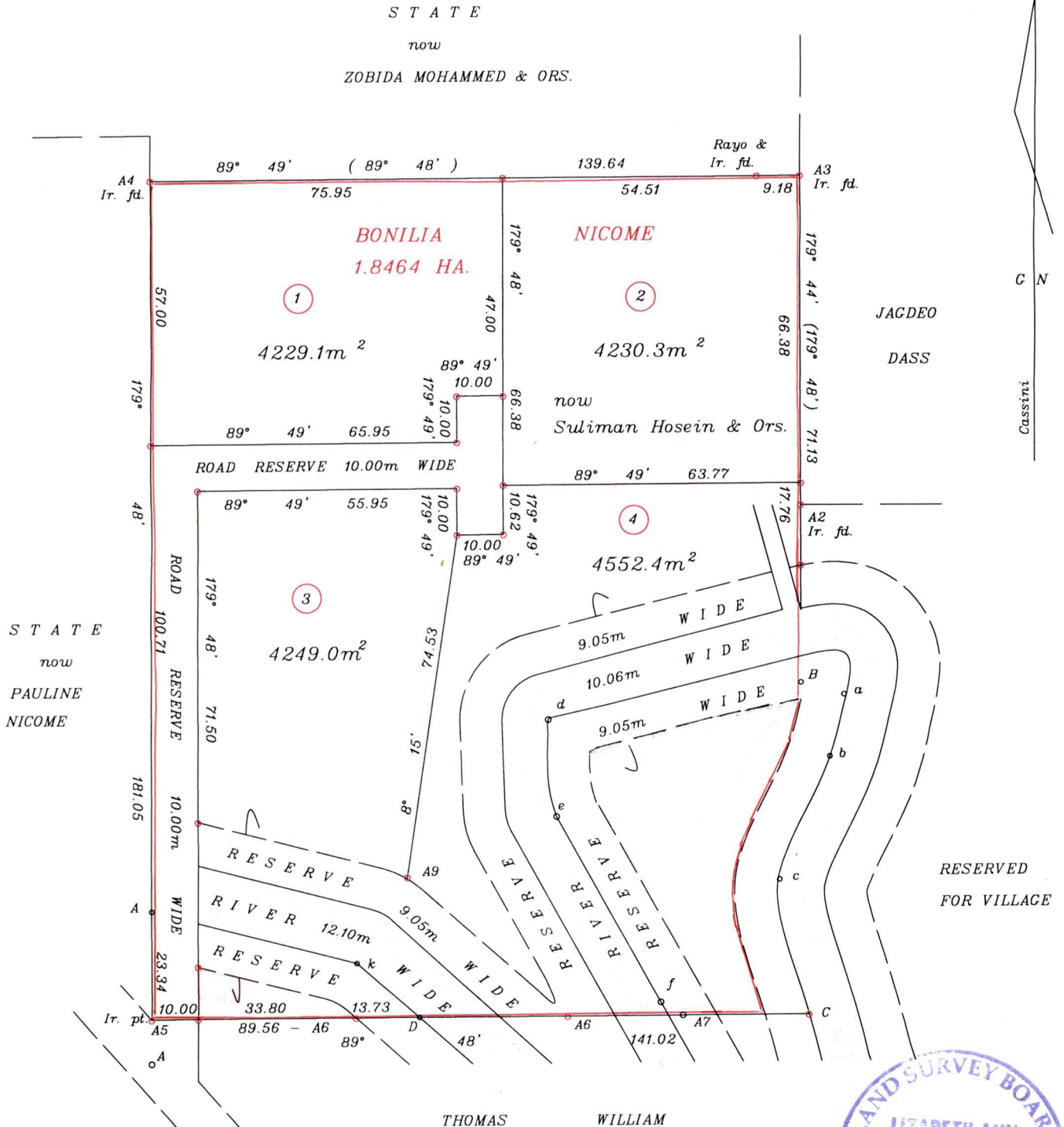
R.P.O. Vol. 153 Fol. 455
C.T. Vol. Fol.

Cadastral Sheet E.12.I., 45C
1/d

Ward of Turure
County of St. Andrew

VOL 4854 Fol. 85

VIDE Bk. 185 fol. 131
Bk. 1157 fol. 66



S T A T E
now
PAULINE
NICOME

THOMAS WILLIAM

Approved

[Signature]
Director of Surveys

2003.12.22

Bearings are Cassini Grid based on Solar Observations



SCALE 1 : 1250

Distances are in metres

denotes Ir. put unless otherwise stated

Plan of 4 Parcels of land coloured pink in the Ward of Turure
Containing together one point seven two six one hectares

Surveyed by me, with due authority, in Oct.2001 and July 2002

In accordance with Regulation 25(1) of the Land Surveyors' Regulations 1998,
I certify that this plan is correct.

Checked by *[Signature]*

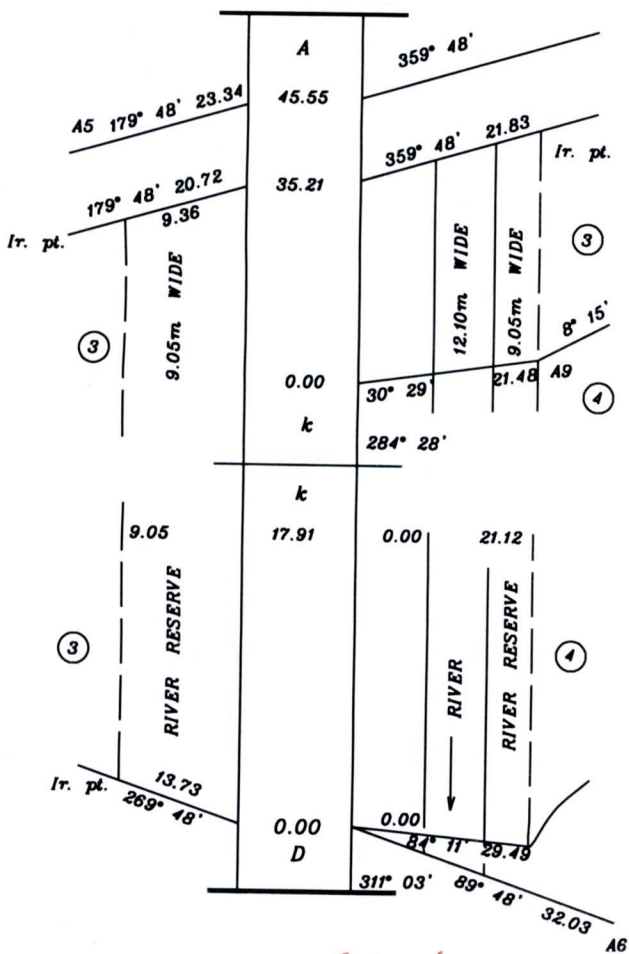
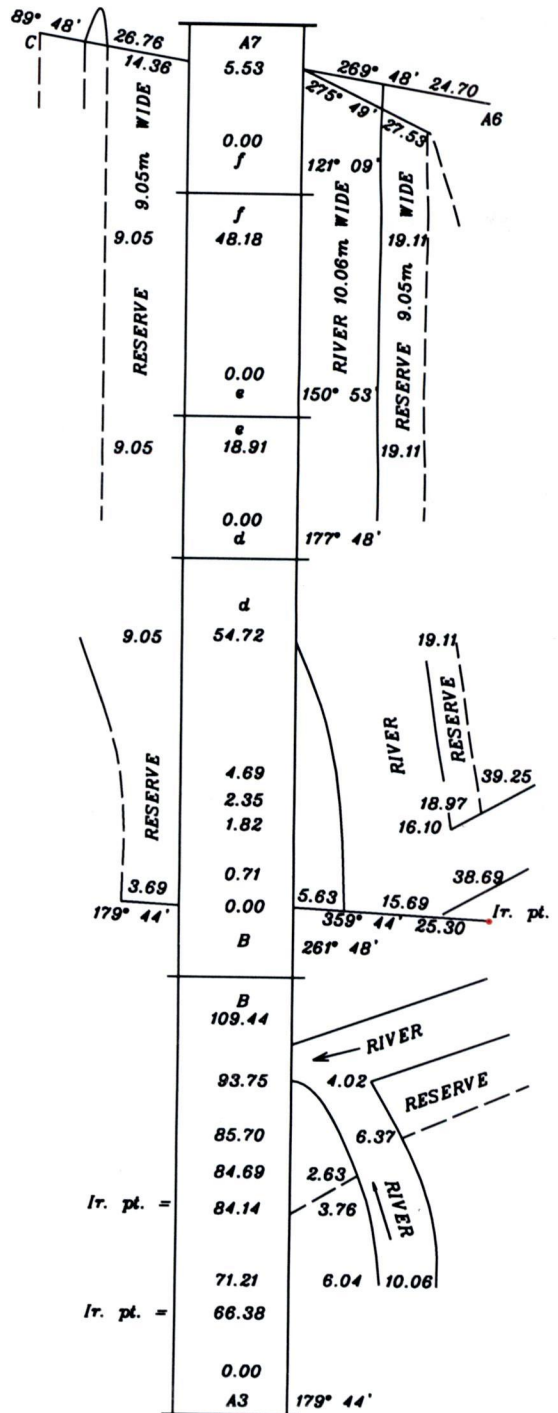
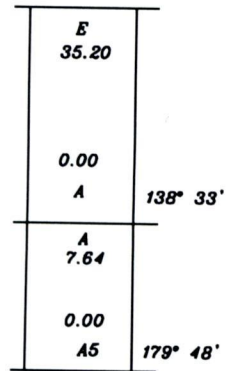
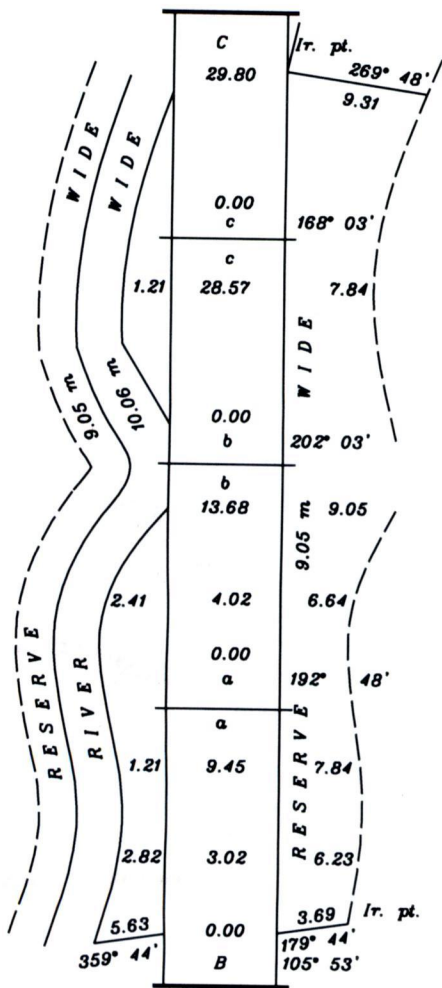
Elizabeth-Ann Hamilton

Entered

Trinidad & Tobago Land Surveyor

December 13

2002



1. VOL. 485A FOL. 95 NIZAMUDDIN MOTALIB HOSEIN & ORS.

2. VOL. 485A FOL. 97 RAFFICK HOSEIN

3. VOL. 485A FOL. 99 RAZACK, NIZAMUDDIN HOSEIN & ORS.

4. VOL. 485A FOL. 101 MOTALIB HOSEIN & ORS.

10 DEC 2003
Lands and
Surveys
Division

1279/256