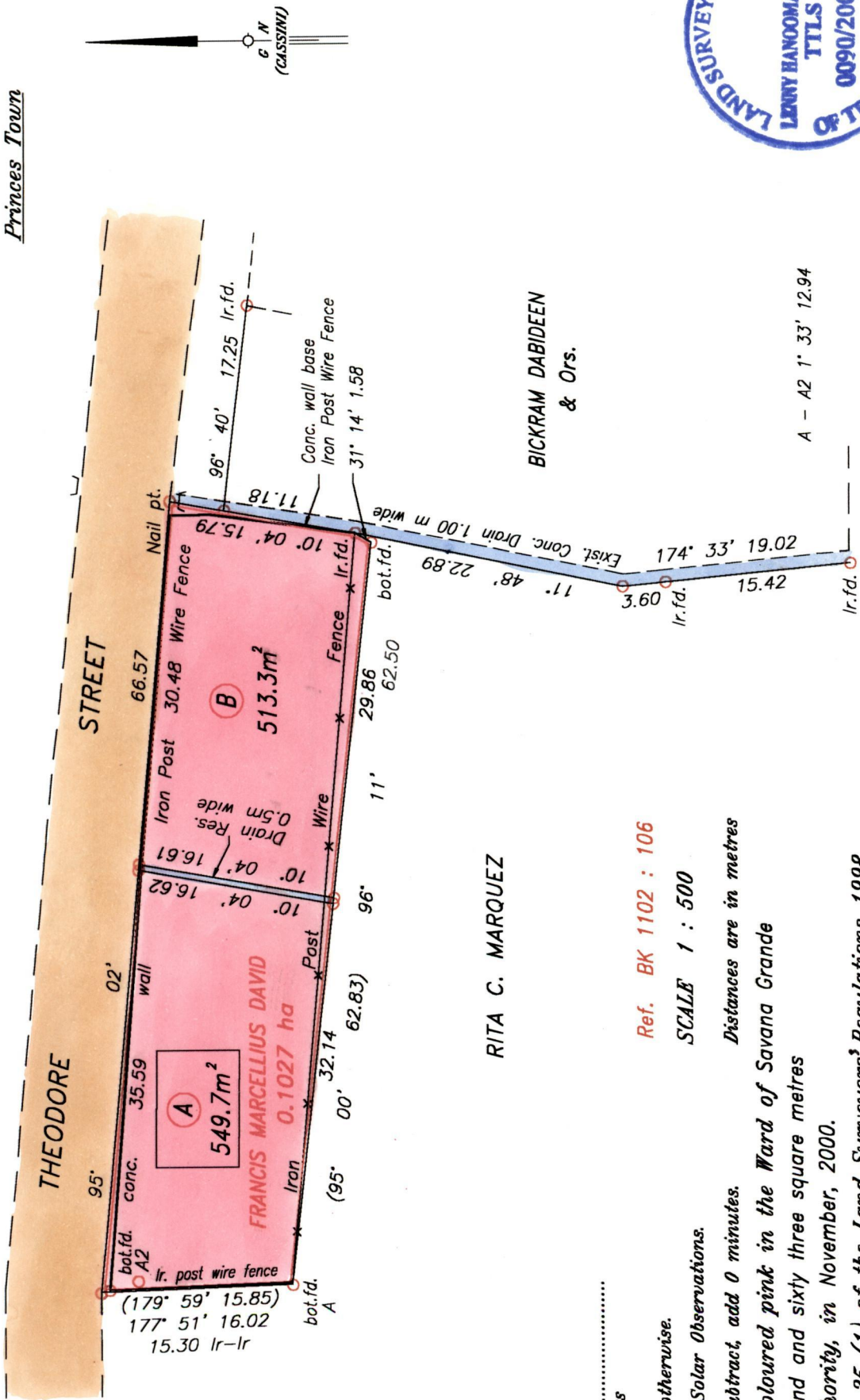


RPO Vol. 1604
 CT. Vol. 1604

Vol. 4903 fol. 35

Process SDH 81060

Ward of Savana Grande
 County of Victoria
 Cadastral Sheet (G.4.H), $\frac{54D}{4/a}$
 Princes Town



RITA C. MARQUEZ

RITA C. MARQUEZ

Approved: *[Signature]*
 Director of Surveys
 1524-3-31

○ Denotes Iron put except stated otherwise.

Bearings are Cassini Grid based on Solar Observations.

Note: To obtain compass bearing subtract, add 0 minutes.

Plan of two Parcels of land coloured pink in the Ward of Savana Grande

Containing together one thousand and sixty three square metres

Surveyed by me with due authority, in November, 2000.

In accordance with Regulation 25 (1) of the Land Surveyors' Regulations 1998,

I certify that this plan is correct.

Checked by *[Signature]*

[Signature]
 Trinidad & Tobago, Land Surveyor.....2002

Entered on *[Signature]*
 29.10.2014

Ref. BK 1102 : 106

SCALE 1 : 500

Distances are in metres



501

1971



A -

B - Vol. 4903 fol. 41 Paula David

- 1 MAY 2002
Lands and
Surveys
Division

1289/127