

143

R.P.O. Vol. 77 Fol. 475  
C.T. Vol. 2577 Fol. 201  
Vol. 4774 Fol. 3

Line	Deg	Min	Dist
p-q	53	17	9.21
q-r	65	40	7.23
r-s	66	39	6.39
s-t	75	58	0.13
t-u	75	58	4.05
u-v	87	25	8.03
v-w	91	18	4.87
w-x	91	18	8.67
x-y	97	27	10.14

Access ID # 89258

See Plan G.A.244  
See Plan K.F. 2.  
See Bk. 477 : 271  
See Bk. 460 : 80

Ward of Siparia  
County of St. Patrick  
Cadastral Sheet G.17F. 73A  
2/d

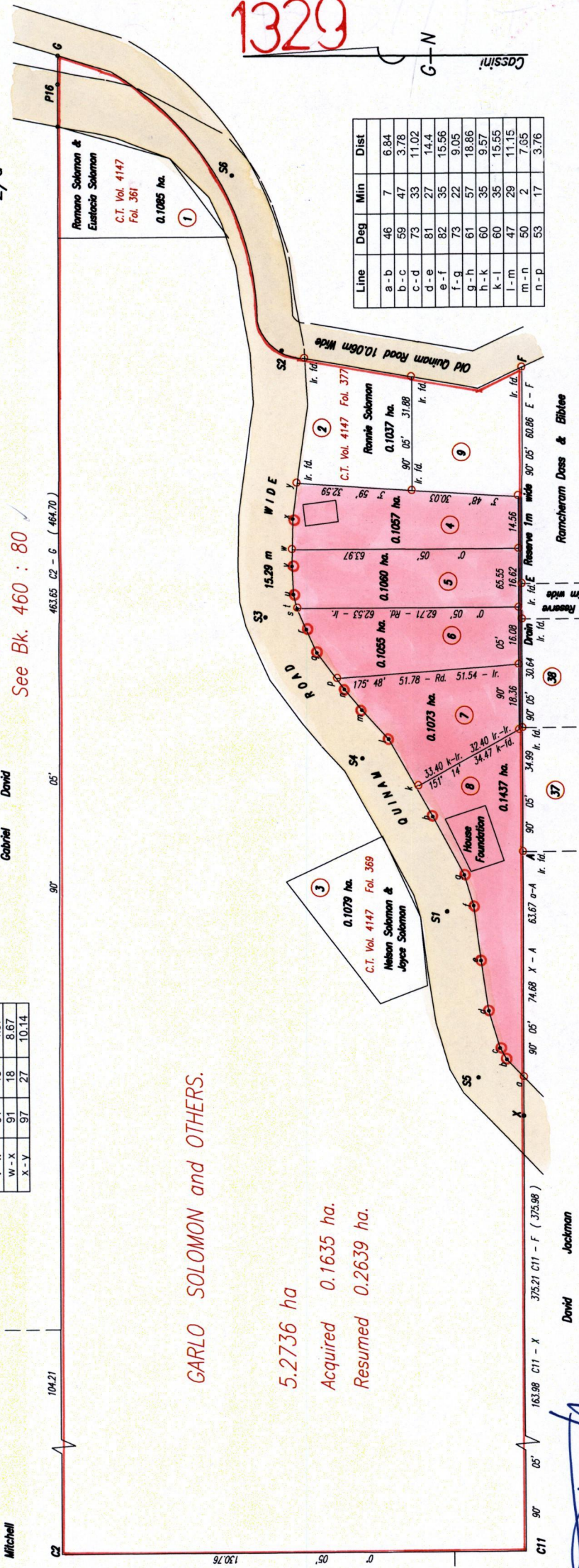
Ferdinand Mitchell  
Marie  
Juanita Jaggernath

GARLO SOLOMON and OTHERS.

5.2736 ha  
Acquired 0.1635 ha.  
Resumed 0.2639 ha.

1329

Line	Deg	Min	Dist
a-b	46	7	6.84
b-c	59	47	3.78
c-d	73	33	11.02
d-e	81	27	14.4
e-f	82	35	15.56
f-g	73	22	9.05
g-h	61	57	18.86
h-k	60	35	9.57
k-l	60	35	15.55
l-m	47	29	11.15
m-n	50	2	7.05
n-p	53	17	3.76



Approved : ...  
Director of Surveys  
2005-7-5

SCALE 1:1500

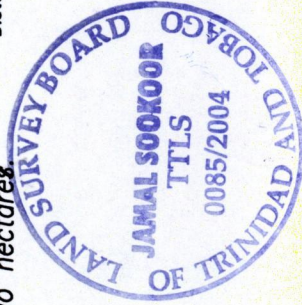
Plan of five Parcels of land coloured pink in the Ward of Siparia Containing together zero point five six eight two hectares. Surveyed by me, with due authority, in February 2004. In accordance with Regulation 25(1) of the Land Surveyors' Regulations 1998, I certify that this plan is correct.

Distances are in Metres.

Checked by M.M. 22/6/05

Entered ... 9/9/05

Trinidad & Tobago Land Surveyor 18th December .2004



143

1329



Original GA 244

Original Survey BK. 460 fol. 80

4. Vol. 4774 Fol. 9 JOHN  $\frac{1}{2}$  CHERINE SOLOMON ✓
5. Vol. 4774 Fol. 17 MICHELLE  $\frac{1}{2}$  CHRISTOPHER KISWAH
6. Vol. 4774 Fol. 25 SHELDON SOLOMON  $\frac{1}{2}$  WAHEEDA ABOOL ✓
7. Vol. 4774 Fol. 33 CATHERINE SOLOMON  $\frac{1}{2}$  FINOLA SOLOMAN ✓
8. Vol. 4774 Fol. 41 LYDIA C. SOLOMON WOODLEY  $\frac{1}{2}$  MARC WOODLEY



1358/14