

1328

1364

4

99

Process Jd# 74255

Vol. 4612 fol. 151

R.P.O. Vol. 139

C.T. Vol. 3016

REMAINING PORTION

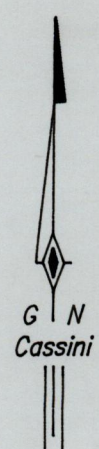
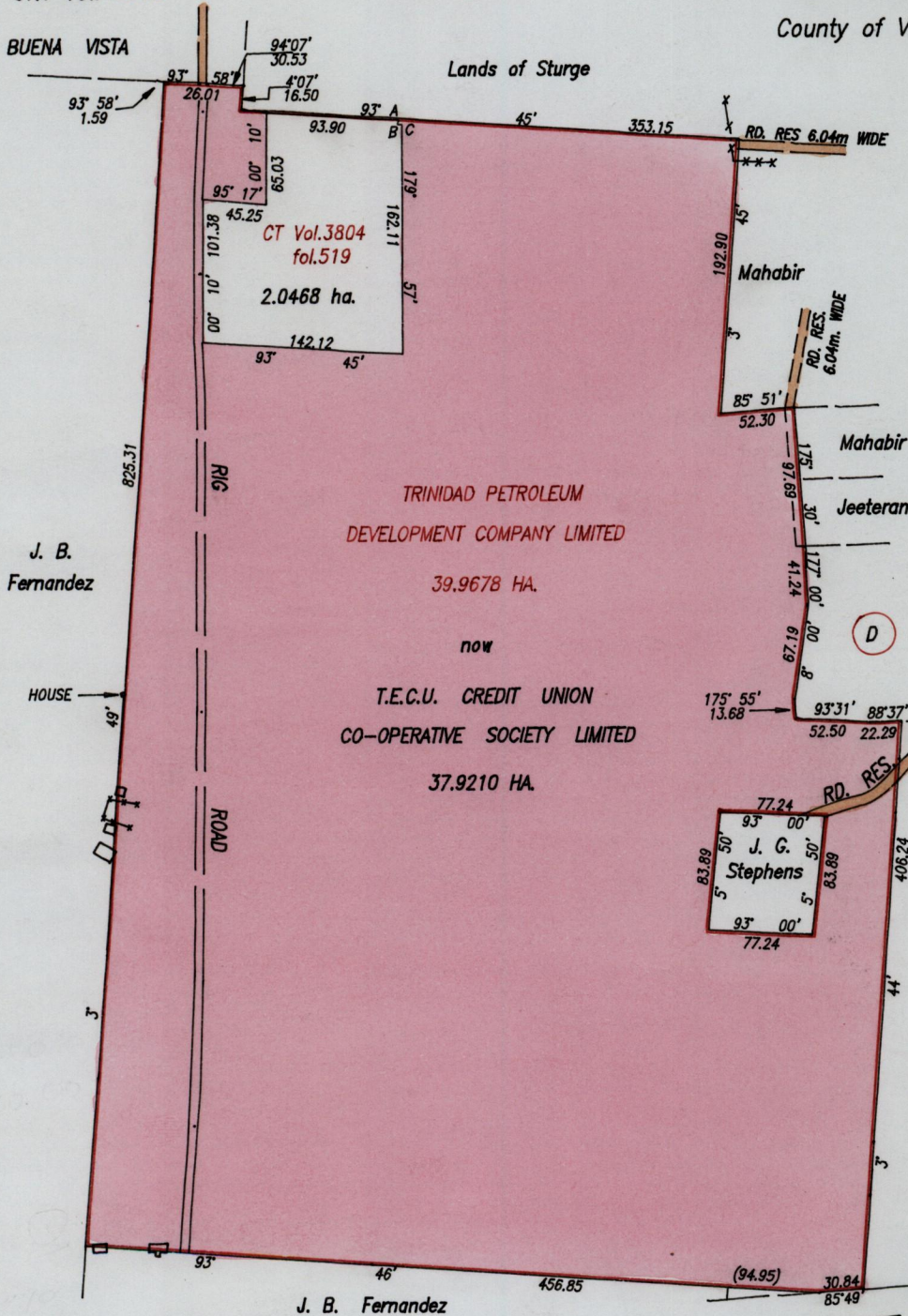
Fol. 69

Fol. 303

Cadastral Sheet D.22.B. 43E F
3/c

Ward of Pointe-a-Pierre

County of Victoria

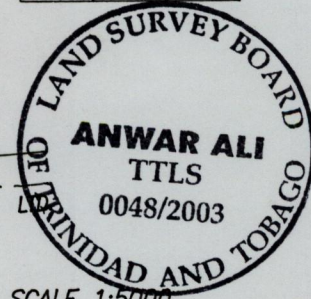


Vide Plans F. A. 67
E. I. 13
Vide Books 1179 fol.93
1233 fol.114

Orig BK 1179-93

Denotes
x-x-x Wire Fence

A - B	191' 15"	3.23
B - C	92' 13"	3.08



SCALE 1:5000

Approved *[Signature]*
Director of Surveys 2003-5-8

Bearings are based on Solar Observations
This is a true copy of a diagram of thirty nine point seven one eight nine hectares, originally transferred to Trinidad Petroleum Dev. Co. Ltd. showing a portion coloured pink containing thirty seven point nine two one zero hectares being the remainder after one previous transfer, of another portion of the land. In accordance with Regulation 25 (1) of the Land Surveyors' Regulations I certify that this plan is correct.

Distances are in metres

Ocean View Development Ltd.

Checked by *[Signature]* 2-5-03

Entered *[Signature]* 11-11-2003

Trinidad & Tobago Land Surveyor
Path = ADA001 D:\TECU\Rem-portion.dwg

[Signature]
24/04/2003