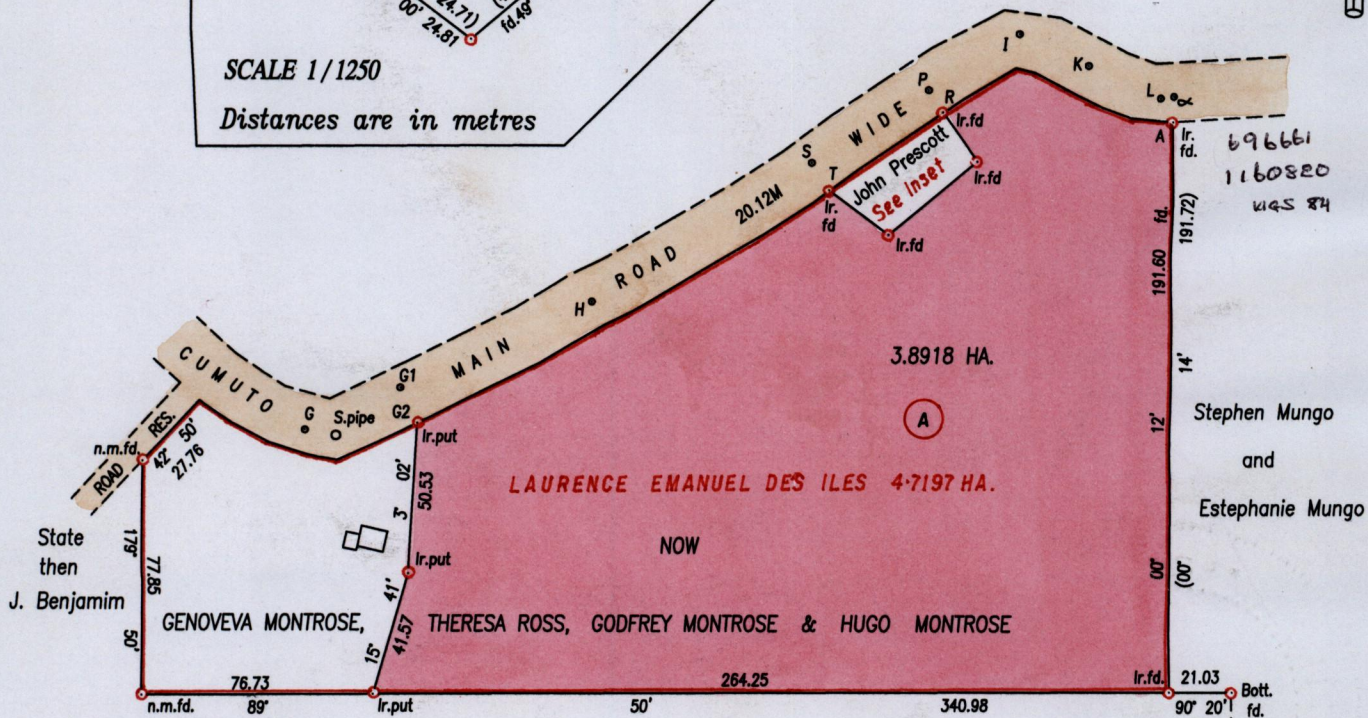
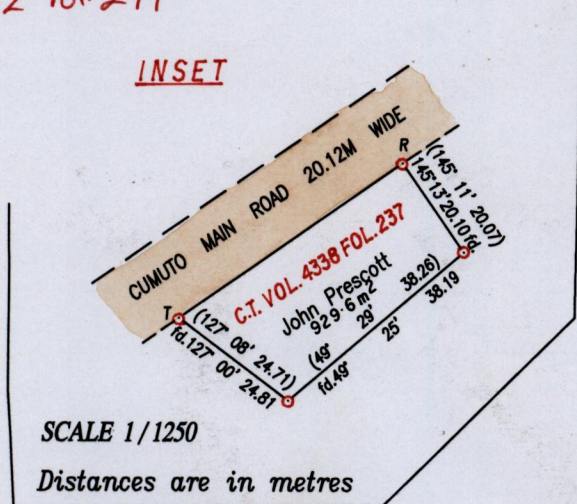
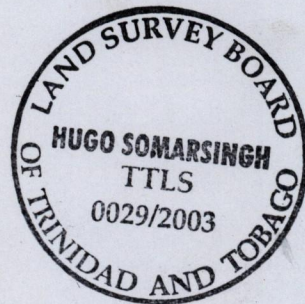


Process SD#74226  
 R.P.O. VOL. 670 FOL. 51  
 Vide Bk. 627 Fol. 65  
 S.O. No. 95/20

1328

Ward of Tamana  
 County of St. Andrew  
 Cadastral Sheet E.6.I. 35D  
 2/6

Vol. 4552 fol. 299



Fabricia de Matas  
 now  
 des Iles

LEGEND

| Sta.      | Bearings | Dist. | Sta.  | Bearings | Dist. |
|-----------|----------|-------|-------|----------|-------|
| G - G1    | 65° 37'  | 34.76 | R - P | 327° 27' | 8.77  |
| G1 - G2   | 155° 37' | 13.16 | P - I | 57° 27'  | 35.17 |
| G2 - S.P. | 261° 01' | 27.17 | I - K | 114° 28' | 25.27 |
| G1 - H    | 65° 37'  | 69.68 | K - L | 113° 53' | 26.35 |
| H - S     | 57° 27'  | 86.91 | L - α | 82° 18'  | 4.47  |
| S - T     | 147° 27' | 10.94 | α - A | 179° 50' | 8.61  |

Approved *[Signature]*  
 Director of Surveys  
 2003.12.02

Simon Tidd  
 SCALE 1/2500  
 Distances are in metres

Bearings are Cassini Grid based on Solar Observations  
 PLAN of a parcel of land coloured pink in the Ward of Tamana  
 Containing three point eight nine one eight hectares  
 Surveyed by me with due authority, on April 19th, 2003.

"In accordance with Regulation 25 (1) of The Land Surveyors' Regulations 1998,  
 I certify that this plan is correct."

Checked by *[Signature]*

*[Signature]*

Entered on CHS 03-12-2003

Trinidad & Tobago Land Surveyor. 28th April 2003