

See S.O. No. 501/17

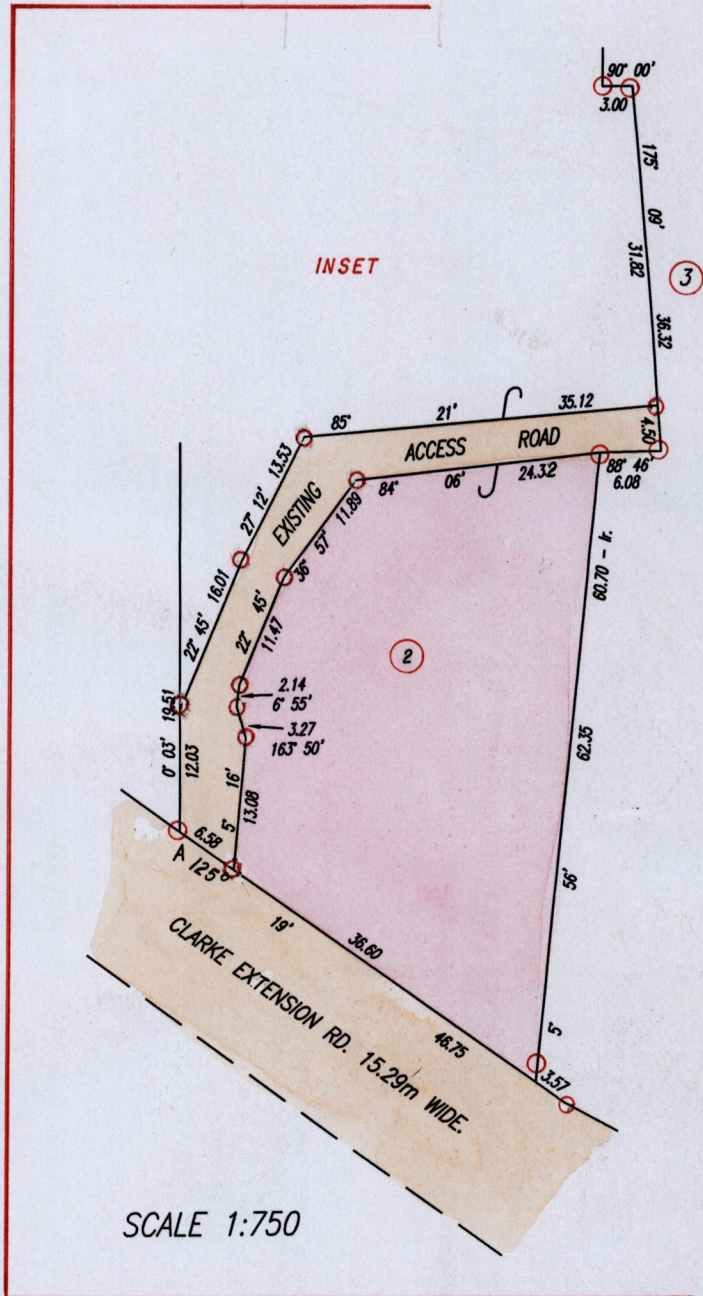
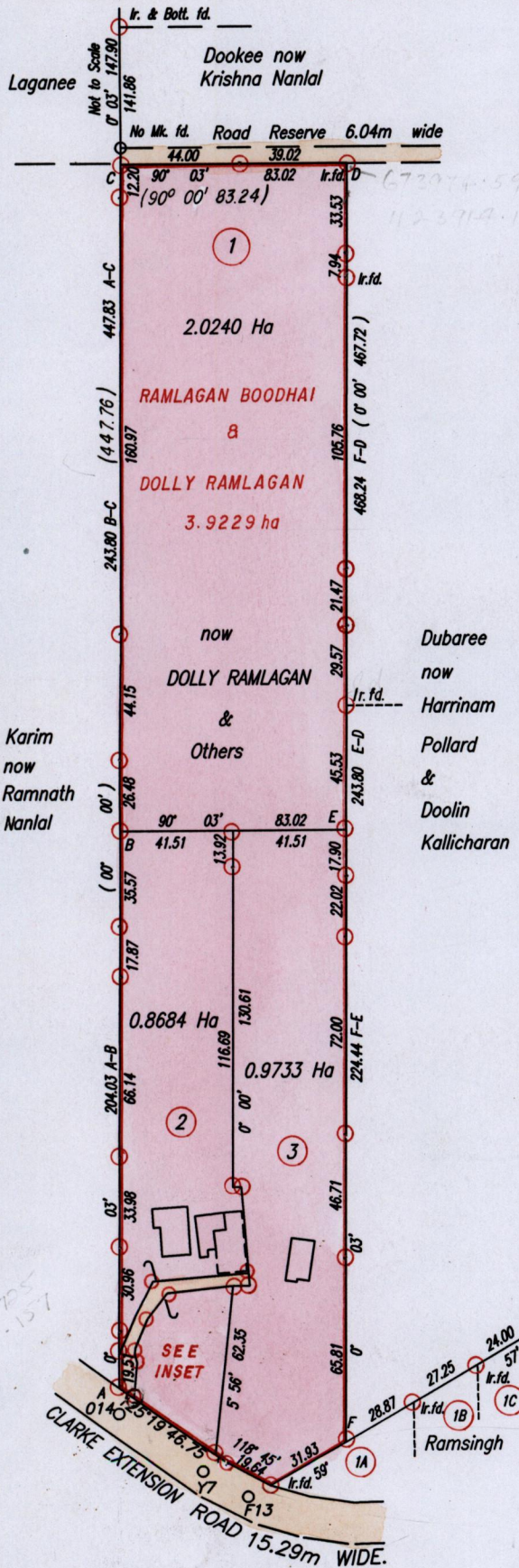
See Field Bk. 172 fol. 72

See Bk. 430 fol. 59, 129

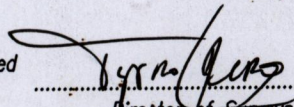
See Bk. 1197 fol. 183

See Bk. 1238 fol. 132

VOL. A 645 FOL. 185



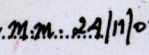
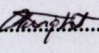
A - 014 = 00° 03' 9.46
 014 - Y7 = 125° 10' 41.74
 Y7 - F13 = 118° 45' 14.89

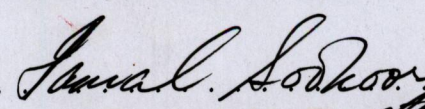
Approved 
 Director of Surveys.
 2004-3-31

SCALE 1:2500
 Distances are in Metres
 Bearings are based on Solar Observations

○ Denotes Iron put except otherwise stated
 Plan of three Parcels of land coloured pink in the Ward of Siparia
 Containing together three point eight six five seven hectares.
 Surveyed by me, with due authority, in June, 2002.
 In accordance with Regulation 25(1) of the Land Surveyors' Regulations 1998,
 I certify that this plan is correct.



Checked by:  21/11/03
 Entered on: 


 Trinidad & Tobago Land Surveyor 21st December 2002

1. VOL. 4645 FOL. 191 RAMNATH & DORA RAMLAGAN
2. VOL. 4645 FOL. 207 DOLLY & RAMLAGAN BOODHAI
3. VOL. 4645 FOL. 199 RAMNATH & DORA RAMLAGAN

17 DEC 2002
Lands and
Surveys
Division

1289/129