

Process ID# 74232

1328

54

R.P.O. Vol. 208 Fol. 607

Cadastral Sheet 35D D.10. J. 1/c

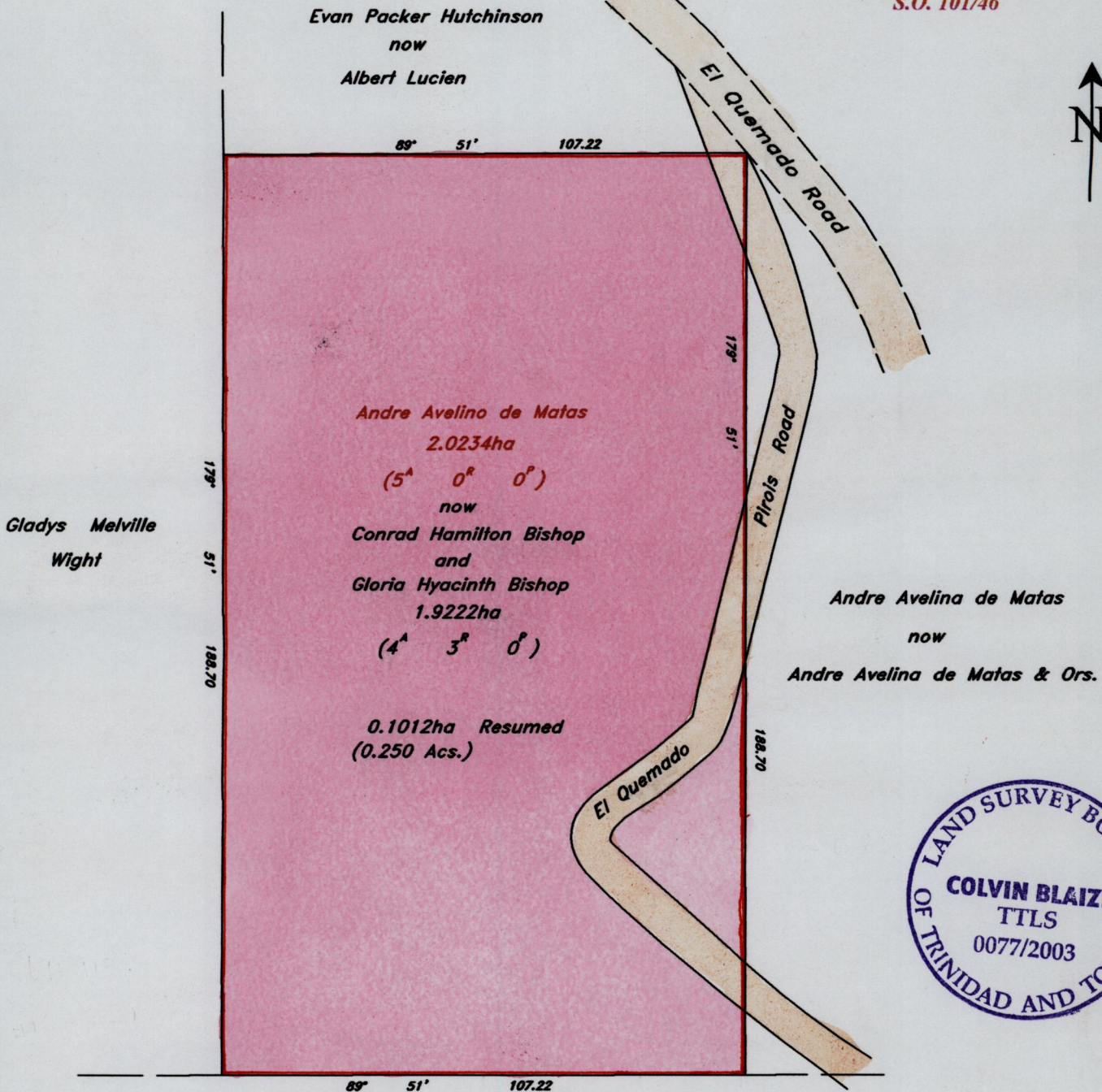
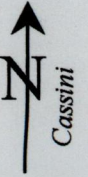
C.T. Vol. Fol.

Ward of San Rafael

County of St. George

VOL. 4602 FOL. 253 REMAINING PORTION PLAN

VIDE Plan C.F.63 S.O. 101/46



Approved *[Signature]*
Director of Surveys
2004.2.4

Andre Avelina de Matas

ANDRE AVELINO DE MATAS

Scale 1 / 1250
Distances are in metres

This is a true copy of a diagram of **two point zero two three four hectares** originally transferred to **Andres Avelino de Matas** shewing a portion of land coloured pink and containing **one point nine two two two hectares** being the remainder after **One** previous resumption of another portion of the land. In accordance with Regulation 25(1) of the Land Surveyors' Regulations 1998, I certify that this plan is correct.

Checked by

Entered on *[Signature]* CHS 04.12.2013

[Signature]
Trinidad & Tobago Land Surveyor

18th July, 2003