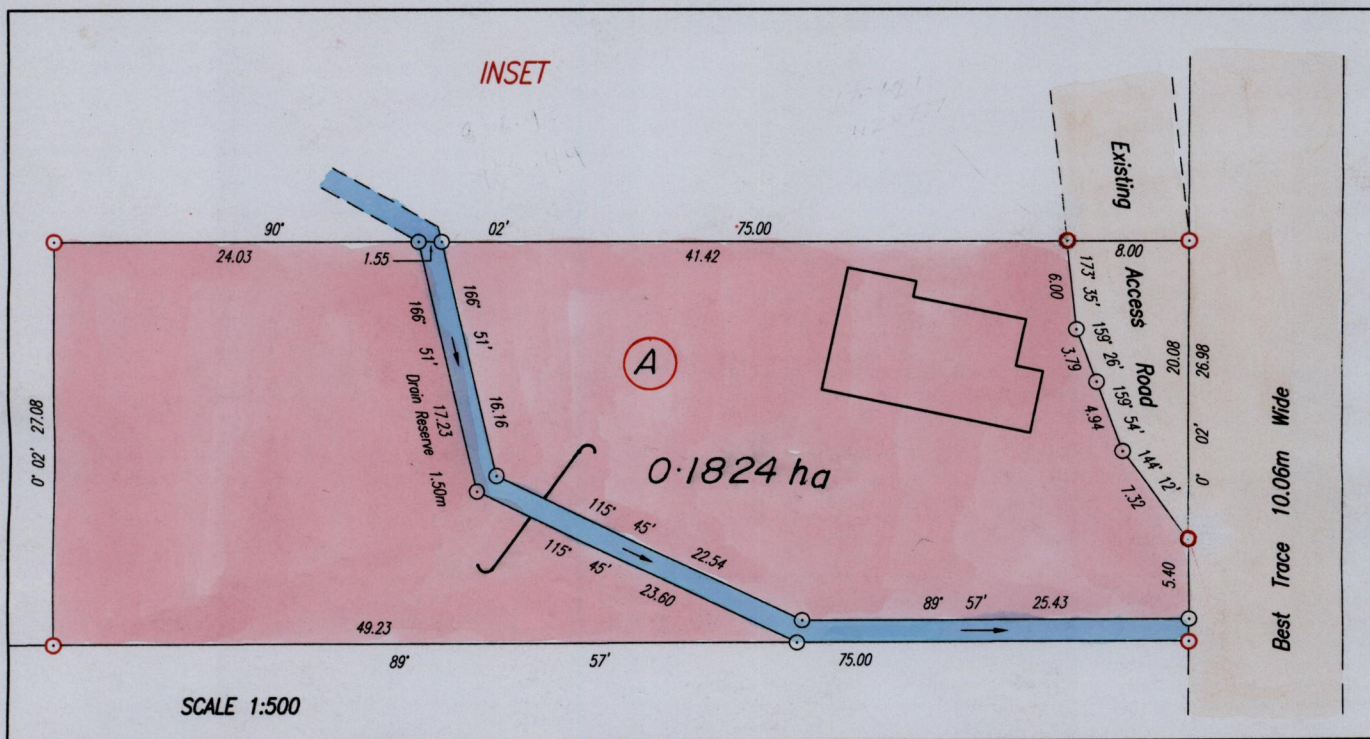
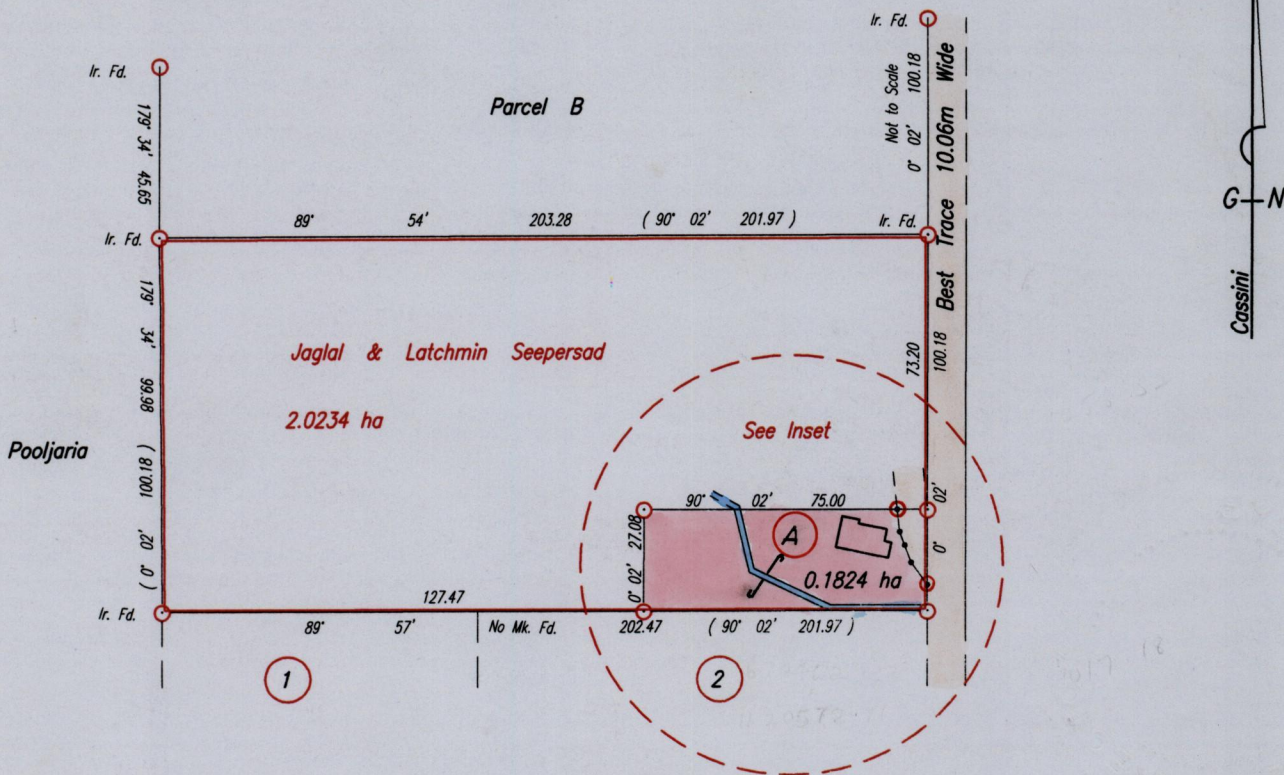


Process *LD# 75500*  
 R.P.O. Vol. 124 Fol. 41  
 C.T. Vol. 2006 Fol. 253  
 Vol. 4625 Fol. 401  
 Bk. 1005 fol. 51 Original

1328

53

Ward of Siparia  
 County of St. Patrick  
 Cadastral Sheet G.18B.  $\frac{73C}{1/d}$



Approved : *[Signature]*  
 Director of Surveys  
 2004.2.4

MARINE & SAVITRI JAGLAL

SCALE 1:2000

o denotes iron put except otherwise stated.  
 Bearings are based on solar observations.

Distances are in Metres

Plan of a Parcel of land coloured pink in the Ward of Siparia

Containing zero point one eight two four hectares.

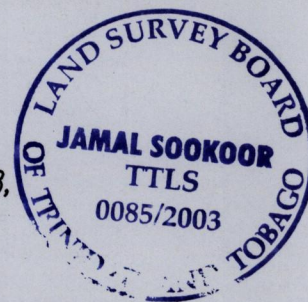
Surveyed by me, with due authority, in June 2001.

In accordance with Regulation 25(1) of the Land Surveyors' Regulations 1998,

I certify that this plan is correct.

Checked by *[Signature]*

*[Signature]*



Entered *[Signature]*

Trinidad & Tobago Land Surveyor 13th February 2003