

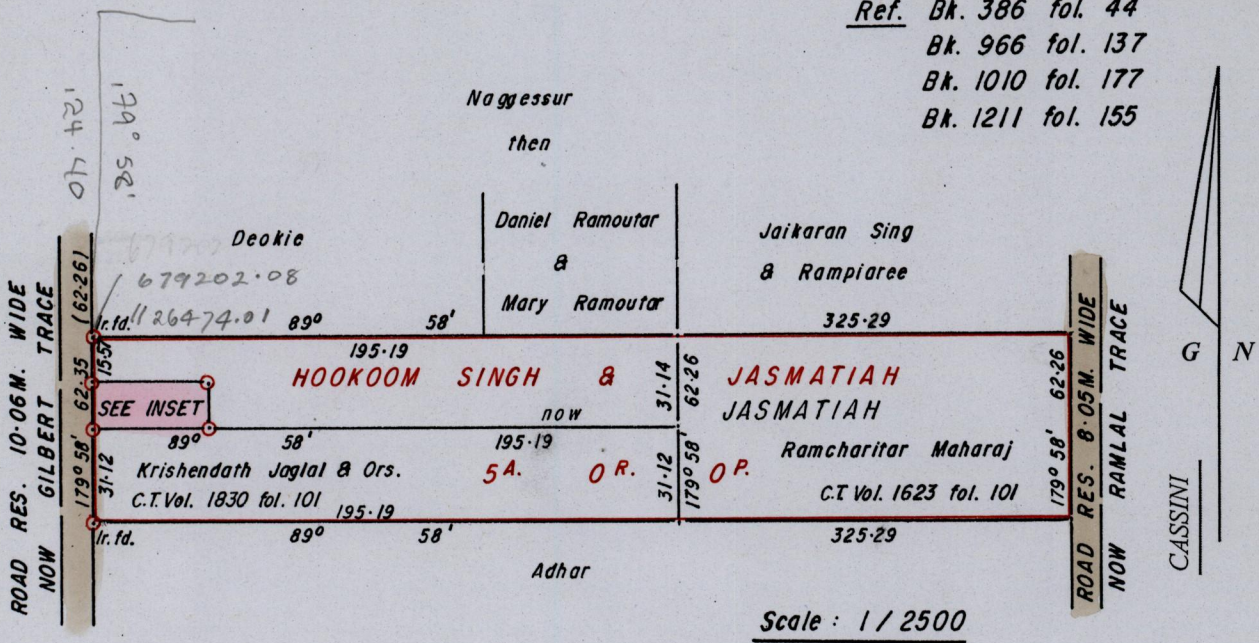
Process ID# 75438

R.P.O. Vol. 431
C.T. Vol. 1326

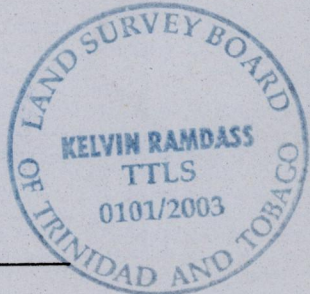
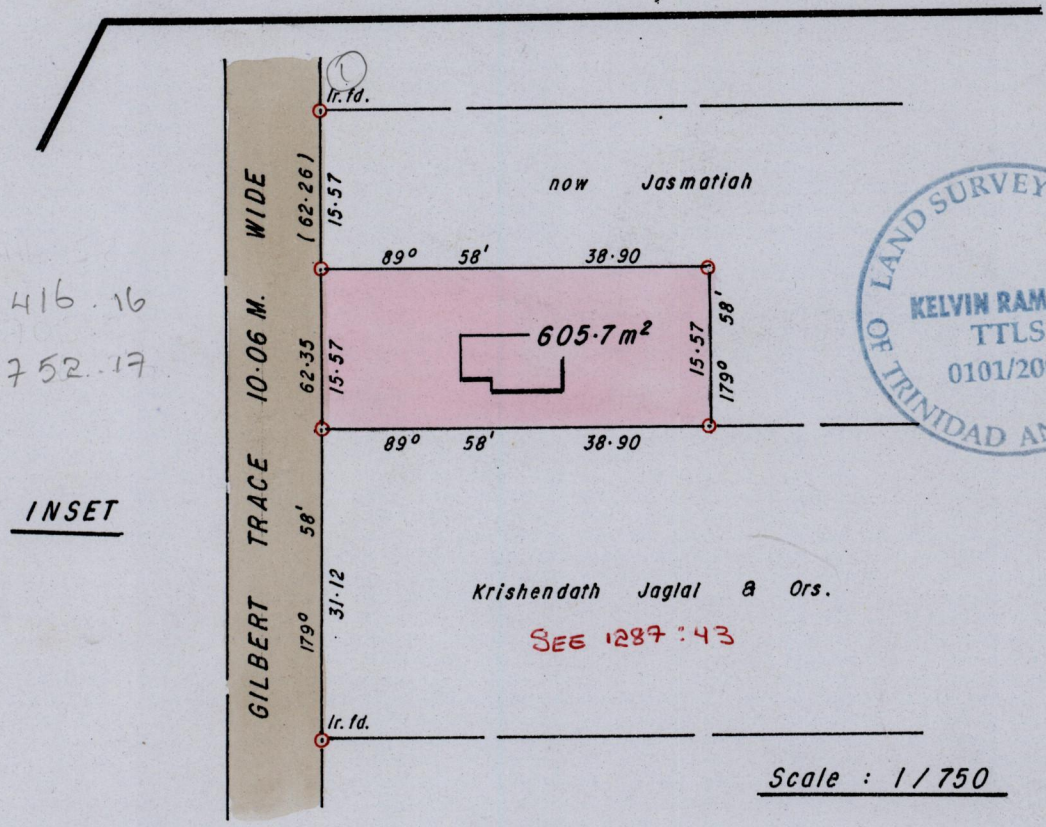
Fol. 17
Fol. 267

Ward of Savana Grande
County of Victoria
Cadastral Sheet G.14.C.&D., 64D
2/b

Ref. Bk. 386 fol. 44
Bk. 966 fol. 137
Bk. 1010 fol. 177
Bk. 1211 fol. 155



679416.16
1126752.17



Approved *[Signature]*
Director of Surveys
2002.3.3

EXA P. JHAGMOHAN

○ Denotes Iron put unless otherwise stated
Bearings are Cassini Grid based on Solar Obs.
SCALE 1/2500 & 1/750 (INSET)
Distances are in METRES

Note: To Obtain compass bearings add/subtract minutes

PLAN of a Parcel of land coloured PINK in the Ward of Savana Grande
Containing six hundred and five point seven square metres
Surveyed by me, with due authority, in March 2002
In accordance with Regulation 25 (1) of the Land Surveyors' Regulations 1998,
I certify that this plan is correct.

Checked by *[Signature]* 18.12.2002
Entered *[Signature]* 18.12.2002
Trinidad and Tobago Land Surveyor *[Signature]* 05/10/2003