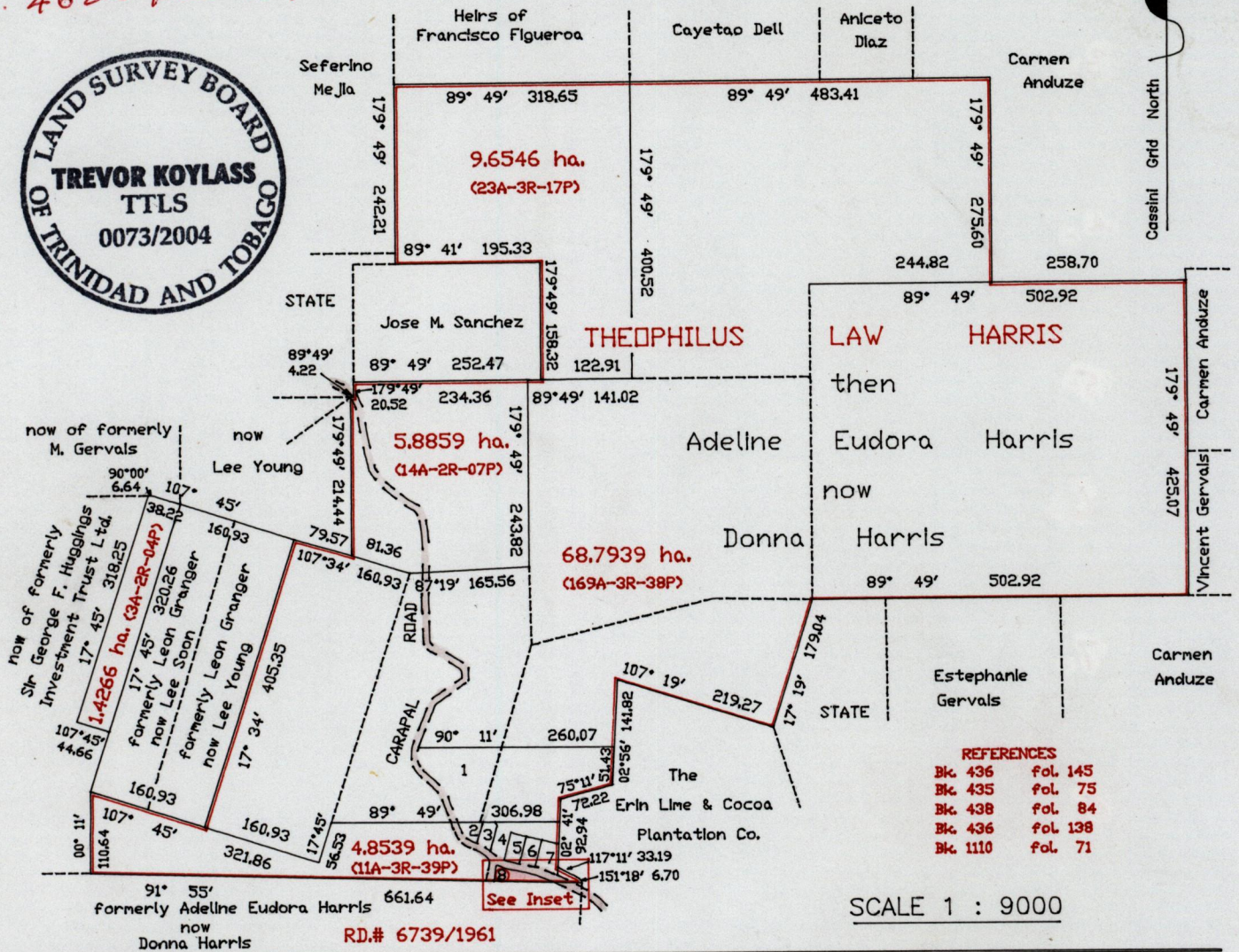
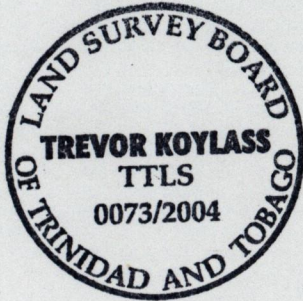


R.P.O. Vol Fol.
C.T. Vol 1638 Fol. 367
U.P.R.N. No.

Cadastral Sheet F.20.N. & O. & F.25.B 72 E
Ward of Erin
County of St. Patrick

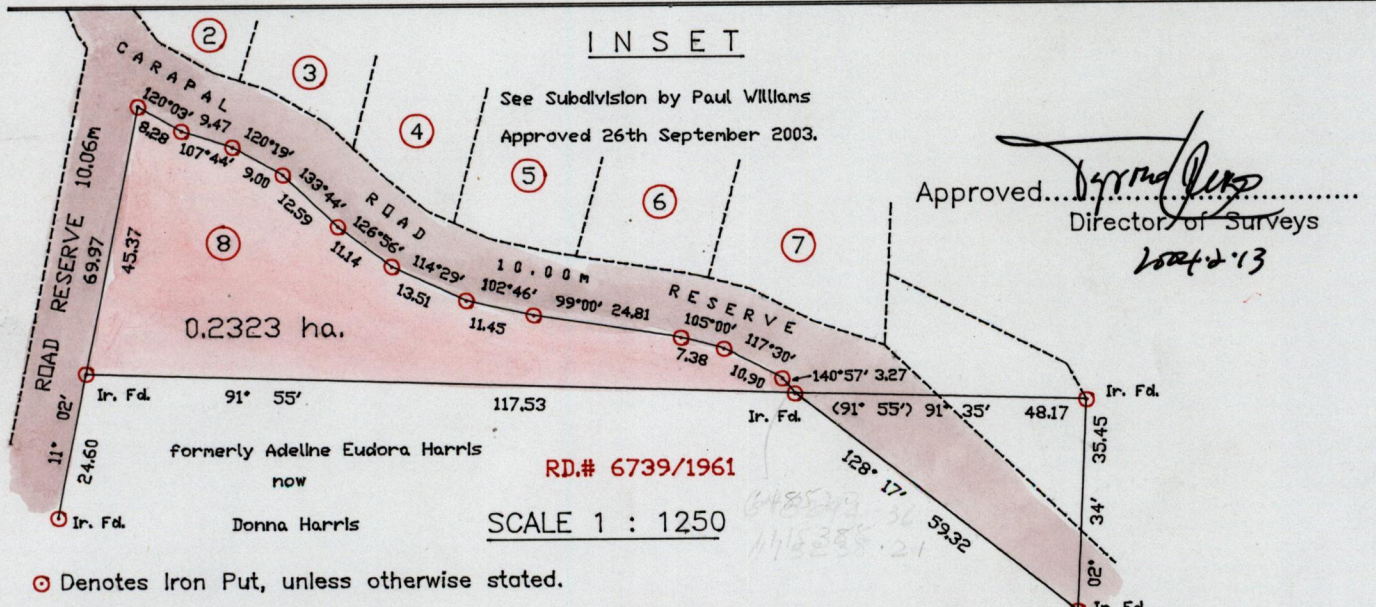
Vol. 4622 Fol. 129



REFERENCES

Bk 436	fol 145
Bk 435	fol 75
Bk 438	fol 84
Bk 436	fol 138
Bk 1110	fol 71

SCALE 1 : 9000



SCALE 1 : 1250

Approved: *[Signature]*
Director of Surveys
2004.2.13

⊙ Denotes Iron Put, unless otherwise stated.

Distances are in metres

Bearings are Cassini Grid based on Solar Observations.

PLAN of a Parcel of land coloured pink in the Ward of Erin.

Containing Zero point Two Three Two Three hectares

Survey by me, with due authority in January 2003.

In accordance with Regulation 25 (1) of the Land Surveyors' Regulations 1998,

I certify that this plan is correct.

Checked by *[Signature]*
Entered on *[Signature]*

[Signature]
Trinidad and Tobago Land Surveyor

[Signature]
2nd November 2003.

RUDOLPH & DORIANE ALEXANDER WALKER