

Process ID# 74274

R.P.O. Vol. Fol.

C.T. Vol. 4179 Fol. 237

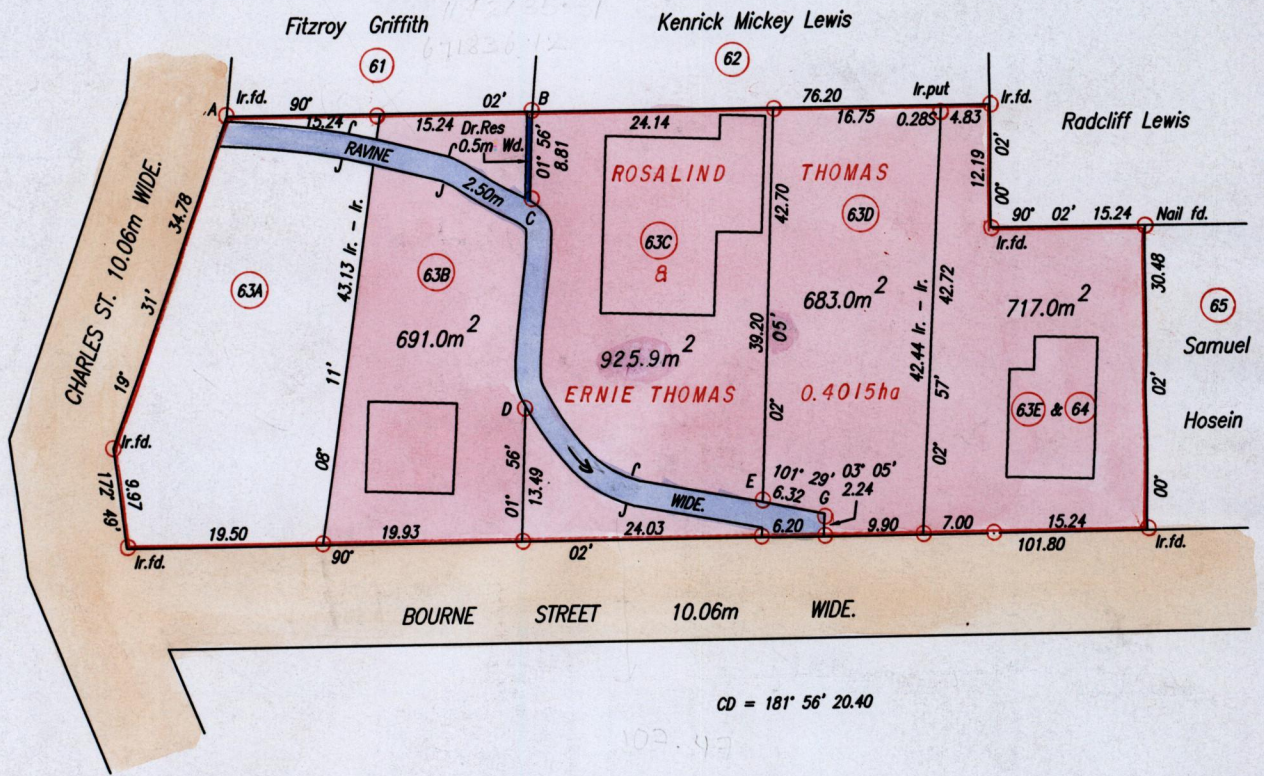
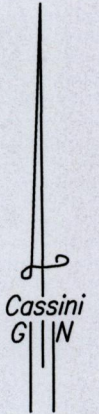
Vide Bk. 1241 fol. 39

Ward of Pointe - a - Pierre.

County of Victoria

Cadastral Sheet D.22.K. 53C  
2/c

Vol. 4627 Fol. 71



CD = 181° 56' 20.40

Approved *[Signature]*  
Director of Surveys  
2004-8-20

SCALE 1:750  
Distances are in Metres

○ Denotes Iron put except otherwise stated.  
Bearings are based on Solar Observations (Cassini Grid.)  
PLAN of 4 Parcels of land coloured pink in the Ward of Pointe - a - Pierre.  
Containing together zero point three zero one seven hectare.  
Surveyed by me, with due authority, in October 1992.  
In accordance with Regulation 25(1) of the Land Surveyors' Regulations 1998,  
I certify that this plan is correct.



Checked by *[Signature]* 2004-8-04

Entered on *[Signature]* C.M.S. 13-11-2013 Trinidad & Tobago Land Surveyor *[Signature]* 2<sup>nd</sup> April 2004  
PATH = EV700 C:\Drawings\R&E Douglas.dwg



Original Pl 1241:39

63B -

CT. VOL. 5288 FOL. 285 ROSALIND THOMAS & ORS.

63C -

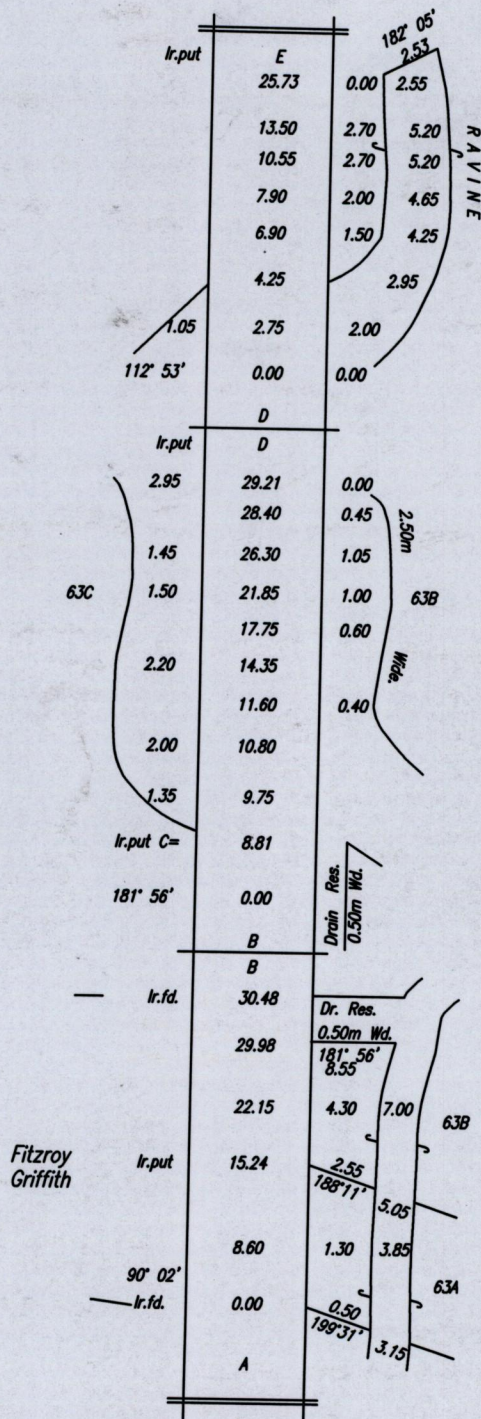
Vol. 4607 Fol. 77

JOHN DOUGLAS

63D -

CT. VOL. 5288 FOL. 313 YEARWOOD MOSES DOUGLAS

63E + 64 -



5 APR 2004  
Lands and  
Surveys  
Division

1328/42  
1195/5