

Process ID# 72924

R.P.O Vol. 442

Fol. 97

C.T. Vol. 576

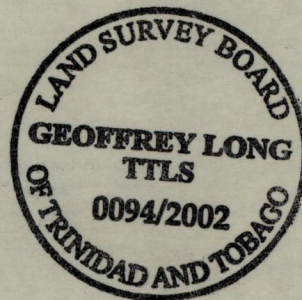
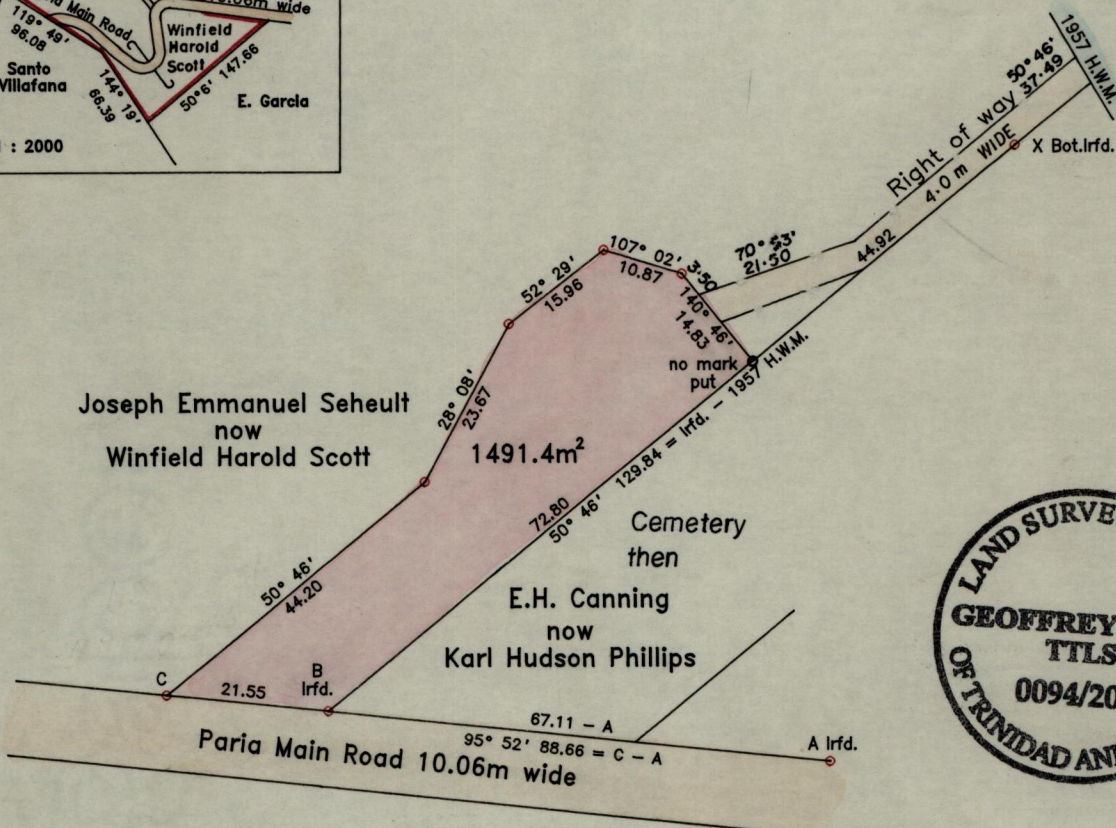
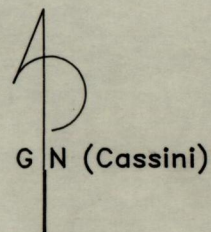
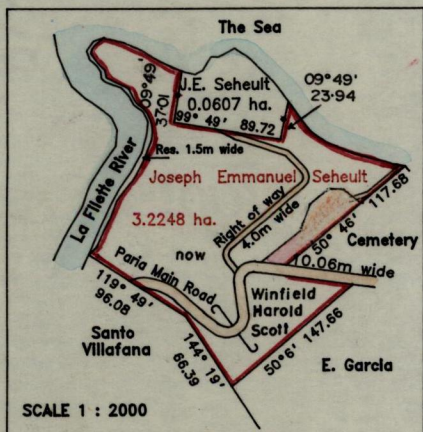
Fol. 85

Vol. 4726 fol. 543

Ward of Blanchisseuse

County of St. George

Cadastral Sheet 4B & 4E (B.3.P)
3/c 1/a



Approved: *[Signature]*
Director of Surveys 2003.4.29

Orig 944: 135
Ronald F. Dec. Harford

Ref. BK. 753 - J.E SEHEULT.

Ronald F. Dec. Harford

SCALE 1 : 1000
Distances are in METRES.

Note: ● Denotes Iron put unless otherwise stated.
Bearings are Cassini Grid based on solar observations.
To obtain compass bearings add 11 minutes.
B - X by computation.

PLAN of a parcel of land coloured pink in the Ward of Blanchisseuse.
Containing one thousand four hundred and ninety one point four square metres.
Surveyed by me, with due authority in January 2000.
In accordance with Reg. 25(1) of the Land Surveyors Regulations 1998,
I certify that this plan is correct.

Checked by *[Signature]* 29-4-03
Entered on *[Signature]*

Geoffrey Long
Trinidad and Tobago Land Surveyor 11th August 2001