

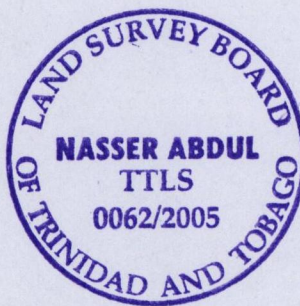
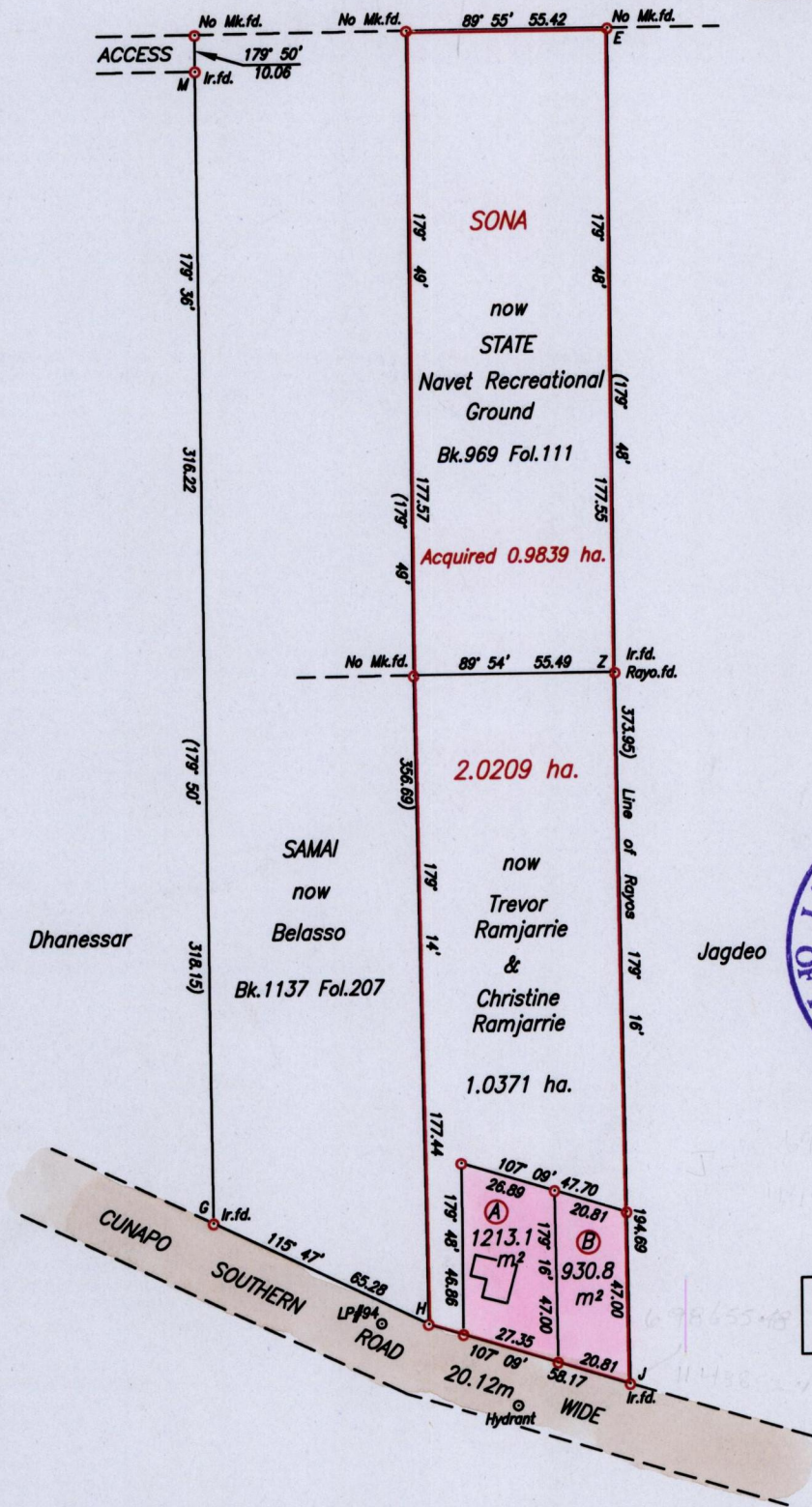
Process ID# 74301

R.P.O. Vol. 576 Fol. 381

VOL. 4727 Fol. 251

Cadastral Sheet E.21.F. 55B/1/b
Ward of Charuma
County of Nariva

Navet



- (A) 13,057 s.f.
- (B) 10,019 s.f.

Approved

Director of Surveys

2005.4.26

Vide Bk.1137 Fol.206

Station	Bearing	Distance	Station
J	259° 29'	31.50	Hydrant
J	284° 13'	70.75	LP#94

SCALE 1/2000

Distances are in metres

o Denotes Ir.put except otherwise stated
Bearings are Cassini Grid based on Solar Observations

PLAN of 2 Parcels of land coloured pink in the Ward of Charuma
Containing together two thousand one hundred and forty three point nine square metres
Surveyed by me with due authority in October 2004

In accordance with Regulation 25 (1) of the Land Surveyors' Regulations 1998,
I certify that this plan is correct.

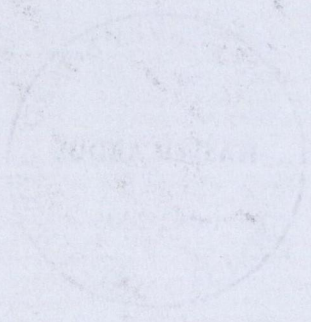
Checked by [Signature] 2005.4.25

Entered on CMIS 17.12.2013

[Signature]
19th March
Trinidad & Tobago Land Surveyor2005

A.

B. VOL. 4727 FOL. 261 TREVOR & CHRISTINE RAMIARRIE



1195/232