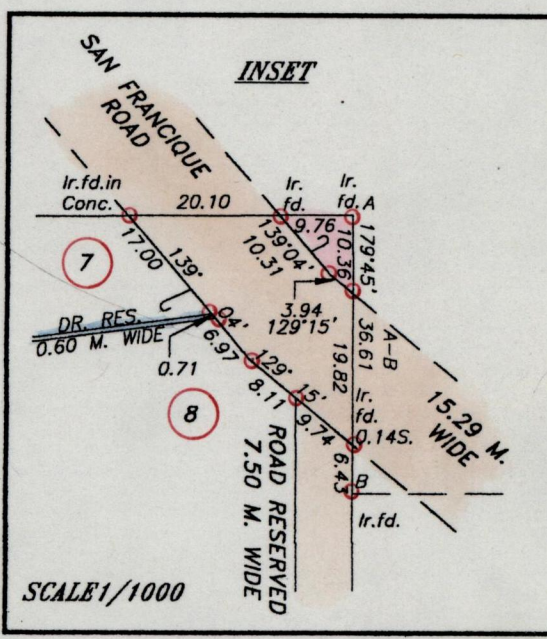
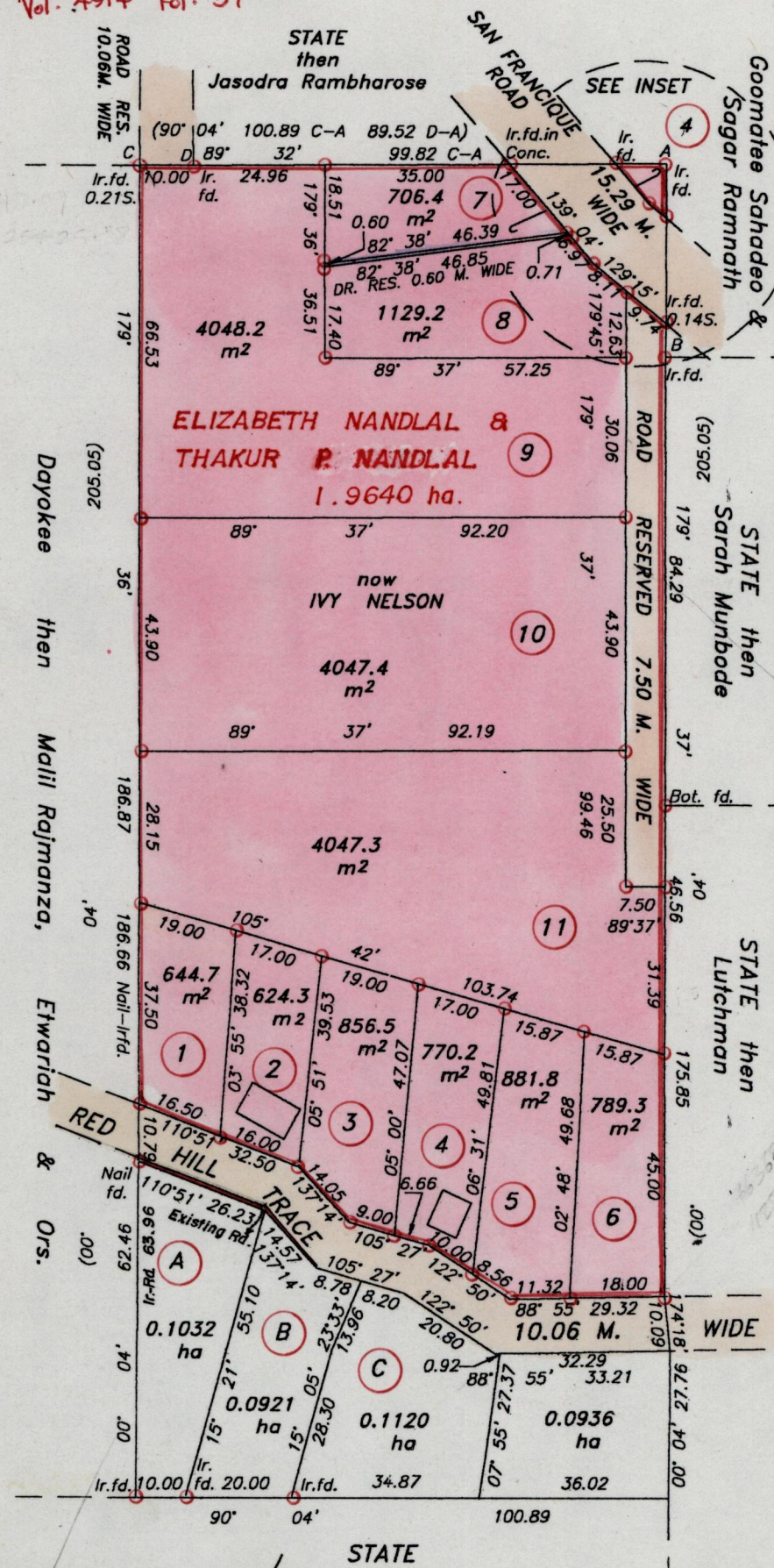


Process ~~20~~ 74517  
 R.P.O. Vol 186 Fol 77  
 C.T. Vol 3911 Fol 415  
 U.P.R.N. No. ....  
 Vol. 4914 Fol. 37

1328

218

Ward of Siparia  
 County of St. Patrick  
 Cadastral Sheet (G.12.G.)  
 63.F.  
 1/c



TRANSFERS

A 0.1032 ha. PATRICA BASDEO & RAMJIT BASDEO C.T. Vol 3798 Fol. 59	B 0.0921 ha. ELIZABETH NANDLAL & THAKUR NANDLAL C.T. Vol. 3798 Fol. 65	C 0.1120 ha. RAHIM DILLAH, HANIFF DILLAH & ORS. C.T. Vol. 3369 Fol. 467
--	---	--

Approved   
 Director of Surveys  
 2003.07.20

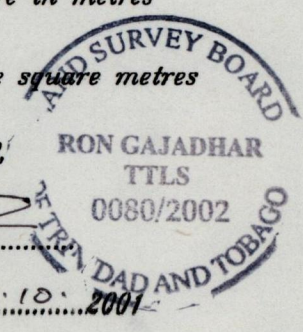
Bk. 1238 Fol. 166  
 SCALE 1/1250

○ Denotes Iron put except stated otherwise  
 Bearings are Grid Cassini based on Solar Observations  
 Plan of 11 Parcels of land coloured pink in the Ward of Siparia  
 Containing together eighteen thousand five hundred and forty five point three square metres  
 Surveyed by me with due authority, in September 2001  
 In accordance with Regulation 25 (1) of the Land Surveyors' Regulations 1998,  
 I certify that this plan is correct.

Distances are in metres

Checked by   
 Entered on

Trinidad & Tobago Land Surveyor..... 20.10.2001





Original Bk 12.38: 166

Lot. (1) Vol. 4914 fol. 43 LARRY BHAGWANDIN

---

Lot. (3) CT. VOL. 5330 FOL. 35

---

LIBRARY