

Process JP# 75260

R.P.O. Vol. 432 Fol. 57

C.T. Vol. 3278 Fol. 425

Vide Bk.1179 fol.33

Vide Bk.1249 Vol.2 fol.192

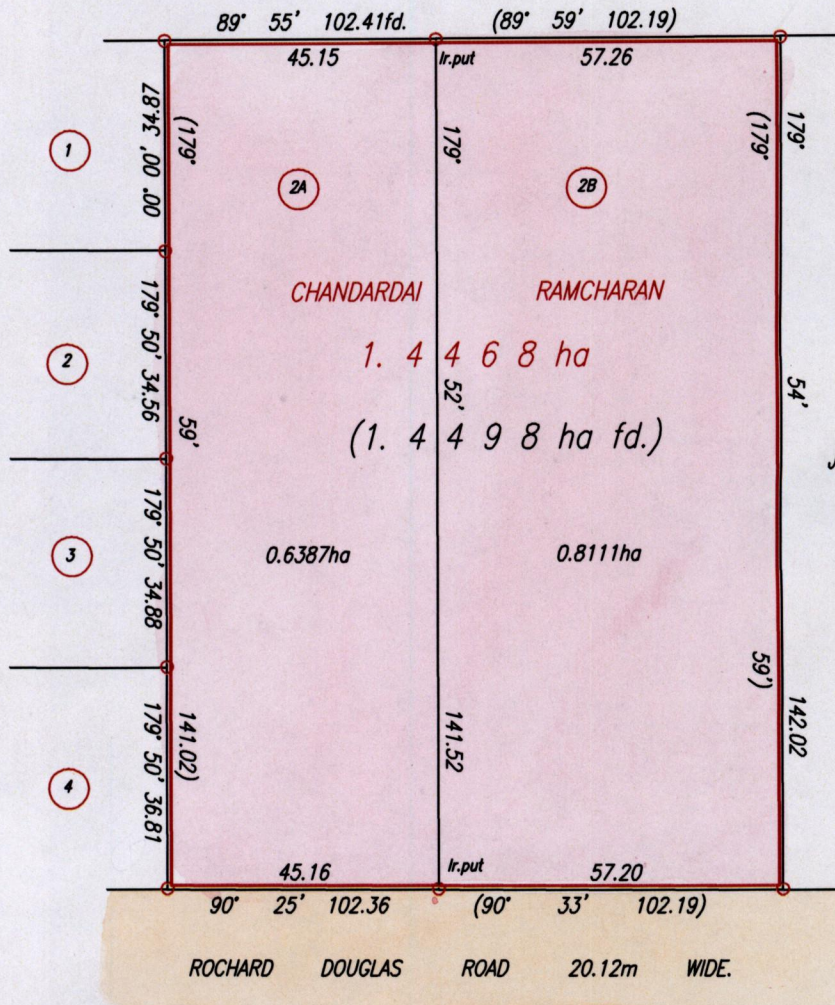
Cadastral Sheet G.14.C. 64D

Ward of Savana Grande.

County of Victoria

VOL. 4988 FOL. 463

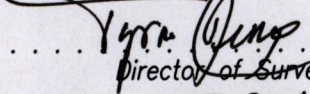
Jessie Simpson



Jankeenan

678 023.89
1126 569.73
x45 84.

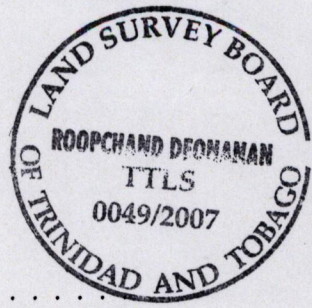
678 023.89
1126 569.73

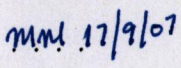
Approved  Director of Surveys

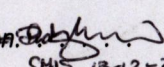
SCALE 1:1250

Distances are in metres

○ Denotes Iron found except otherwise stated
 Bearings are Cassini Grid based on Solar Observations
 PLAN of 2 Parcels of land coloured pink in the Ward of Savana Grande.
 Containing together one point four four nine eight hectares.
 Surveyed by me, with due authority, in July, 2007
 In accordance with Regulation 25 (1) of the Land Surveyors' Regulations 1998,
 I certify that this plan is correct.



Checked by  17/9/07

Entered on  Trinidad & Tobago Land Surveyor. 23rd July 2007.

CHS 13-12-2007 PATH = EV700 D:\Drawings07\CRamcharan.dwg.

2A. VOL. 4988 FOL. 469 ANITA RAMROOP

2B. VOL. 4988 FOL. 421 IANANAN RAMCHARAN.

