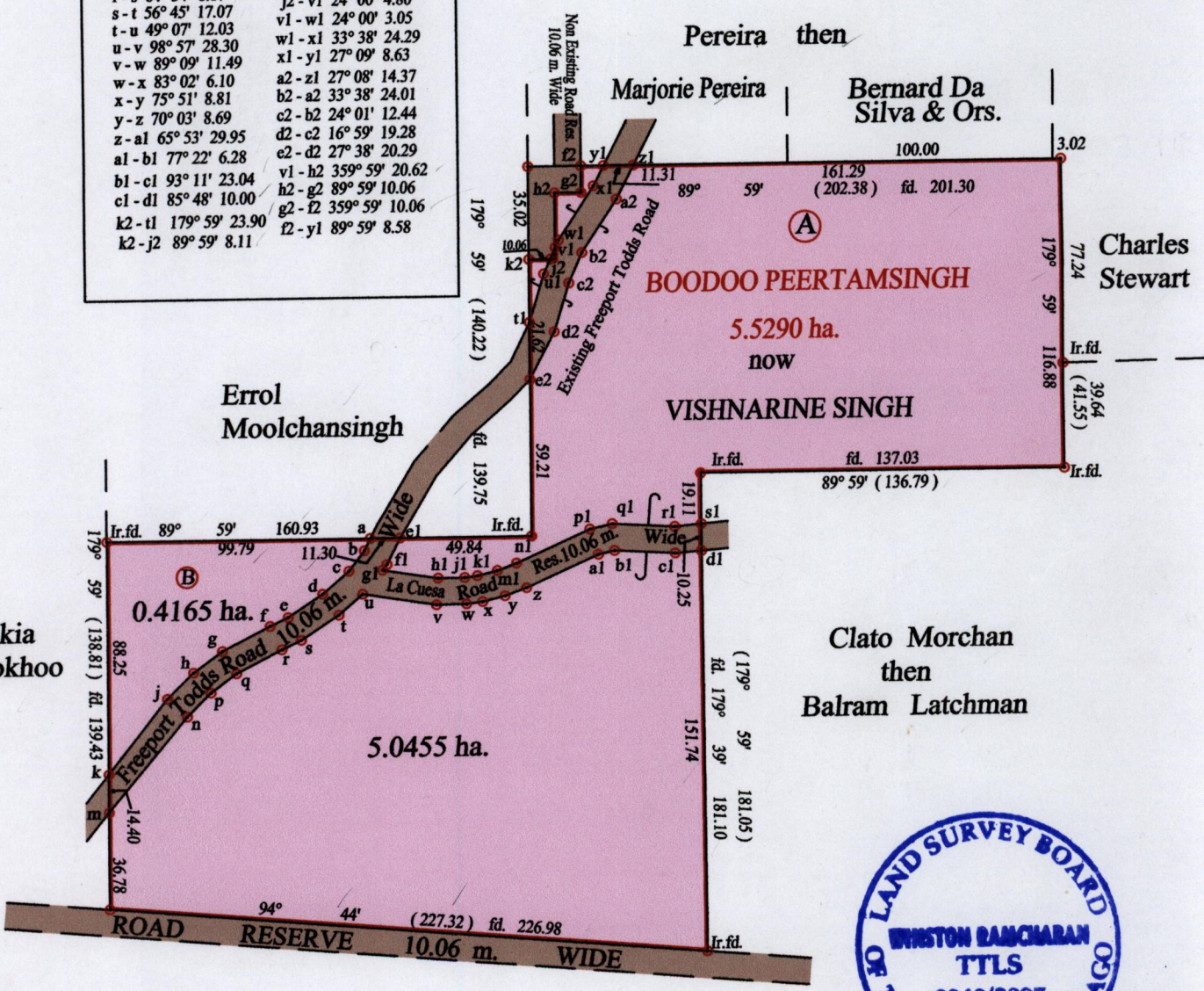


G N  
CASSINI

a-b 207° 02' 5.16	fl-el 27° 04' 11.24
b-c 217° 41' 9.77	gl-fl 37° 41' 2.71
c-d 229° 07' 13.19	gl-hl 98° 57' 21.28
d-e 236° 45' 15.71	hl-jl 89° 09' 10.09
e-f 244° 35' 7.65	jl-kl 83° 02' 4.93
f-g 242° 43' 20.41	kl-ml 75° 51' 7.71
g-h 233° 48' 13.56	ml-nl 70° 02' 7.81
h-j 225° 26' 13.97	nl-pl 65° 53' 30.59
j-k 218° 24' 36.05	pl-ql 77° 21' 8.69
m-n 39° 46' 46.66	ql-rl 93° 12' 23.78
n-p 45° 27' 12.68	rl-sl 84° 58' 10.07
p-q 53° 47' 12.04	tl-ul 17° 02' 19.16
q-r 62° 43' 19.46	ul-j2 24° 00' 6.11
r-s 64° 34' 8.17	j2-v1 24° 00' 4.80
s-t 56° 45' 17.07	v1-w1 24° 00' 3.05
t-u 49° 07' 12.03	w1-x1 33° 38' 24.29
u-v 98° 57' 28.30	x1-y1 27° 09' 8.63
v-w 89° 09' 11.49	a2-z1 27° 08' 14.37
w-x 83° 02' 6.10	b2-a2 33° 38' 24.01
x-y 75° 51' 8.81	c2-b2 24° 01' 12.44
y-z 70° 03' 8.69	d2-c2 16° 59' 19.28
z-a1 65° 53' 29.95	e2-d2 27° 38' 20.29
a1-b1 77° 22' 6.28	v1-h2 359° 59' 20.62
b1-c1 93° 11' 23.04	h2-g2 89° 59' 10.06
c1-d1 85° 48' 10.00	g2-f2 359° 59' 10.06
k2-tl 179° 59' 23.90	f2-y1 89° 59' 8.58
k2-j2 89° 59' 8.11	



SEE S.A. 125.

Vide Bk. 254 fol. 102  
 Vide Bk. 1179 fol. 201  
 Vide Bk. 1123 fol. 92, 93 & 220

Approved *[Signature]*  
 Director of Surveys  
 2008.1.9

• Denotes Iron put except stated otherwise.

SCALE : 1:2500

Note: Bearings are cassini grid based on solar observations Distances are in metres  
 PLAN of 2 Parcels of land coloured pink in the Ward of Montserrat  
 Containing together five point four six two zero hectares  
 Surveyed by me, with due authority, in March 2006  
 In accordance with Regulation 25 (1) of the Land Surveyors' Regulations 1998,  
 I certify that this plan is correct.

Checked by *[Signature]* 19.12.07

Entered on *[Signature]* 13.12.07 Trinidad & Tobago Land Surveyor 12<sup>th</sup> December 2007



A.

B. VOL. 4986 FOL. 167 ROGER MAHARAI

