

1328

201

Process ID# 75800

Cadastral Sheet G.13.K. 63F  
3/b

R.P.O. Vol. 144 Fol. 471

Ward of Siparia

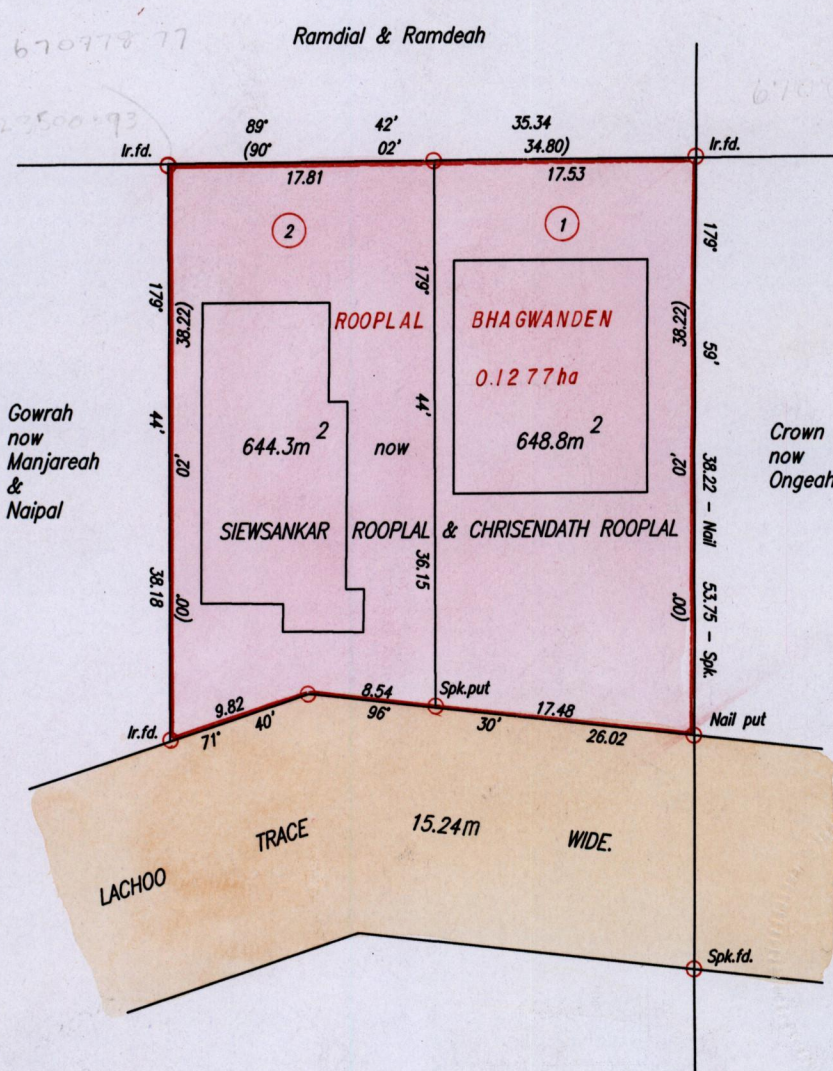
C.T. Vol. 883 Fol. 19

County of St.Patrick.

Vide Bk. 763 fol. 213

" " 1197 " 101

Vol 4932 Fol 451



Approved

*[Signature]*  
 Director of Surveys  
 2005.1.24

SCALE 1:500

Distances are in Metres



○ Denotes Iron put except otherwise stated.

Bearings are Cassini Grid based on Solar Observations.

PLAN of 2 Parcels of land coloured pink in the Ward of Siparia  
Containing together one thousand, two hundred and ninety three point one square metres.

Surveyed by me, with due authority, in October, 2004

In accordance with Regulation 25(1) of the Land Surveyors' Regulations 1998,  
I certify that this plan is correct.

Checked by

*[Signature]* *[Signature]*

Entered

Trinidad & Tobago Land Surveyor 22<sup>nd</sup> October 2004  
 PATH = EV700 C:\Drawings04\Rooplal.dwg.

1.

2. Vol. 4732 Fol. 463 Raymond Rooplal b. Reynold Rooplal.



1195/149