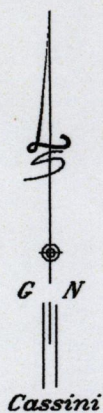
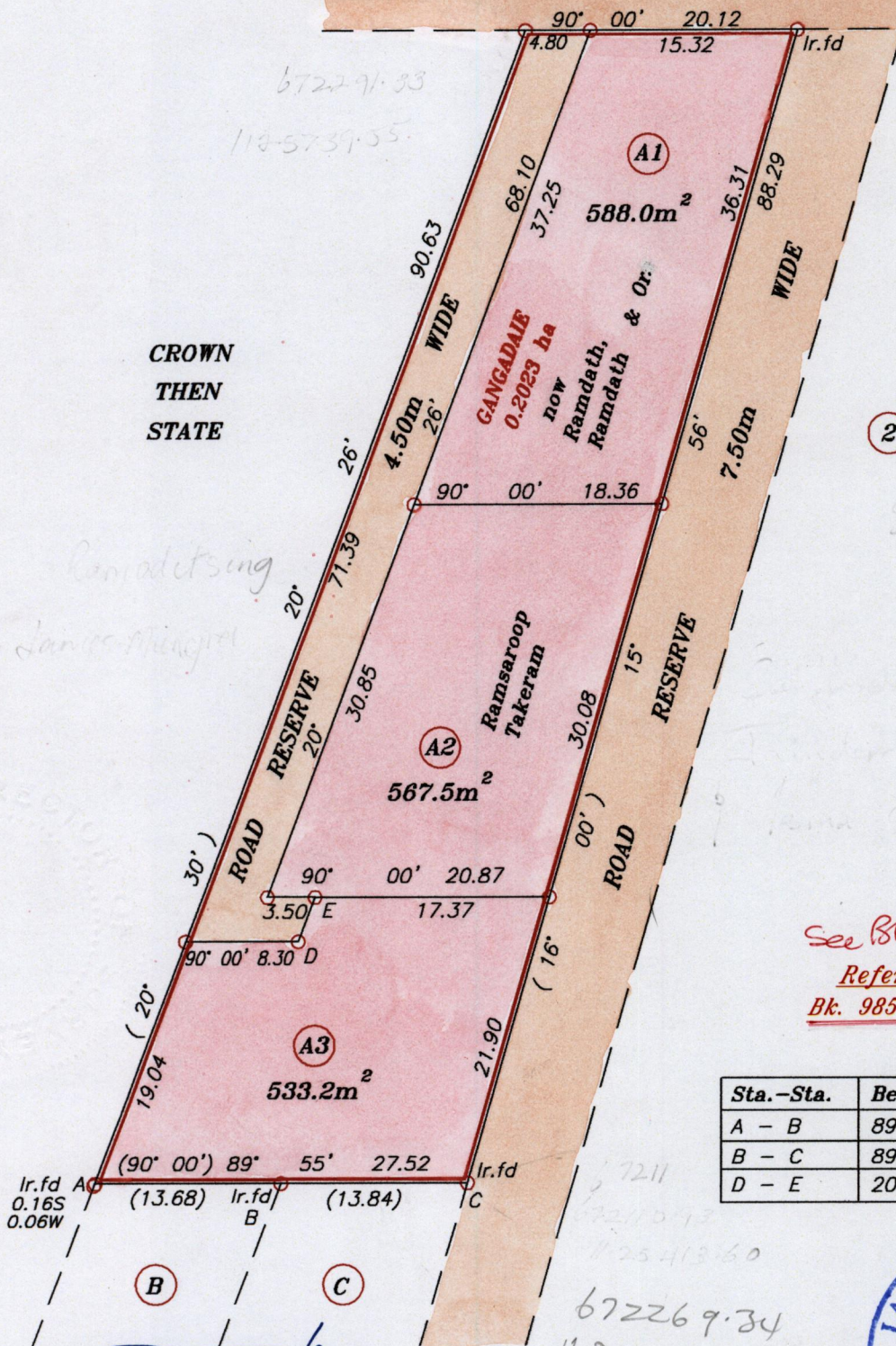
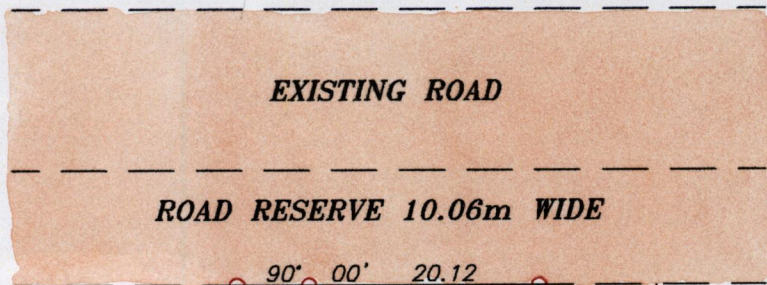


Vol 4720 Fol 383

Process Jdt 75302



See Bk 915: 80
 Reference:
 Bk. 985 Fol. 212

Sta.-Sta.	Bearing	Distance
A - B	89° 55'	13.73
B - C	89° 55'	13.79
D - E	20° 26'	3.50



Approved *[Signature]*
 Director of Surveys
 2005.8.24

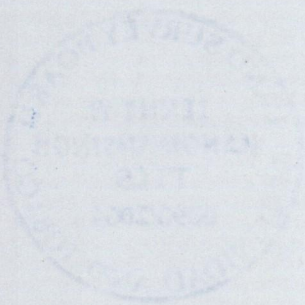
○ Denotes Iron put except stated otherwise.
 Bearings are Cassini Grid based on Solar Observations.
 Note : To obtain compass bearing add/subtract 0 minutes. Distances are in metres
 Plan of 3 Parcels of land coloured pink in the Ward of Naparima
 Containing together one thousand six hundred and eighty eight point seven square meters
 Surveyed by me with due authority, in April, 2001
 In accordance with Regulation 25 (1) of the Land Surveyors' Regulations 1998,
 I certify that this plan is correct.

Checked by *[Signature]* 11/8/05
 Entered on
[Signature]
 Trinidad & Tobago Land Surveyor..... 6/12/.....2004

A₁

A₂ Vol 4720 Fol 389 Saiffudin Mohammed, Jainden Mohamimed
Taleel & Isma Taleel

A₃ Vol 4763 Fol 203 Mewlyn Zama and Zainood Zama



1358/17