

1328

1337

Process ID 74289

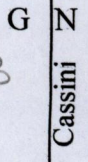
R.P.O Vol. Fol

C.T Vol. 4381 Fol. 243

Ward of Savana Grande

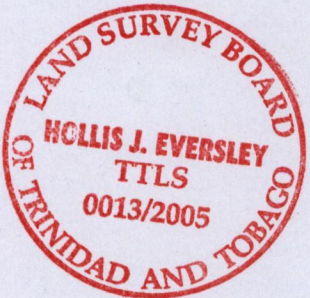
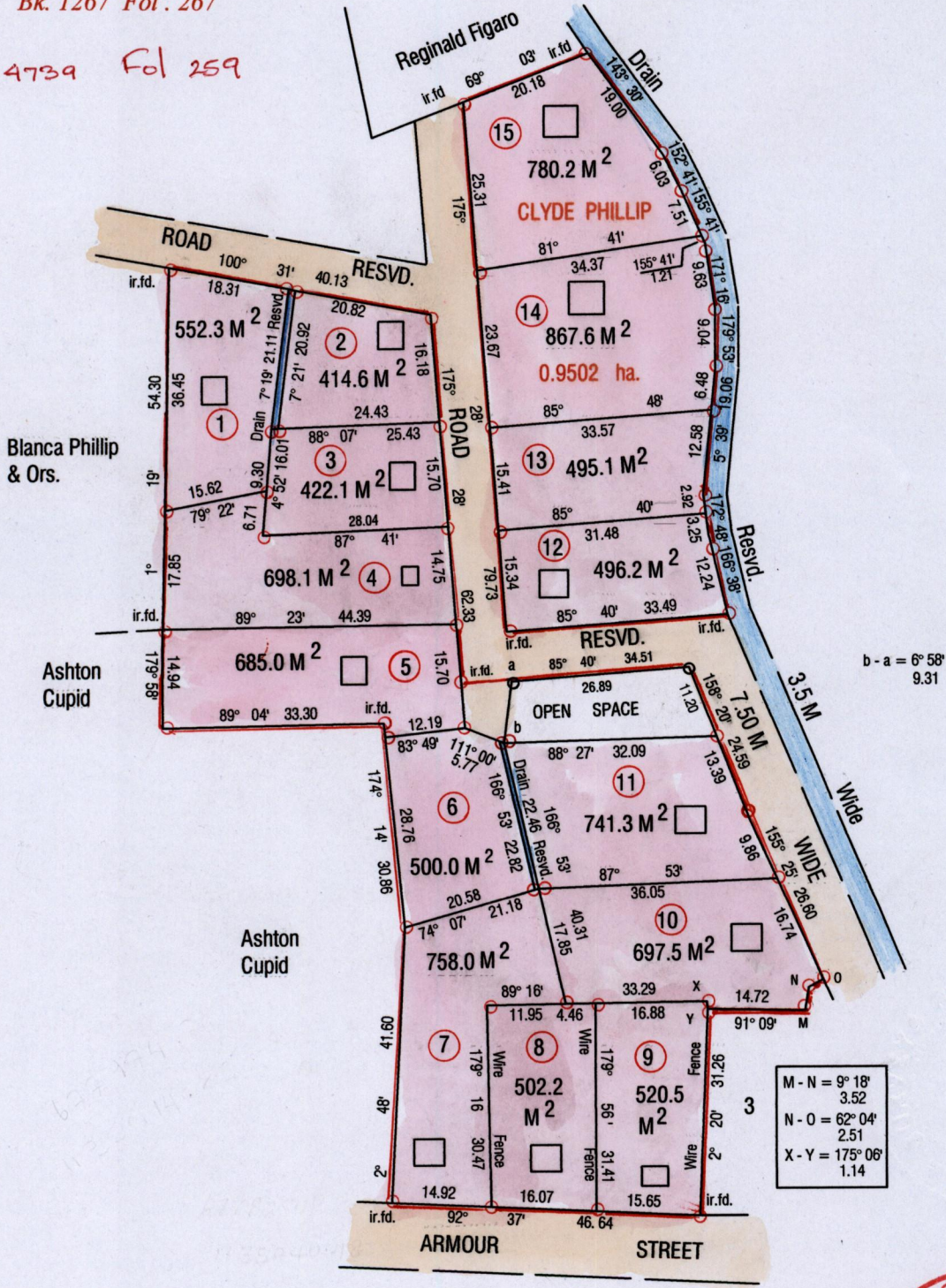
County of Victoria

Cadastral Sheet G 4 K 54 D 4/a



Bk. 1267 Fol. 267

Vol 4739 Fol 259



SEE 1282 : 44

Bearings are Cassini Grid based on Solar obs.

○ Denotes iron put except otherwise stated

Approved

[Signature]
Director of Surveys 2005-10-15

Note: To obtain compass bearings add/subtract minutes

Scale 1: 1000
Distances are in metres

PLAN of 15 Parcels of land coloured pink in the Ward of Savana Grande Containing together nine thousand one hundred and thirty point seven square metres Surveyed by me, with due authority, I n August 2003

In accordance with Regulation 25 (1) of the Land Surveyors' Regulations 1998, I certify that this plan is correct.

Checked by *[Signature]* 2005-10-7

Entered CMIS 11.11.2013. Trinidad and Tobago Land Surveyor *[Signature]* 2005

- 1.
- 2.
- 3.
- 4.
- 5.
- 6.
- 7.
- 8.
- 9.
- 10.
- 11.
- 12.
- 13.
- 14.
- 15.

CLYDE PHILLIP

Vol. 4739 Fol 205 Clayton Phillip

at 5000 0

Vol. 4768 Fol. 503 Beryl Leben.

Vol 4968 Fol 53 Gerard Walker.

Vol 5421 Fol. 7 Dindial & Susan Bridglal.

~~Vol. 4882 Fol. 465 AYONB ALI & GISELLE ALLISHA LALL~~

~~Vol. 4832 Fol. 467 AYONB AROON ALI & GISELLE ALLISHA LALL.~~



1328/187.
1358/52