

1328

135

Process Is#74426

R.P.O. Vol. 28
C.T. Vol. 3452

Fol. 555
Fol. 175

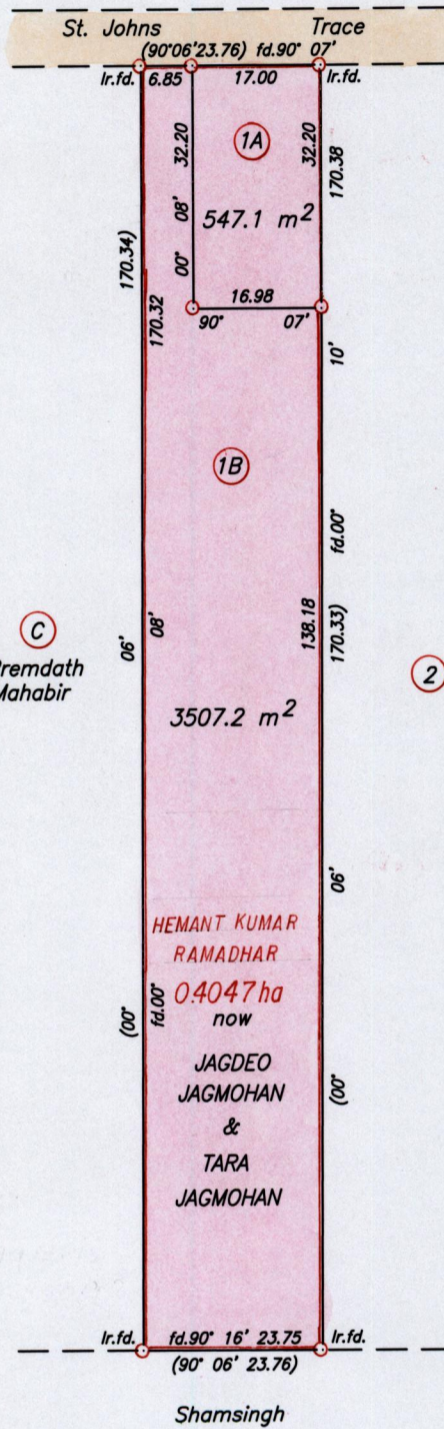
Cadastral Sheet G.12.B. ^{63D} 2/b

Ward of Siparia
County of St. Patrick

Parcel 1

Vide : Bk. 1197 Fol. 86

Vol. 4736 Fol. 519

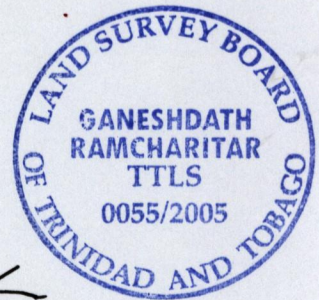


Approved *[Signature]*
Director of Surveys
2005-8-24

Chitradewa Jagmohan

SCALE 1/1000
Distances are in metres

○ Denotes Iron put except otherwise stated
Bearings are Cassini Grid based on Solar Observations
Plan of 2 Parcels of land coloured pink in the Ward of Siparia
Containing together four thousand and fifty four point three square metres
Surveyed by me, with due authority, on September 1st. 2004
In accordance with Regulation 25 (1) of the Land Surveyors' Regulations 1998,
I certify that this plan is correct.



Entered on *[Signature]*

Checked by *[Signature]* 22/08/05 Trinidad & Tobago Land Surveyor 2005

Original Bk 1196:86

see Bk 1163:180

1A. Vd. 4736 Fol 523 CHITRADEVA JAGMOHAN

1B.



1358/24