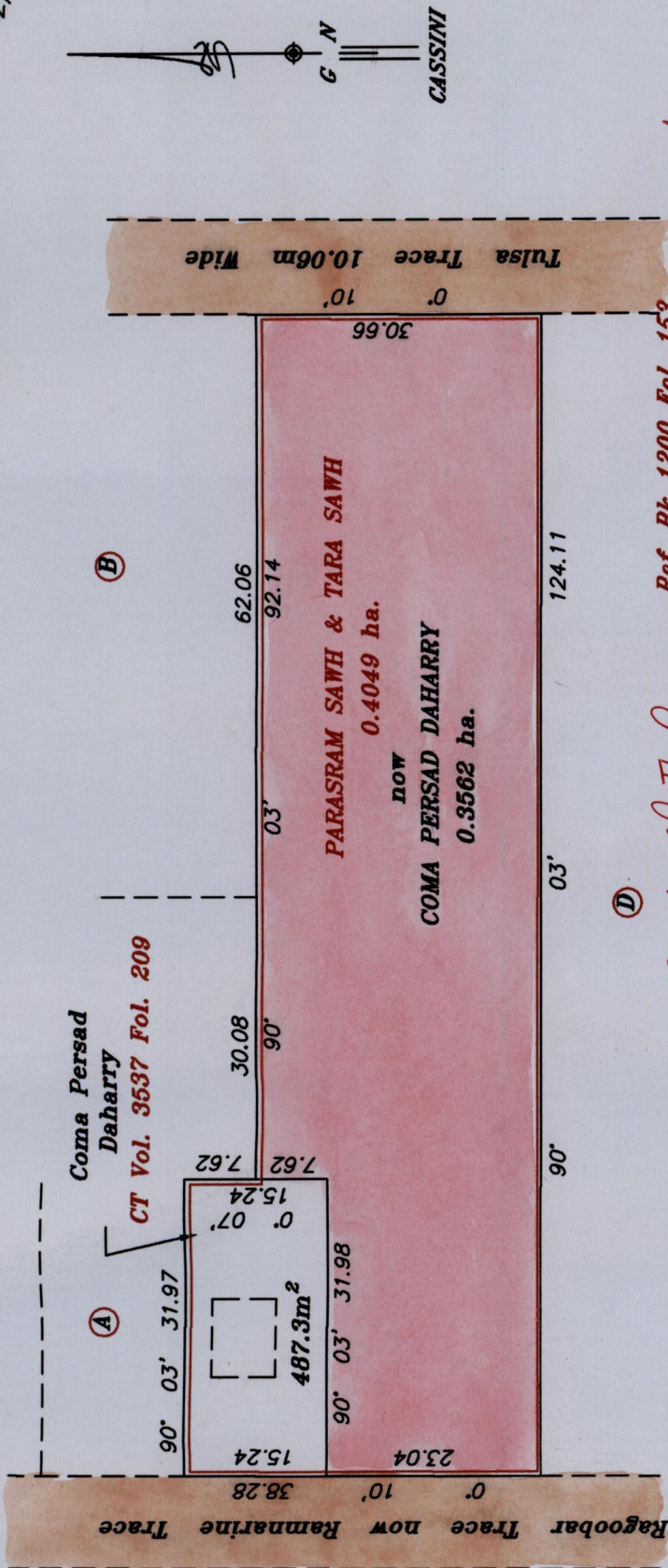


REMAINING PORTION

RPO Vol. 115 Fol. 459
CT. Vol. 3169 Fol. 21
Vol. 4689 Fol. 439

Ward of Siparia
County of St. Patrick
Cadastral Sheet (G.13.E), 63E
2/c

Process 74436



Charles & Ruth Ramesar Ref. Bk 1200 Fol. 153
Bk. 1175 Fol. 135 Original

Approved
Director of Surveys

SCALE 1 : 750

Distances are in metres

Note : To obtain compass bearing subtract 3 minutes.
This is a true copy of a diagram of zero point four zero four nine hectare originally transferred to Parasram Sawh & Tara Sawh showing a portion coloured pink and containing zero point three five six two hectare being the remainder after one (1) previous transfer of a portion of the land.
In accordance with Regulation 25 (1) of the Land Surveyors' Regulations 1998, I certify that this plan is correct.

Checked by
Entered on
Tobago Land Surveyor 2/12/2002

