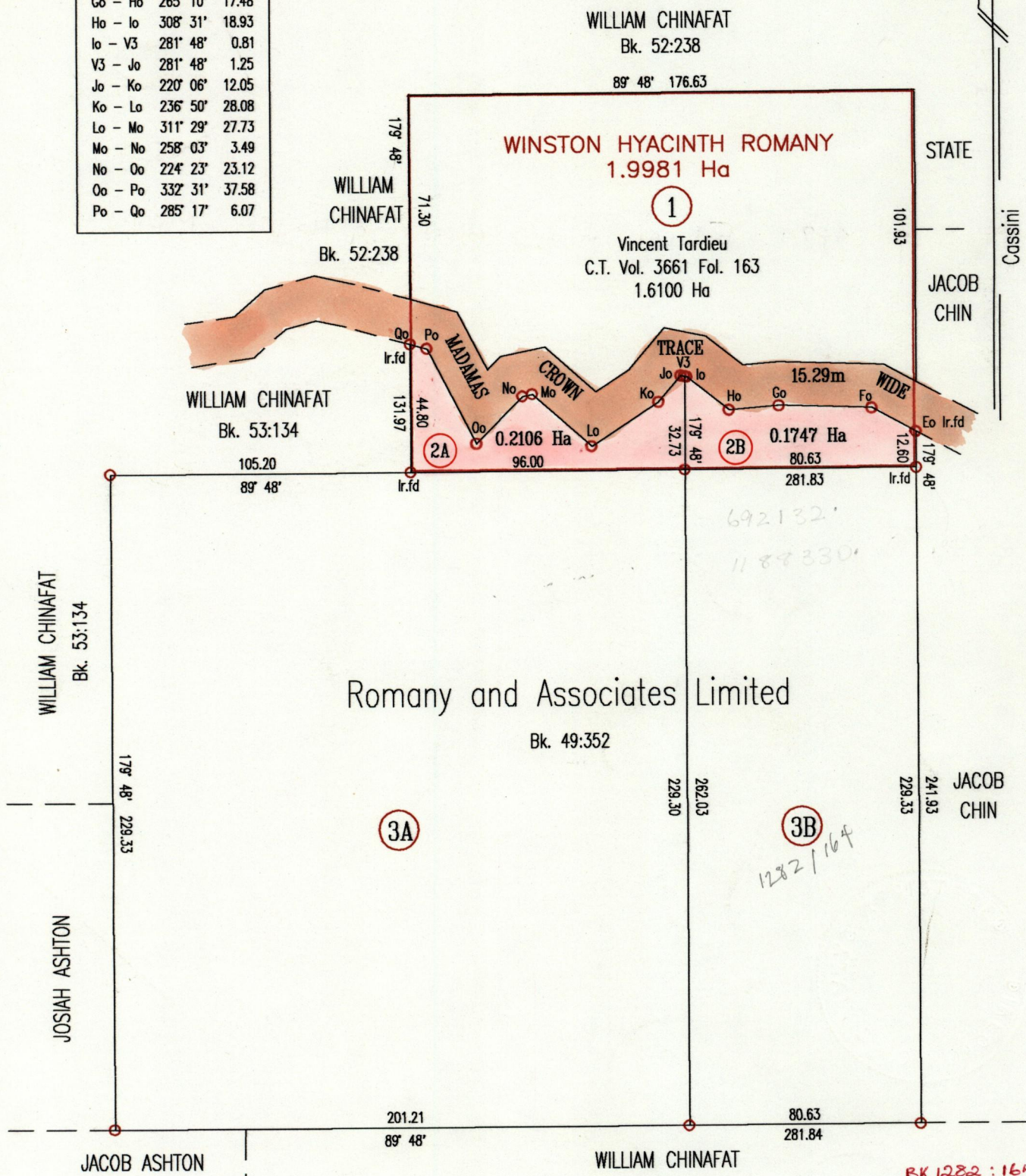




LINE	BEARING	DIST.
Eo - Fo	298° 33'	17.47
Fo - Go	271° 48'	32.34
Go - Ho	265° 10'	17.48
Ho - Io	308° 31'	18.93
Io - V3	281° 48'	0.81
V3 - Jo	281° 48'	1.25
Jo - Ko	220° 06'	12.05
Ko - Lo	236° 50'	28.08
Lo - Mo	311° 29'	27.73
Mo - No	258° 03'	3.49
No - Oo	224° 23'	23.12
Oo - Po	332° 31'	37.58
Po - Qo	285° 17'	6.07



Approved *[Signature]*
 Director of Surveys
 2072/12/02

Bearings are Cassini Grid based on Solar Obs.

○ Denotes Iron Put unless otherwise stated
 Plan of 2 Parcels of land coloured pink in the Ward of Blanchisseuse
 Containing together zero point three eight five three hectare
 Surveyed by me, with due authority, in December 2001

In accordance with Regulation 25(1) of the Land Surveyors' Regulations 1998, I certify that this plan is correct.

Checked by *M.M. 09/12/02*

Hakib Nandalal

Entered on *[Signature]*

Trinidad & Tobago Land Surveyor 05/12/2002

Note : Lots 2A & 3A to be Amalgamated
 Lots 2B & 3B to be Amalgamated

Vide
 Bk 1219:94
 Bk 49:352

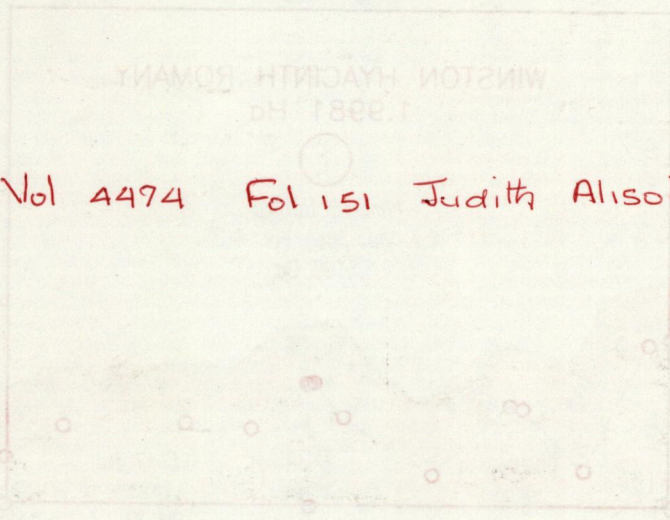
SCALE 1:2000
 Distances are in Metres



18	888
22	3881
	7574

1.

2A.



2B. Vol 4474 Fol 151 Judith Alison & Hayden S. Morris

9 DEC 2002
Lands and
Surveys
Division