

Process SD# 75519

1328

167

R.P.O Vol 251 Fol 561

C.T. Vol 1760 Fol 383

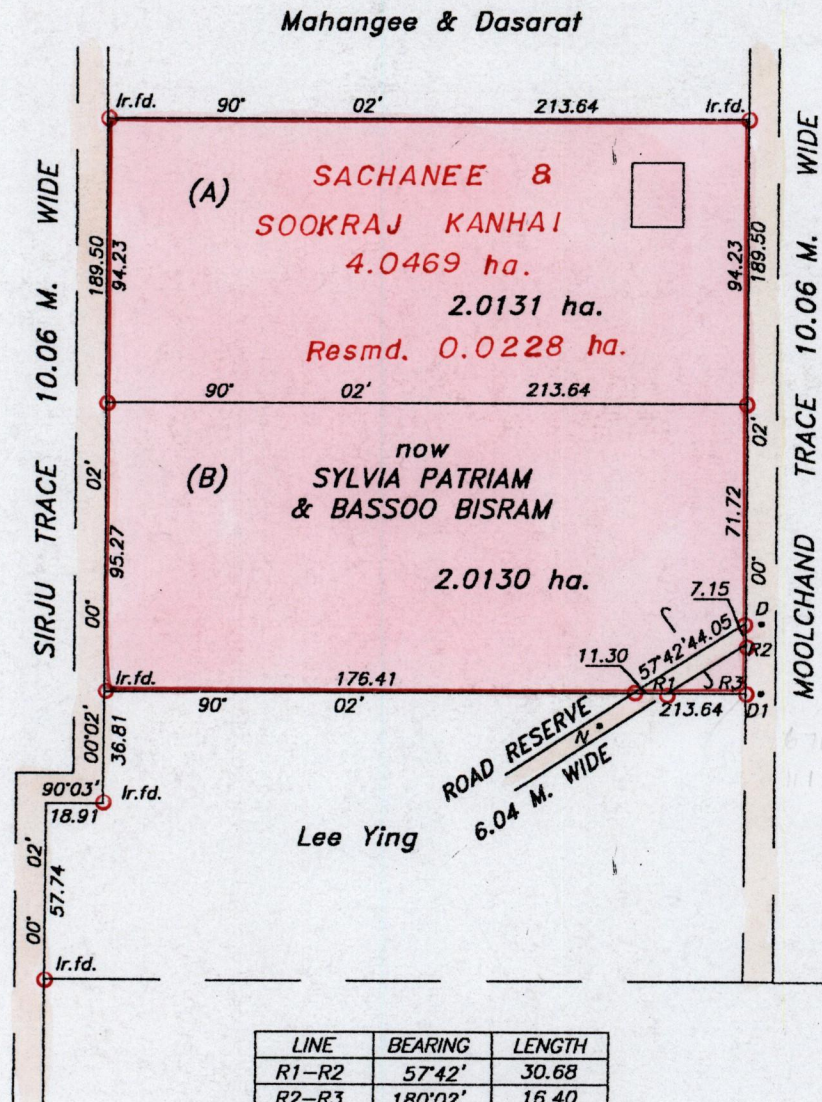
U.P.R.N. No.

Ward of Siparia

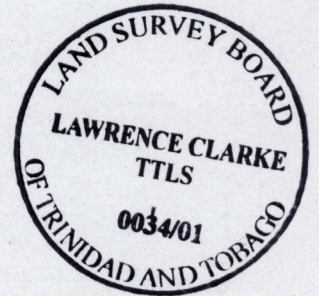
County of St Patrick

Cadastral Sheet G. 18. K. 73.C. 4/a&c

Vol. 4981 fol. 41



LINE	BEARING	LENGTH
R1-R2	57°42'	30.68
R2-R3	180°02'	16.40
R1-R3	90°02'	25.93



Approved *[Signature]*
Director of Surveys
2002.02.18

Bk. 423 Fol. 209
S.O. 835 / 09

SCALE 1/2500

○ Denotes Iron put except stated otherwise.

Note : To obtain compass bearing subtract 2 minutes.

Distances are in metres

Plan of 2 Parcels of land coloured pink in the Ward of Siparia

Containing together four point zero two six one hectares

Surveyed by me with due authority, in October 1999

In accordance with Rule 25 (1) of the Land Surveyors Regulations 1998,

I certify that this plan is correct.

Checked by *[Signature]*

[Signature]

Entered *[Signature]*

Trinidad & Tobago, Land Surveyor. 29. March. 2002

A Vol. fol.

B. Vol. 4981 50/47 BALDATH PATIRAM.

30 NOV 2001
Lands and
Surveys
Division