

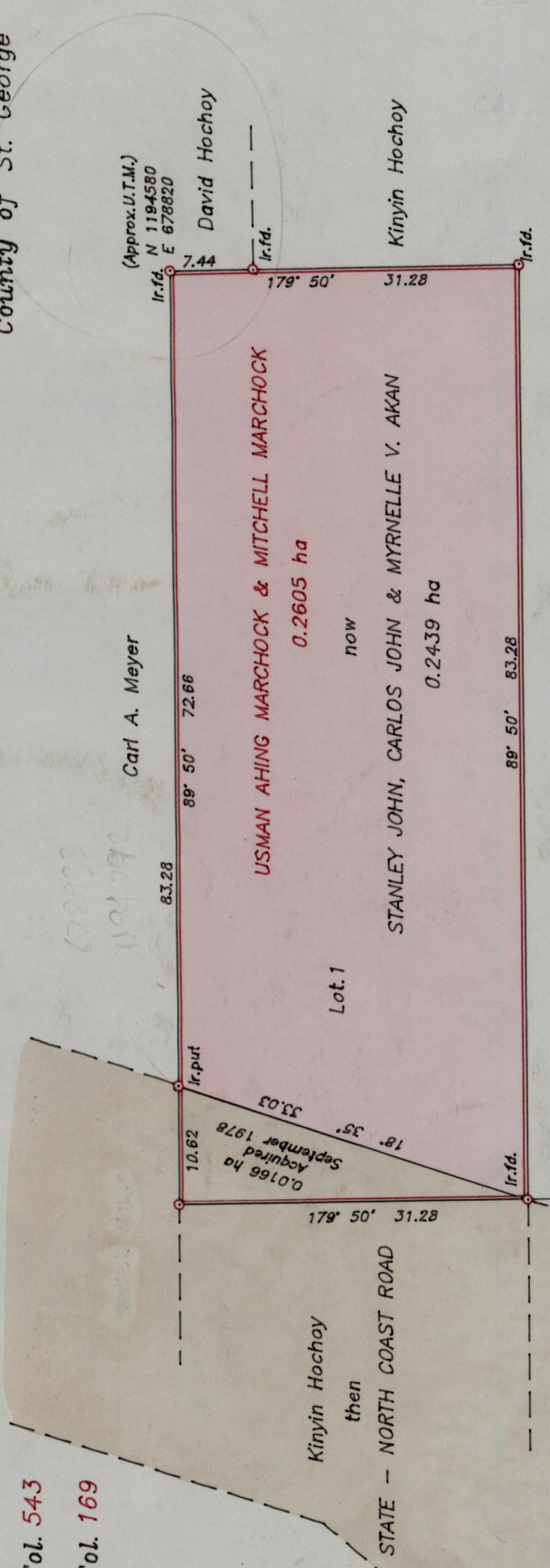
Ward of Blanchisseuse
County of St. George

"FILLETTE VILLAGE"

R.P.O. Vol. 357 Fol. 543
C.T. Vol. 1872 Fol. 169

Vol. 4994 fol. 461

Process SAH 72927



Approved
[Signature]
Director of Surveys
2004.8.20

o Denotes Boundary corners
Co-ordinates scaled from 1/10,000 ward sheet
Bearings are Cassini grid based on Magnetic Needle
Note: To obtain compass bearings subtract add 7 minutes.

SCALE 1/2000

Distances are in metres

PLAN of a Parcel of land coloured pink in the Ward of Blanchisseuse

Containing zero point two four three nine hectares

Surveyed by me with due authority in October 2003

In accordance with Regulation 25 (1) of the Land Surveyors' Regulations 1998,

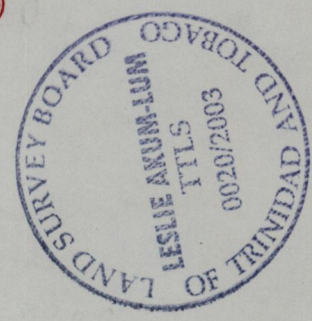
I certify that this plan is correct.

Checked by *[Signature]* 10/11/03

Entered *[Signature]*

Trinidad & Tobago Land Surveyor *[Signature]* 2003

Volume 4994 Lot 1 Marchock Fillette



1328

161

G N
Cassini

See: Bk. 1010/25,
Plan P.A.121 for acquisition
R.P.O. Vol.1872 Fol.165

Stanley, Carlos John & Myrnelle V. Akan