

Process ~~JD~~# 72951
R.P.O. Vol. 633' Fol. 119
Vol. 4639 fol. 449

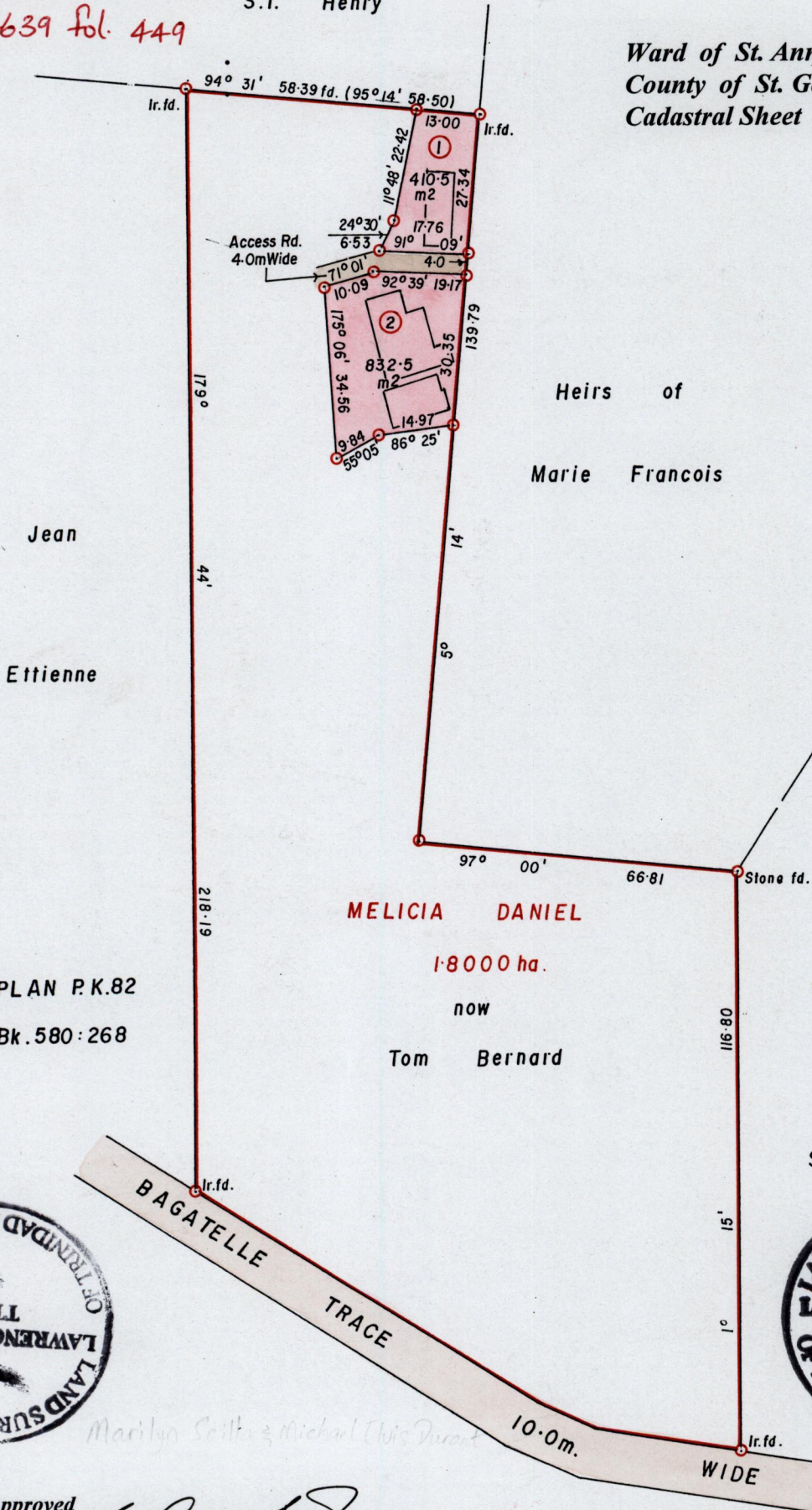
1320

1336

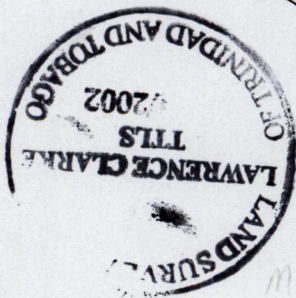
153

S.T. Henry

Ward of St. Anns
County of St. George
Cadastral Sheet B.17.F. 13F
4/d



See PLAN P.K.82
See Bk. 580:268



Approved *[Signature]*

Director of Surveys 2003-25 Bearings are Cassini Grid based on Solar Obs.
SCALE 1/1250

Note: To Obtain compass bearings add/subtract minutes Distances are in metres

PLAN of 2 Parcels of land coloured pink in the Ward of St. Anns
Containing together one thousand two hundred and forty-three square metres
Surveyed by me, with due authority, in June 2001.
In accordance with Regulation 25 (1), of the Land Surveyors Regulations 1998,
I certify that this plan is correct.

Checked by *[Signature]* *[Signature]*

Entered Trinidad and Tobago Land Surveyor *[Signature]* 2nd March 2002

○ Denotes Iron put unless otherwise stated

1 - Vol. 4501 fol. 409
Tom Bernard

2 - Vol. 4510 fol. 409
Tom Bernard

9 DEC 2002
Lands and
Surveys
Division

1279/21