

Process ID# 75347

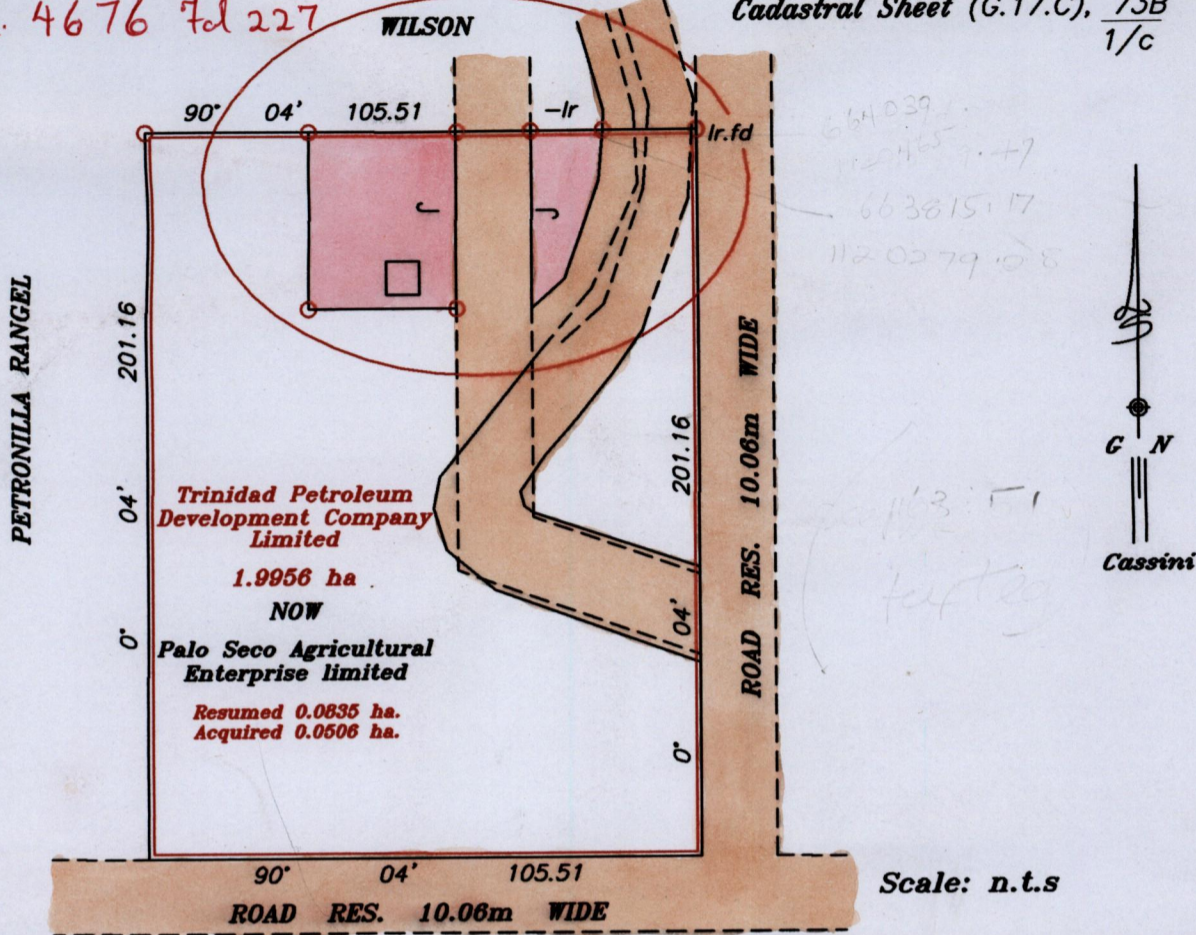
1328

143

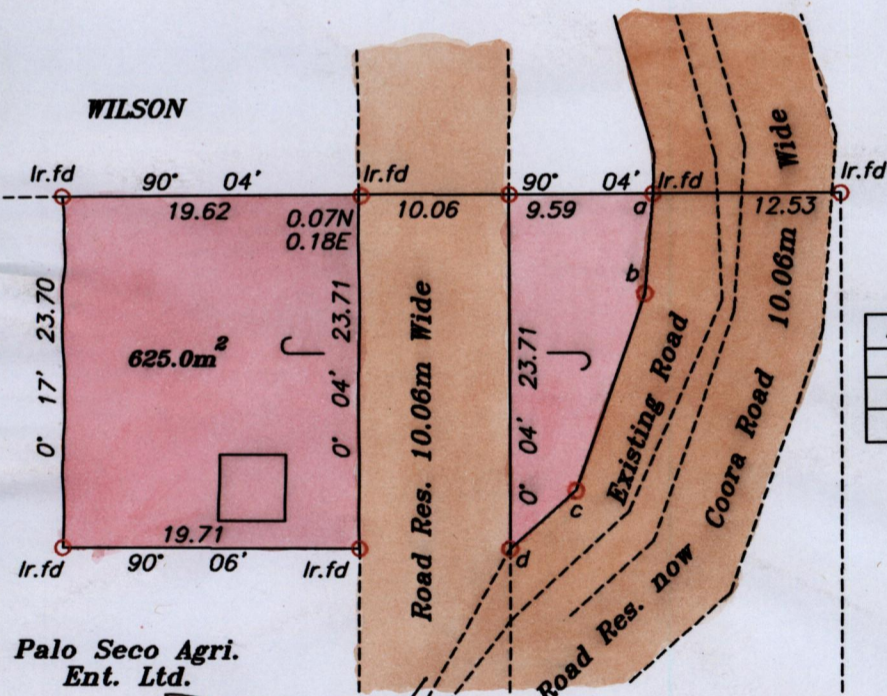
RPO Vol. 115 Fol. 105
CT. Vol. 678 Fol. 51

Vol. 4676 Fol. 227

Ward of Siparia
County of St. Patrick
Cadastral Sheet (G.17.C), $\frac{73B}{1/c}$



Scale: n.t.s



Sta.	bearing	distance
a-b	184° 40'	6.65
b-c	199° 32'	13.94
c-d	228° 18'	5.91



Cyril Parris
Ref: BK 468/255
Plan MB43
S/O 520/1910
S/O 839/1903

SCALE: 1/500

Distances are in metres

○ Denotes Iron put except stated otherwise.
Bearings are Cassini Grid based on Solar Observations.

Note: To obtain compass bearing subtract 4 minutes

Plan of a Parcel of land coloured pink in the Ward of Siparia
Containing six hundred and twenty five point zero square metres
Surveyed by me with due authority, in March 2003

In accordance with Regulation 25 (1) of the Land Surveyors' Regulations 1998,
I certify that this plan is correct.

Checked by M.M. 1/04/04

S Addo

Entered on

Trinidad & Tobago Land Surveyor 15th March 2004