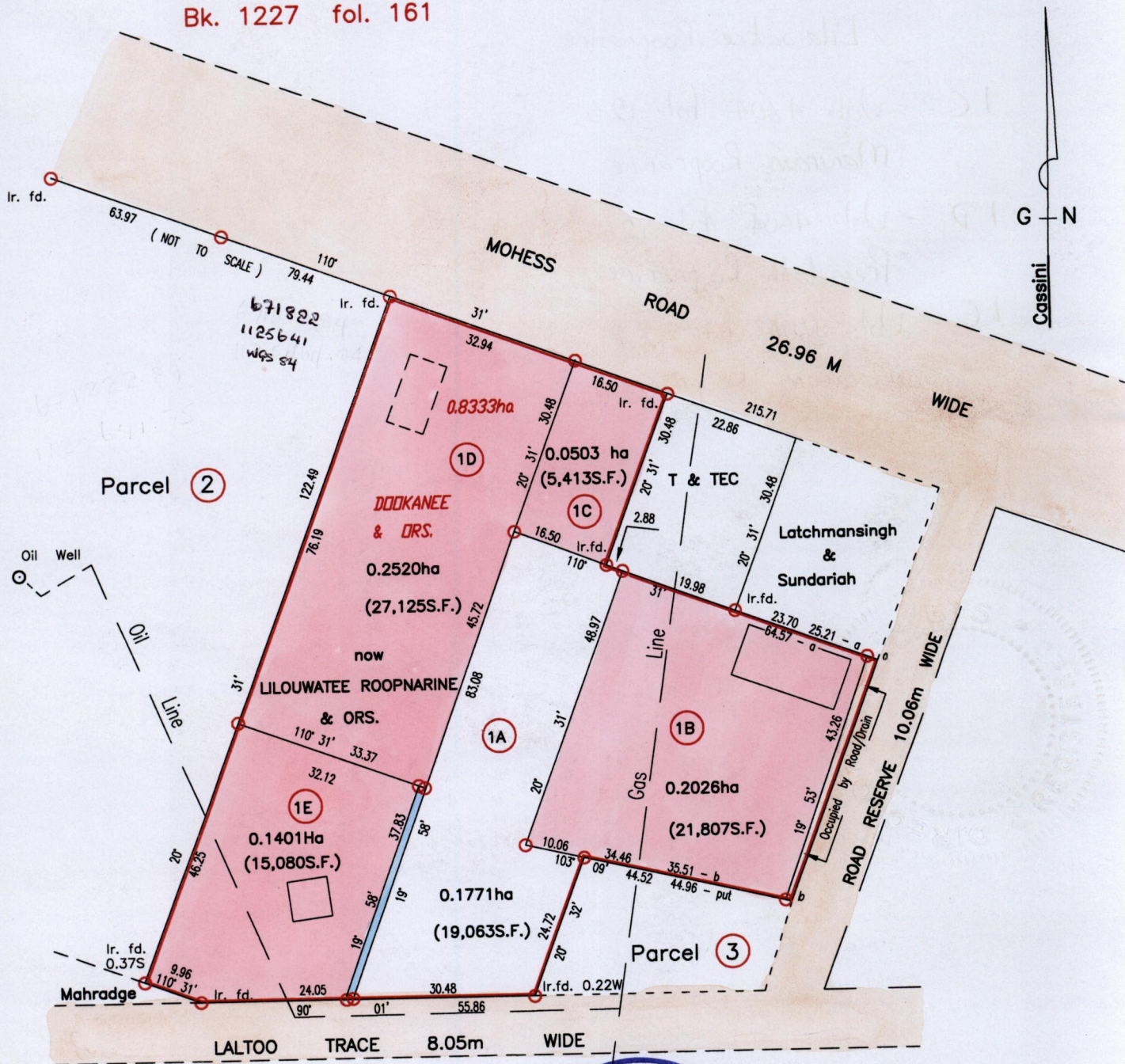


Process SA 74633

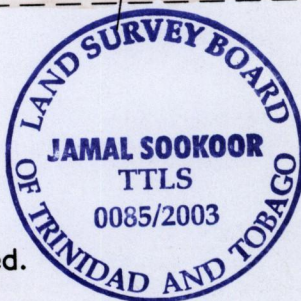
R.P.O. Vol. 190 Fol. 541
C.T. Vol. 3773 Fol. 273
Vol. 4604 Fol. 115
Bk. 1148 fol. 163
Bk. 1227 fol. 161

Ward of Siparia
County of St. Patrick
Cadastral Sheet G.13G. 63F
1/d, 2/c



Approved :

Jamal Sookoor
Director of Surveys
2003.10.13



b-a = 20° 31' 43.13
DRAIN RES. 1.25m WD.

SCALE 1:1000

Distances are in Metres

o denotes iron put except otherwise stated.

Bearings are based on Solar Observations.

Plan of 4 Parcels of land coloured pink in the Ward of Siparia
Containing together zero point six four five zero hectare.

Surveyed by me, with due authority, in October, 2001.

In accordance with Regulation 25(1) of the Land Surveyors' Regulations 1998,
I certify that this plan is correct.

Checked by MM: 25/9/03

Jamal Sookoor

Entered QMS 09.10.2013

Trinidad & Tobago Land Surveyor *Th. Sore* . . .2002

Original Rk 1227: 161

1B - Vol. 4604 fol. 121
Lilawatee Koopnarine

1C - Vol. 4604 fol. 123
Maniram Koopnarine

1D - Vol. 4604 fol. 125
Premdath Koopnarine

1E - Vol. 4604 fol. 127
Maniram Koopnarine

13 OCT 2003
Lands and
Surveys
Division

1279/158